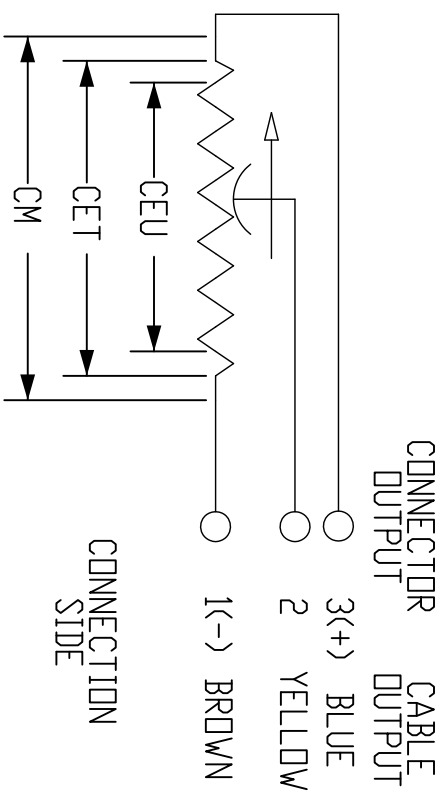
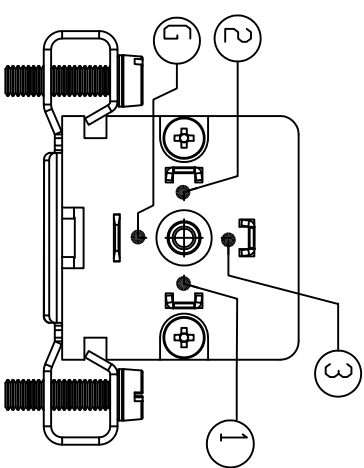
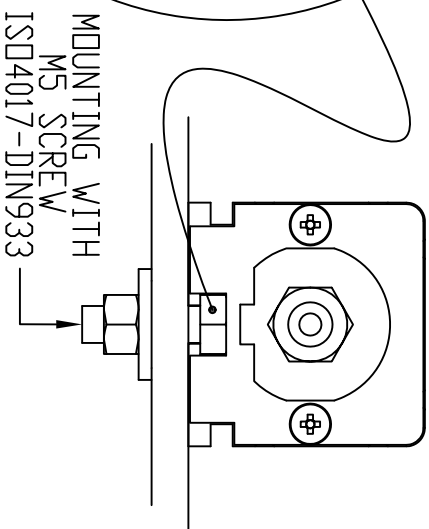
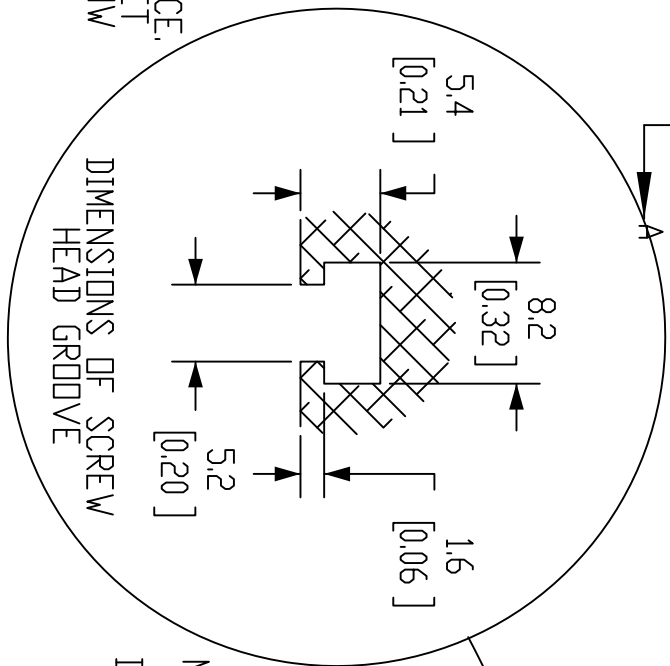
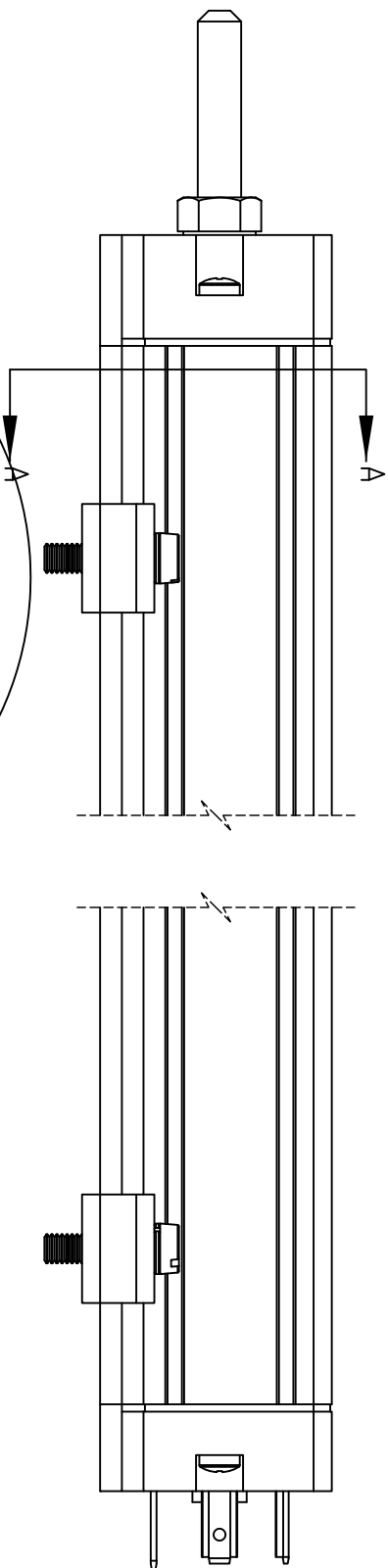
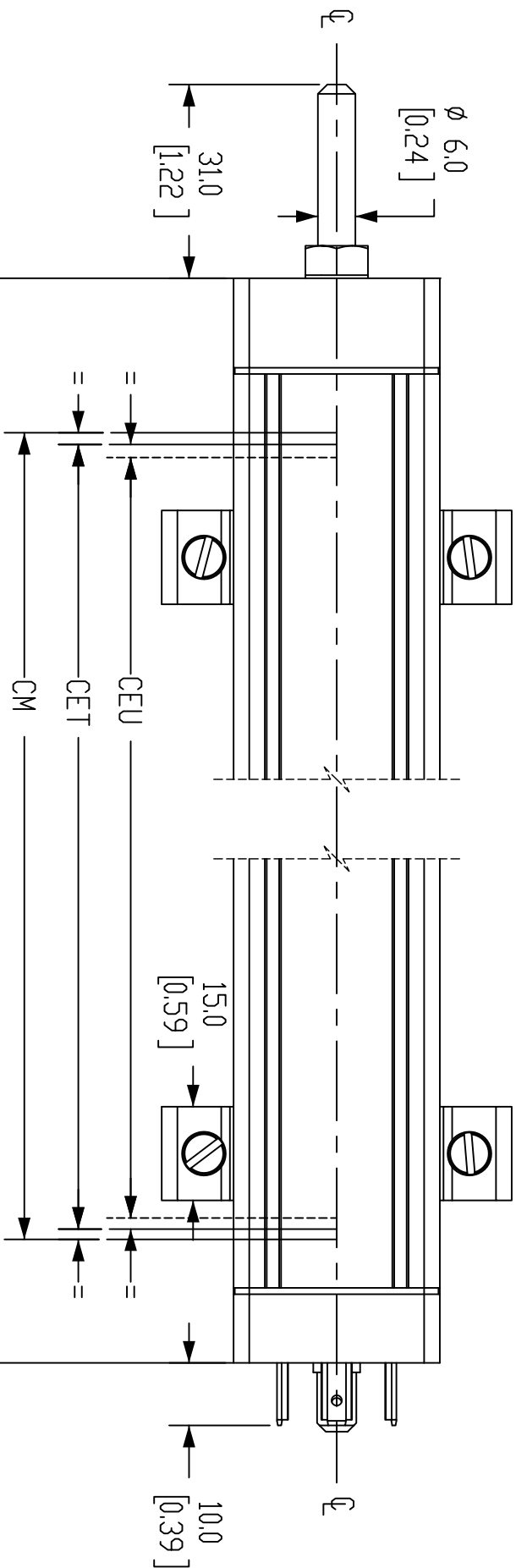
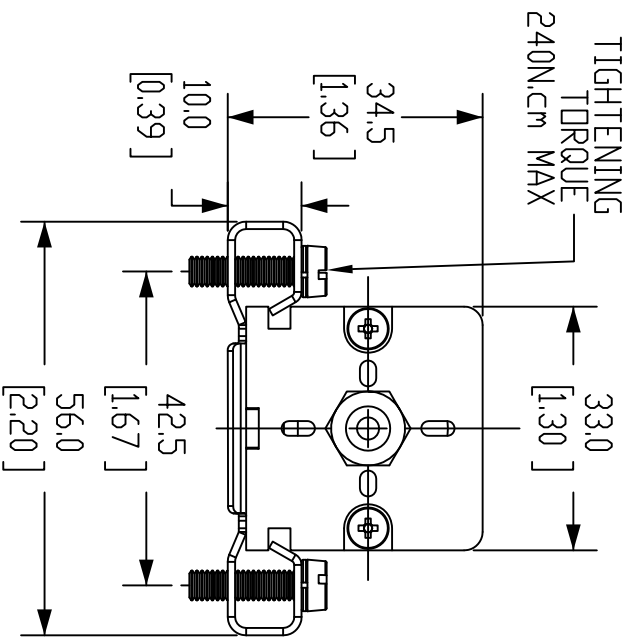


- NOTES:
1. DIMENSIONS CAN BE CHANGED BY MANUFACTURER WITHOUT NOTICE.
  2. DIMENSIONS DO NOT IMPLY TOLERANCE.

INSTALLATION INSTRUCTIONS :

MAKE THE SPECIFIED ELECTRICAL CONNECTIONS.  
DO NOT USE THE TRANSDUCER AS A VARIABLE RESISTANCE.  
WHEN CALIBRATING THE TRANSDUCER, BE CAREFUL TO SET  
THE STROKE SO THAT THE OUTPUT DOES NOT DROP BELOW  
1% OR RISE ABOVE 99% OF THE VOLTAGE LEVEL.



Units: mm [inches]

Scale: Full

POTENTIOMETER LINEAR POSITION

SENSOR, SLIDE, 130MM STROKE,  
6MM SHAFT DIA, 193MM BODY,  
CHANNEL MOUNT, 18MM