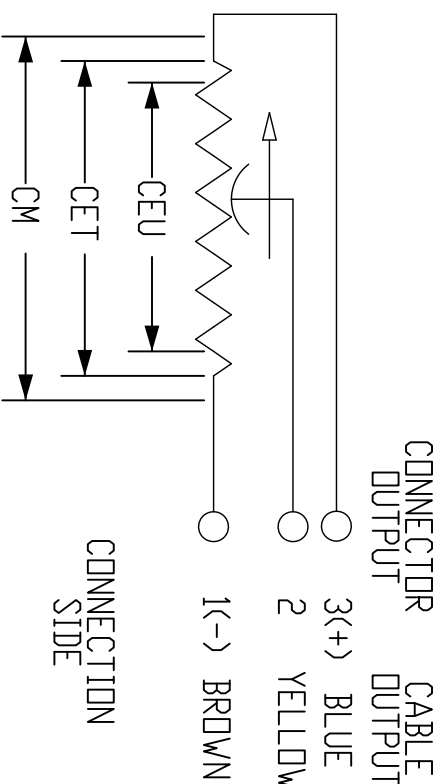
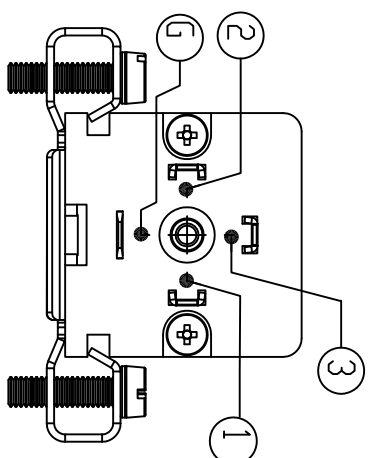
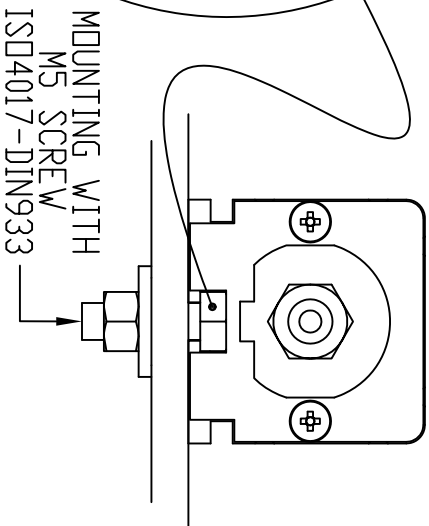
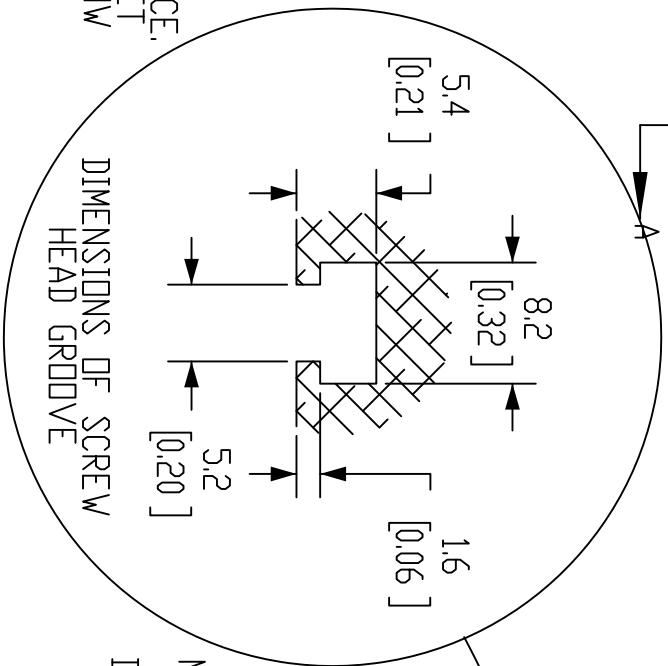
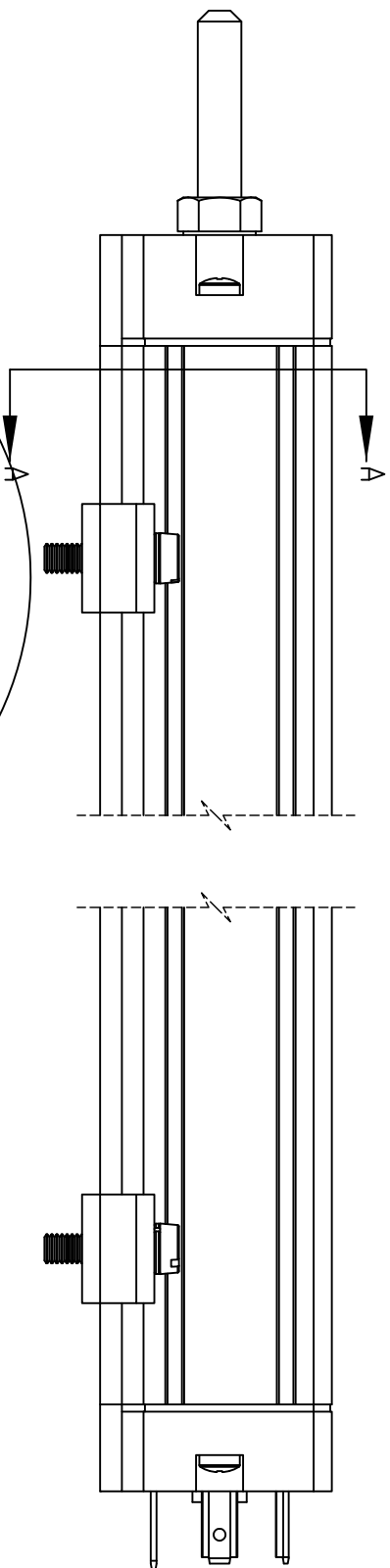
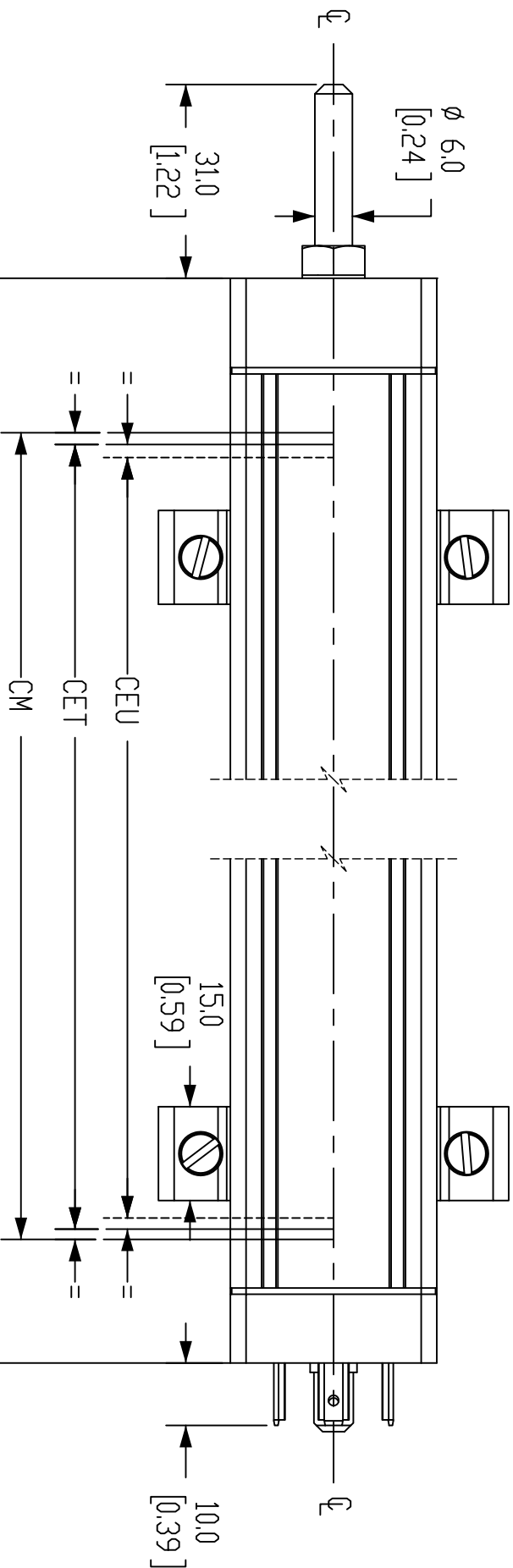
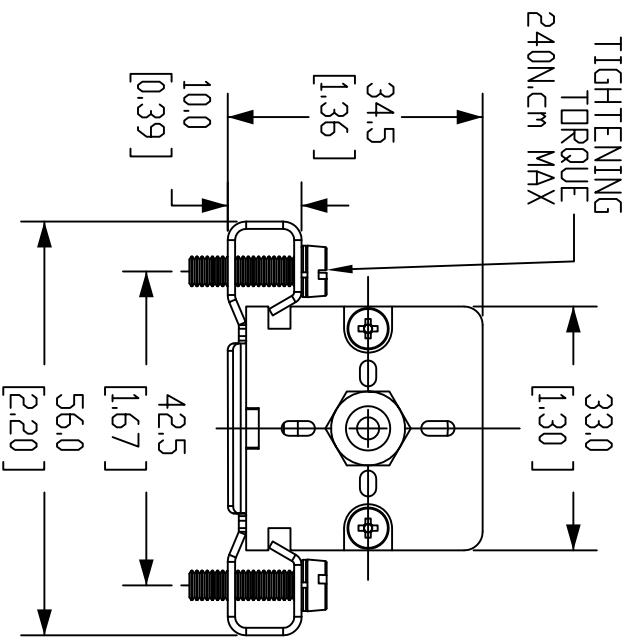


- NOTES:
1. DIMENSIONS CAN BE CHANGED BY MANUFACTURER WITHOUT NOTICE.
 2. DIMENSIONS DO NOT IMPLY TOLERANCE.

INSTALLATION INSTRUCTIONS :

MAKE THE SPECIFIED ELECTRICAL CONNECTIONS.
DO NOT USE THE TRANSDUCER AS A VARIABLE RESISTANCE.
WHEN CALIBRATING THE TRANSDUCER, BE CAREFUL TO SET
THE STROKE SO THAT THE OUTPUT DOES NOT DROP BELOW
1% OR RISE ABOVE 99% OF THE VOLTAGE LEVEL.



Units: mm [inches]

Scale: Full

POTENTIOMETER LINEAR POSITION

SENSOR, SLIDE, 175MM STROKE,

6MM SHAFT DIA, 238MM BODY,

CHANNEL MOUNT, 18MM

LT-M-0175-S-L

AUTOMATIONDIRECT