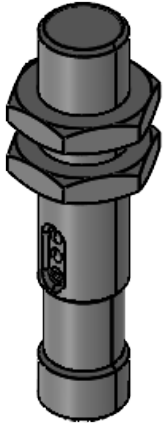
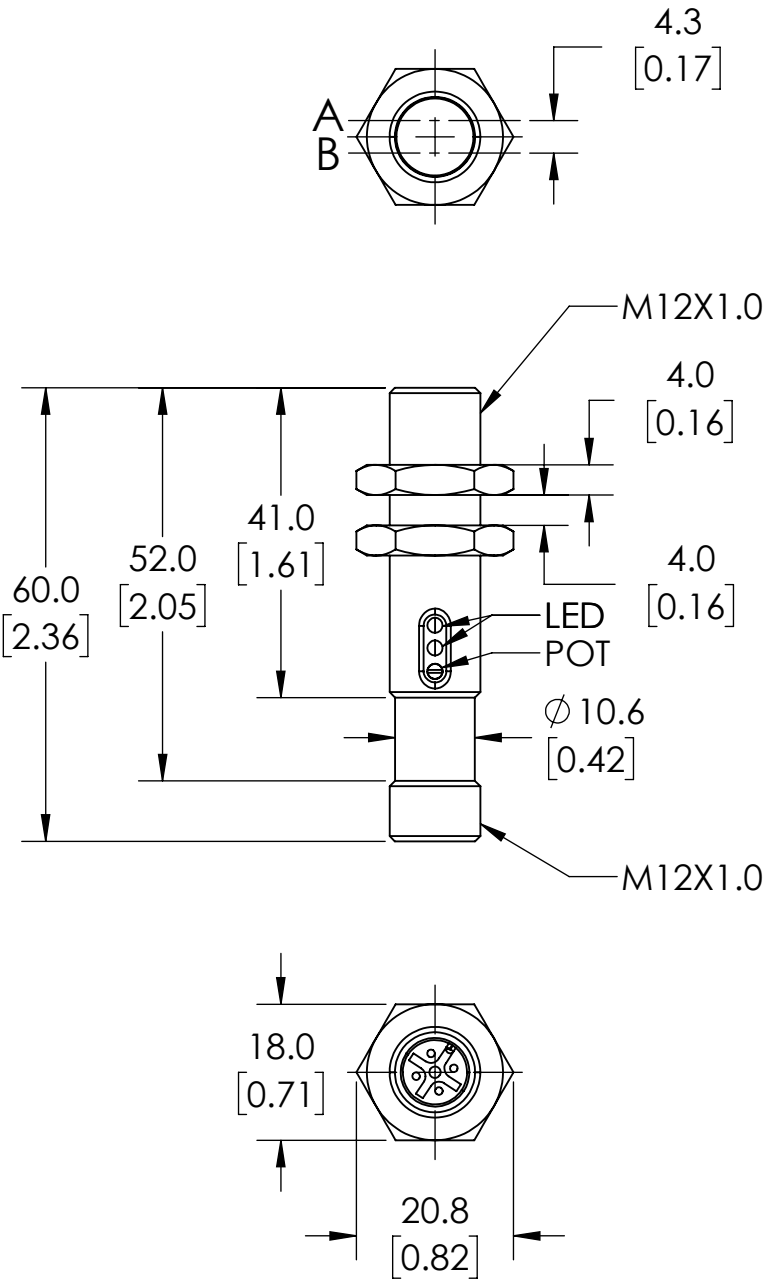



A = EMITTER AXIS
B = RECEIVER AXIS



ISOMETRIC VIEW

NOTES:

- 1. DIMENSIONS CAN BE CHANGED BY MANUFACTURER WITHOUT NOTICE.
- 2. DIMENSIONS DO NOT IMPLY TOLERANCE.

LTR-M12MA-PMS-101
Units: mm [inches] Scale: Full CONTRINEX PHOTOELECTRIC SENSOR, TUBULAR, THREADED, DIFFUSE, VISIBLE RED LIGHT EMISSION, 5-800MM SENSING DISTANCE, COMPLEMENTARY LIGHT-ON/DARK-ON, NPN, POTENTIOMETER, 1.5 KHZ SWITCHING FREQUENCY, CHROME-PLATED BRASS HOUSING, 4-PIN M12 QUICK-DISCONNECT.
 AUTOMATIONDIRECT .com