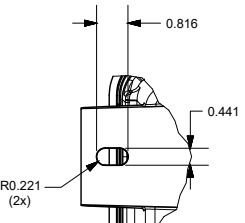
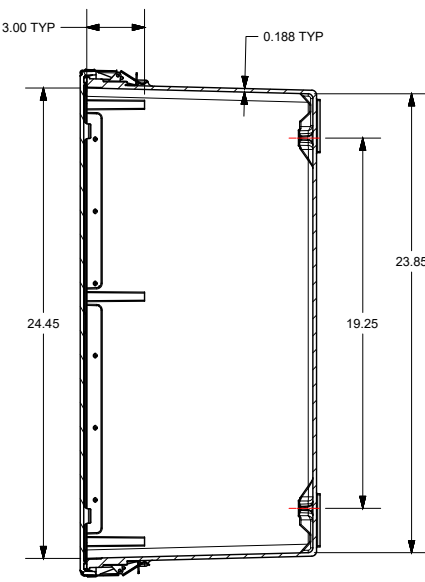
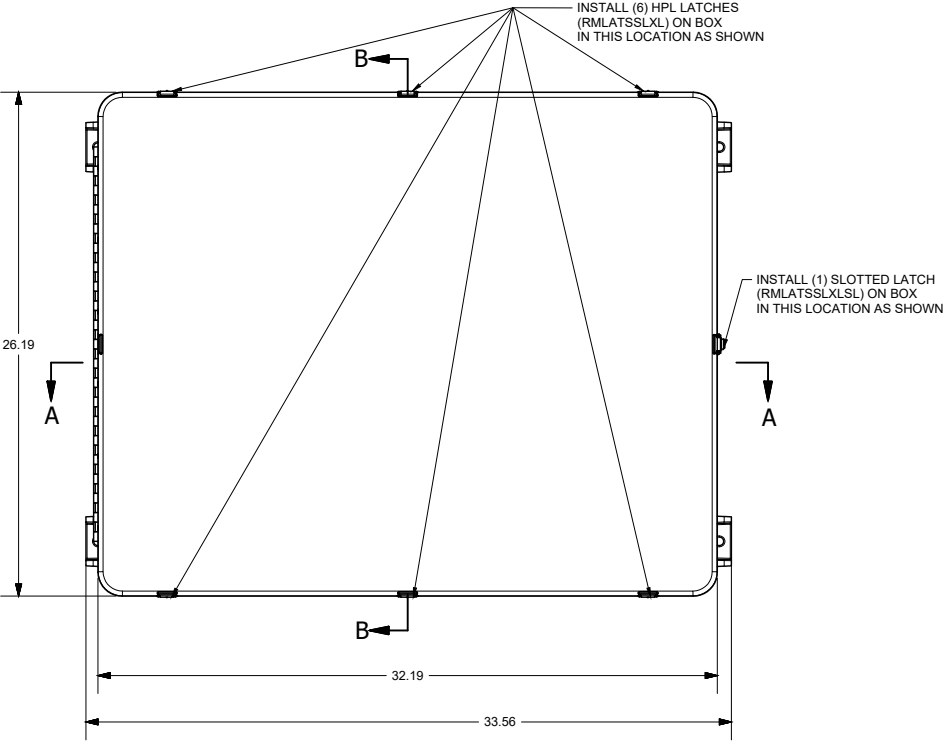
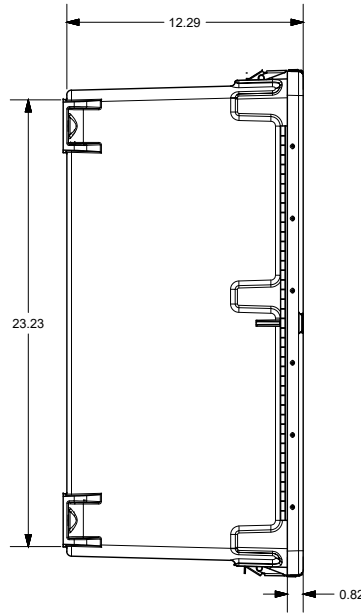
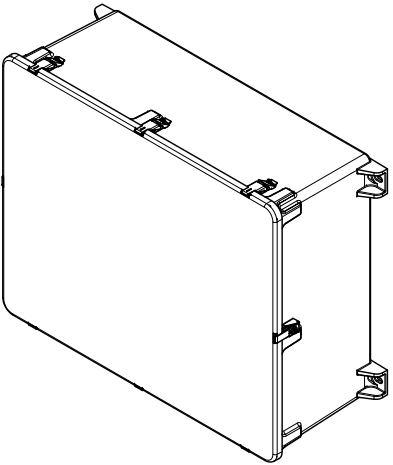


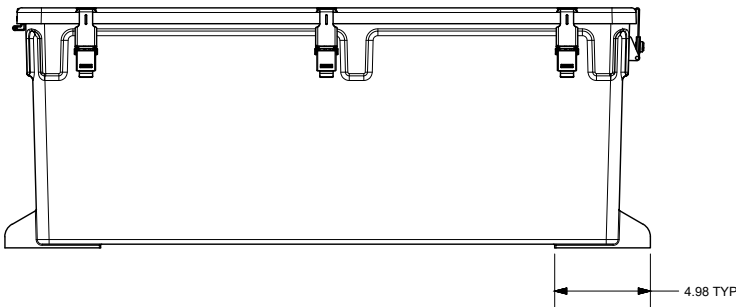
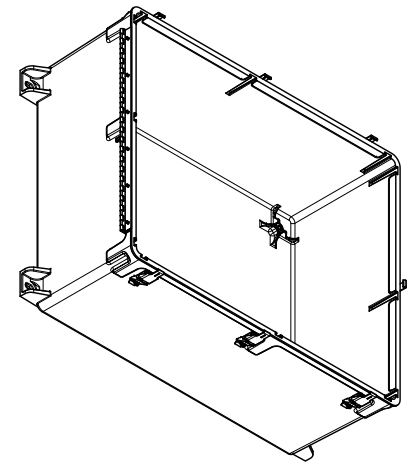
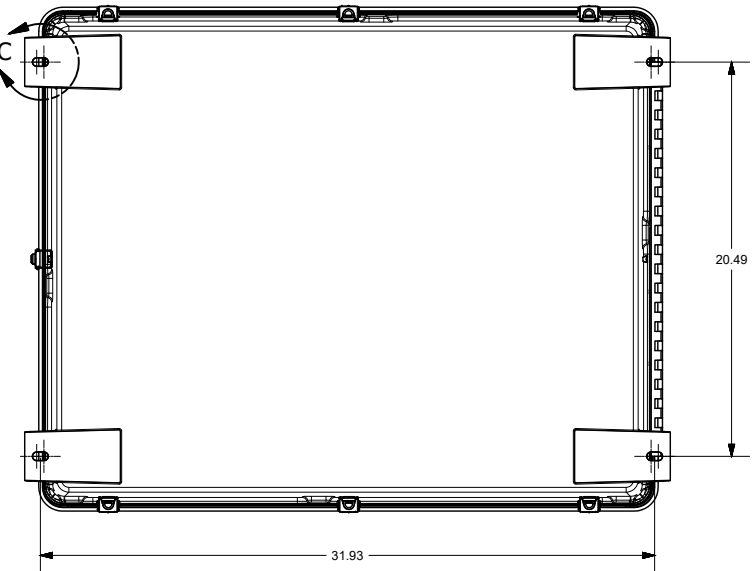
SECTION A-A



DETAIL C  
(4x)




SECTION B-B



THIS DRAWING IS THE SOLE AND EXCLUSIVE PROPERTY OF ROBROY ENCLOSURES. NO PART OF THIS DRAWING MAY BE REPRODUCED, DISTRIBUTED, OR PUBLICALLY DISPLAYED IN ANY FORM OR BY ANY MEANS WITHOUT THE EXPRESS WRITTEN PERMISSION OF ROBROY ENCLOSURES. ALL RIGHTS RESERVED. UNDER THE COPYRIGHT LAWS. COPYRIGHT © 2019 ROBROY ENCLOSURES

**SPECIAL REQUIREMENTS**

- ENGINEERING:**  
1. CONTACT ENGINEERING FOR FIRST RUN INSPECTION
- ASSEMBLY:**  
1. (1) ACCESSORY KIT (FE4PKBP) SHALL BE PACKAGED LOOSELY INSIDE ENCLOSURE
- HARDWARE INCLUDED:**  
(4) 3/8-16 x 1/2 HEX HEAD CAP SCREW T18  
(4) 3/8 FLAT WASHER T18-8 SS
2. INSTALL (6) HPL LATCHES (RMLATSSLXL) AS SHOWN  
3. INSTALL (1) SLOTTED LATCH (RMLATSSLXL) AS SHOWN  
4. PACKAGE ENCLOSURE IN CARTON (RMCTN302412)  
- USE (4) 12" STYROFOAM POSTS (RMCTN3X1.5X12)

NEMA 250: TYPE 1, 3, 3R, 4, 4X, 12, 13 IEC 60529: IP66				STANDARD P/N: M2430HPL		ALL DIMENSIONS ARE IN INCHES UNLESS OTHERWISE SPECIFIED		TOLERANCES UNLESS SPECIFIED		.XX ± 0.03		XXX ± 0.010	
COLOR: GLACIER GRAY (WPR3013) COLOR STANDARD: PANTONE 428 C				CUSTOMER DWG: N/A									
MATERIAL: FIBERGLASS REINFORCED POLYESTER (FRP)						<div><div> <b>AttaBox</b></div><div>A ROBROY ENCLOSURES™ BRAND</div></div> <div><div>Robroy Enclosures</div><div>500 Maple Street</div><div>Belding, Michigan 48805</div><div>Phone: 616-794-0700</div><div>Fax: 616-749-3376</div></div>							
REVISION HISTORY													
REV	DESCRIPTION			DATE	ENG								
-	-			-	-								
-	-			-	-								
-	-			-	-								
-	-			-	-								
-	-			-	-								
-	-			-	-								
-	-			-	-								
-	-			-	-								
-	-			-	-								
-	-			-	-								
-	-			-	-								
DRAWN BY AA		DATE 03/26/19		CUSTOMER									DWG M2430HPLSL
SCALE DO NOT SCALE		DESCRIPTION STANDARD ENCLOSURE				PART NUMBER ATM2430HPLSL							

**AttaBox**  
A ROBROY ENCLOSURES™ BRAND

**Robroy Enclosures**  
500 Maple Street  
Belding, Michigan 48809  
Phone: 616-794-0700  
Fax: 616-749-3378