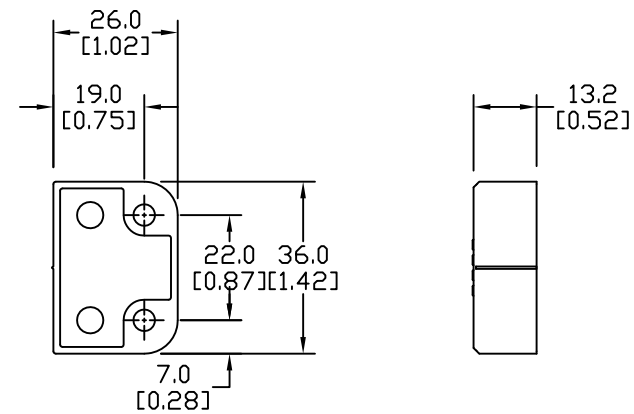


SWITCH



ACTUATOR

NOTES:

1. DIMENSIONS CAN BE CHANGED BY MANUFACTURER WITHOUT NOTICE.
2. DIMENSIONS DO NOT IMPLY TOLERANCE.

MPR-114016
Units: mm [inch]
Full Scale
MAGNETIC ACTUATION, (2) N.C. SAFETY CONTACT(S), (1) N.O. MONITORING CONTACT(S), PLASTIC HOUSING, 36 X 26 MM, 9.8IN/250MM CABLE LENGTH, 8-PIN M12 QUICK-DISCONNECT.
AUTOMATIONDIRECT .com