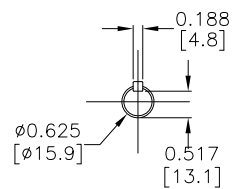


#### OUTPUT SHAFT DETAIL



#### NOTES:

1. DIMENSIONS CAN BE CHANGED BY MANUFACTURER WITHOUT NOTICE.
2. DIMENSIONS DO NOT IMPLY TOLERANCE.

MTRP-1P5-3BD18
Units: inches [mm]
Scale: Full
IRONHORSE PREMIUM EFFICIENCY AC MOTOR, GENERAL PURPOSE, 1.5HP, 3-PH, 208-230/460V, 1800 RPM, TEFC, 56C FRAME, ROLLED STEEL
<b>AUTOMATIONDIRECT</b> <sup>com</sup>