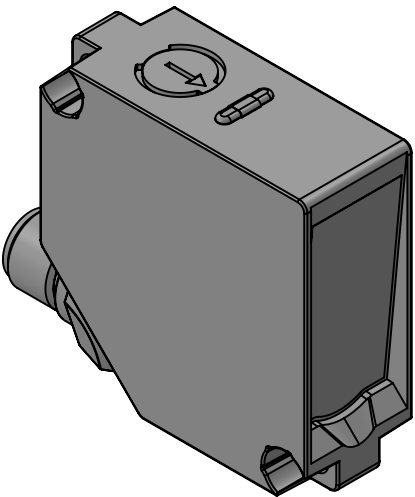
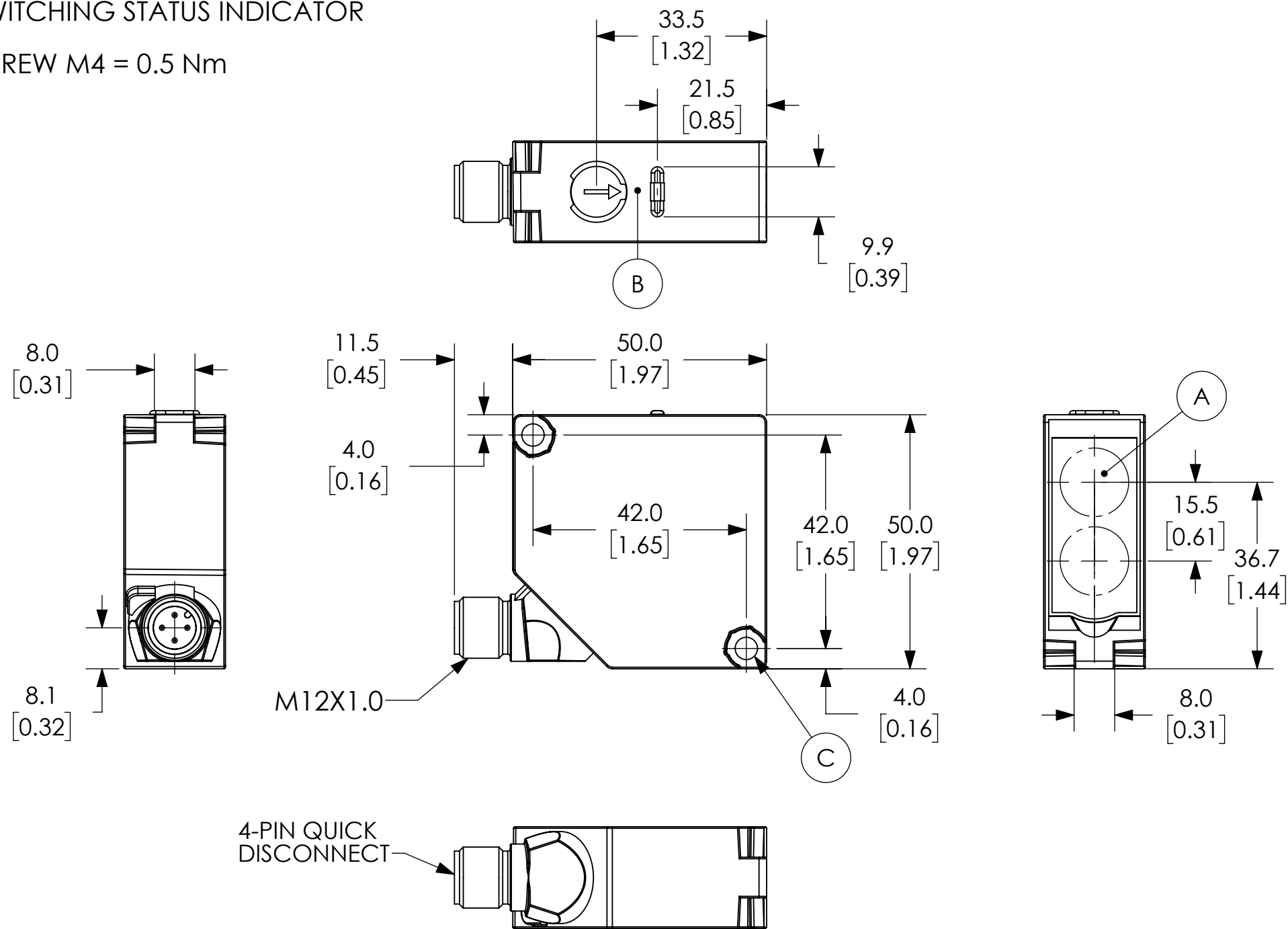


- A.) RECIEVER DIODE
- B.) ALIGNMENT AID/SWITCHING STATUS INDICATOR
- C.) WRENCH SIZE 7, SCREW M4 = 0.5 Nm



NOTES:

- 1. DIMENSIONS CAN BE CHANGED BY MANUFACTURER WITHOUT NOTICE.
- 2. DIMENSIONS DO NOT IMPLY TOLERANCE.

OPT2131
Units: mm [inches] Scale: Full
RECTANGULAR PHOTO SENSOR: 0-20M RANGE, THROUGH-BEAM RECEIVER
AUTOMATIONDIRECT .com