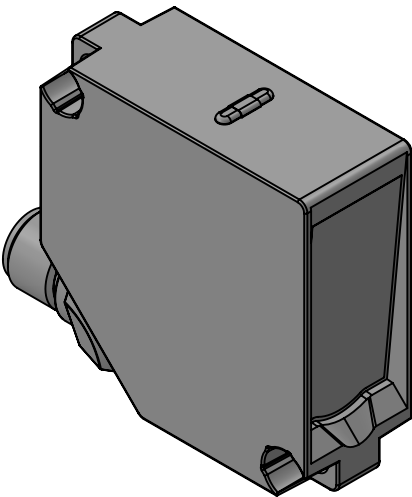
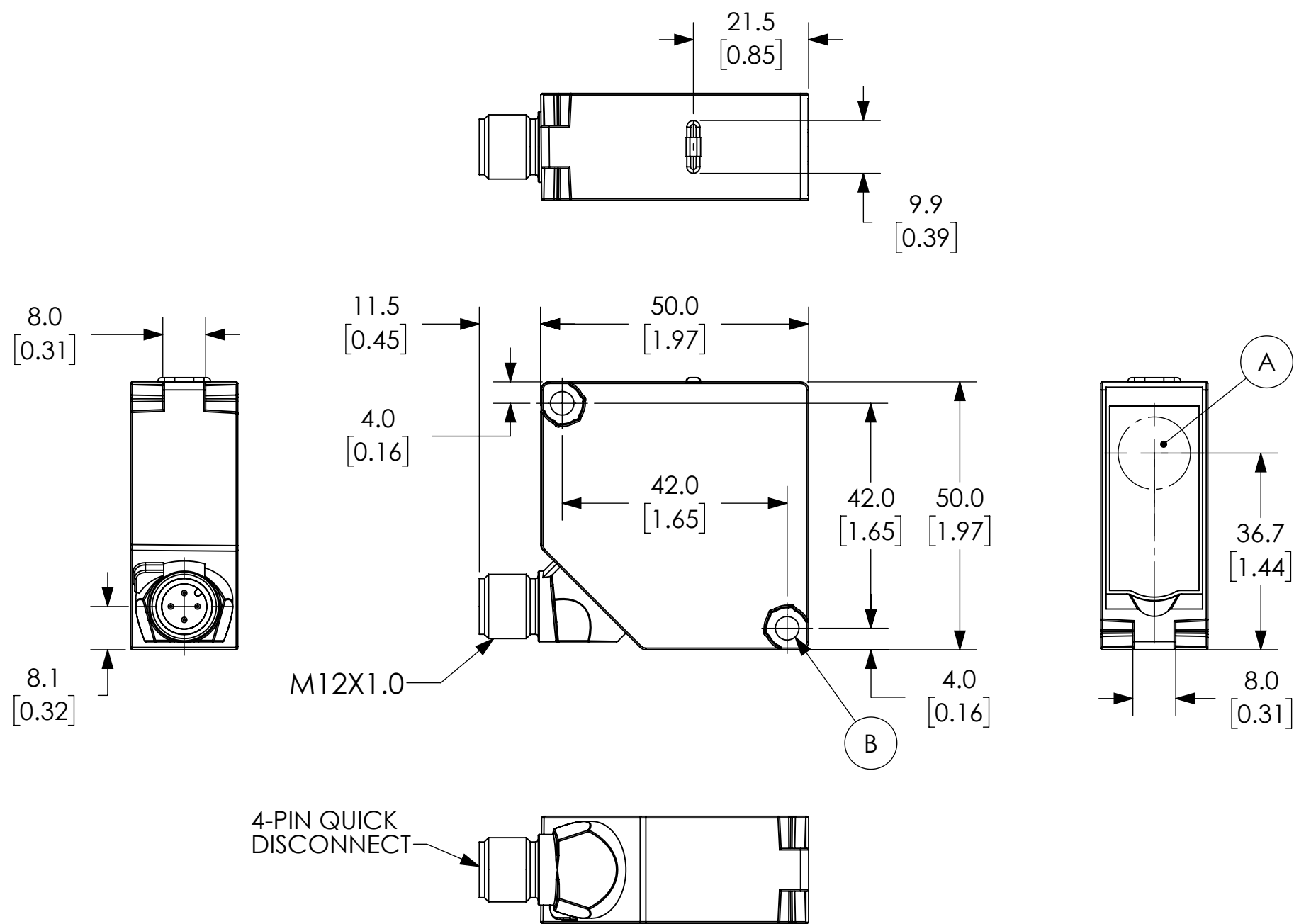


- A.) TRANSMITTER DIODE
- B.) WRENCH SIZE 7, SCREW M4 = 0.5 Nm



- NOTES:
1. DIMENSIONS CAN BE CHANGED BY MANUFACTURER WITHOUT NOTICE.
 2. DIMENSIONS DO NOT IMPLY TOLERANCE.

OPT2132
Units: mm [inches] Scale: Full RECTANGULAR PHOTO SENSOR: 0-20M RANGE, THROUGH-BEAM EMITTER
