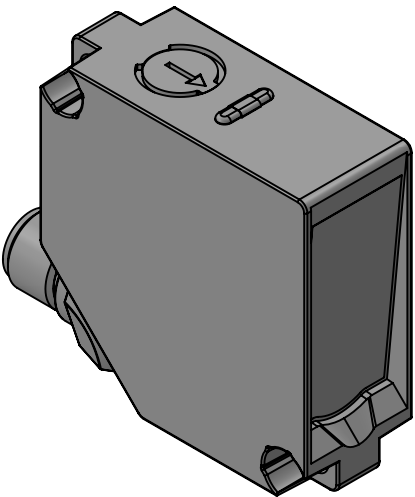
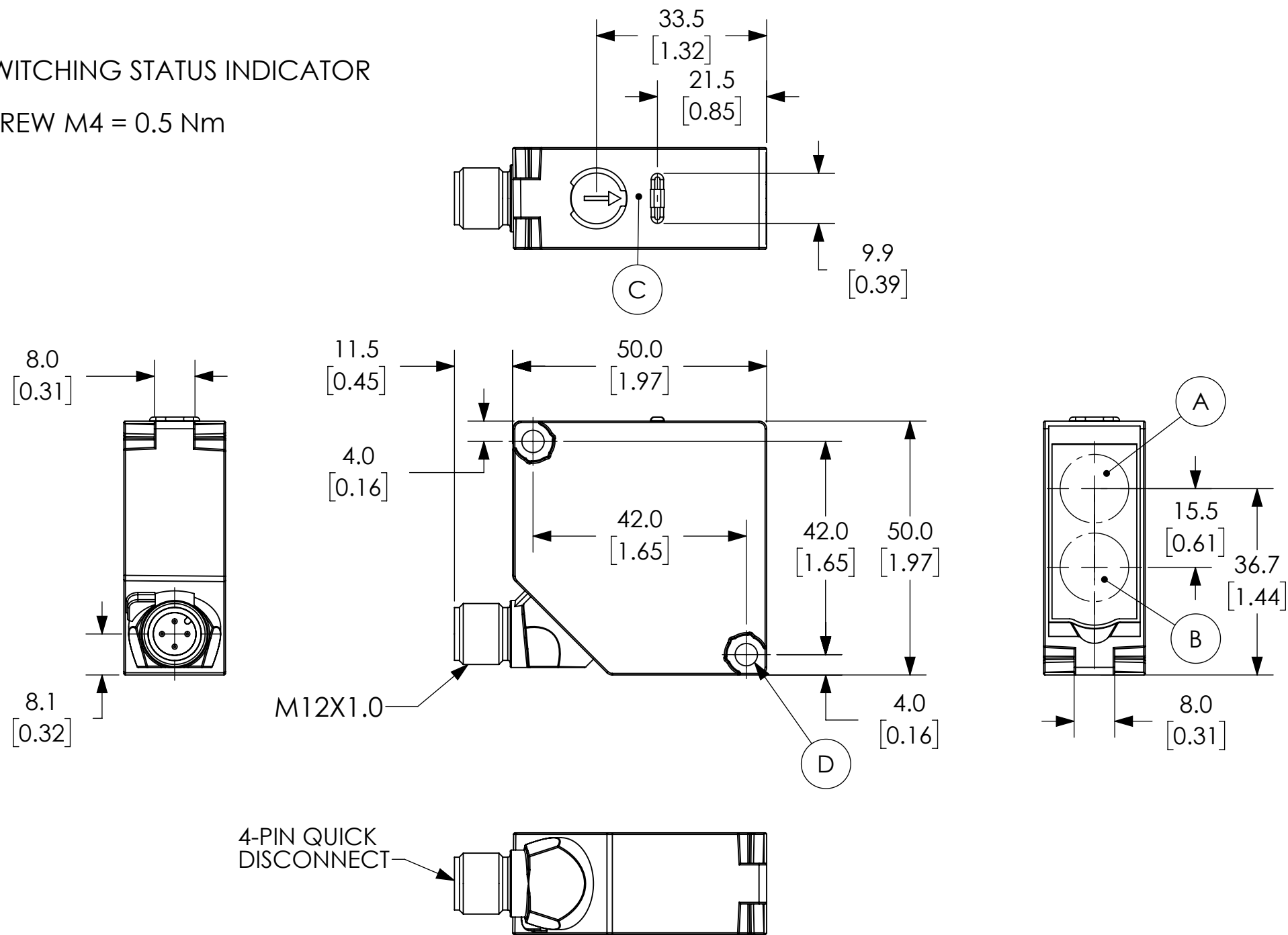


- A.) TRANSMITTER DIODE
- B.) RECIEVER DIODE
- C.) ALIGNMENT AID/SWITCHING STATUS INDICATOR
- D.) WRENCH SIZE 7, SCREW M4 = 0.5 Nm



NOTES:

- 1. DIMENSIONS CAN BE CHANGED BY MANUFACTURER WITHOUT NOTICE.
- 2. DIMENSIONS DO NOT IMPLY TOLERANCE.

OPT2135
Units: mm [inches] Scale: Full RECTANGULAR PHOTO SENSOR, 0-11M RANGE, RETROREFLECTIVE
AUTOMATIONDIRECT .com