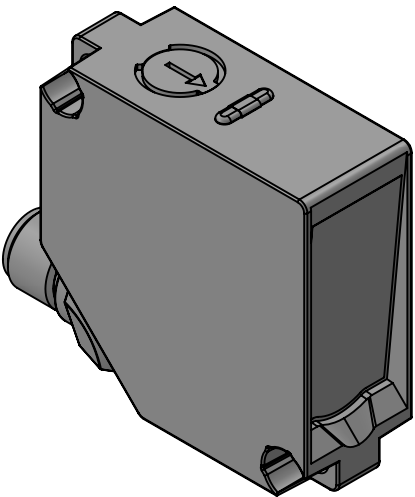
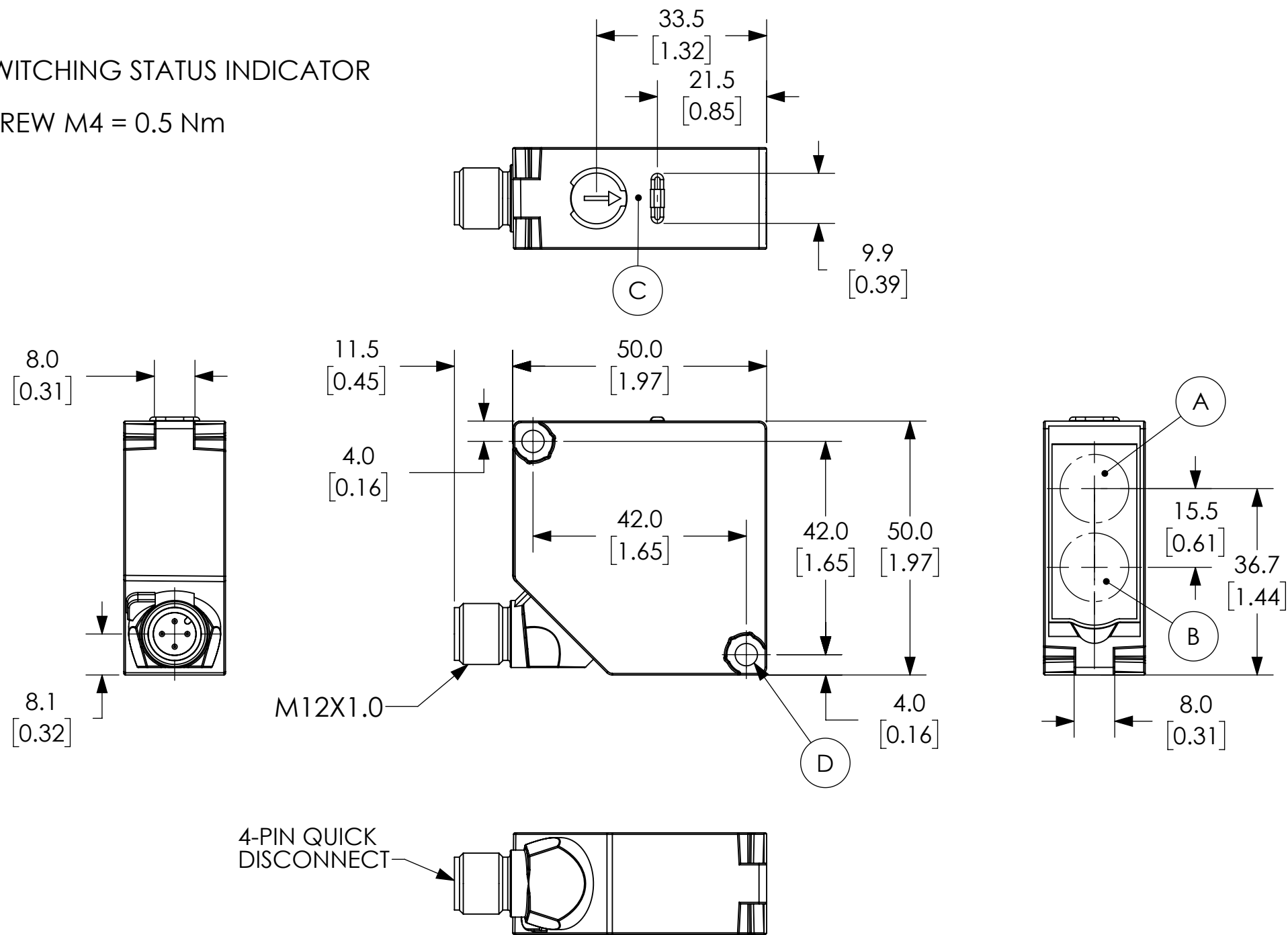


- A.) TRANSMITTER DIODE
- B.) RECIEVER DIODE
- C.) ALIGNMENT AID/SWITCHING STATUS INDICATOR
- D.) WRENCH SIZE 7, SCREW M4 = 0.5 Nm



NOTES:

1. DIMENSIONS CAN BE CHANGED BY MANUFACTURER WITHOUT NOTICE.
2. DIMENSIONS DO NOT IMPLY TOLERANCE.

OPT2147
Units: mm [inches] Scale: Full
RECTANGULAR PHOTO SENSOR, 0-200MM RANGE, DIFFUSE W/SUPPRESSION
AUTOMATIONDIRECT.com