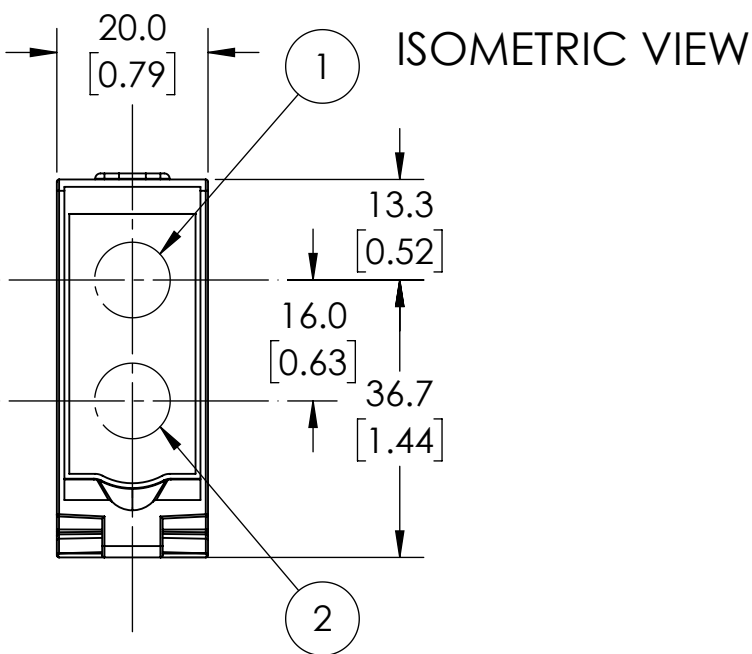
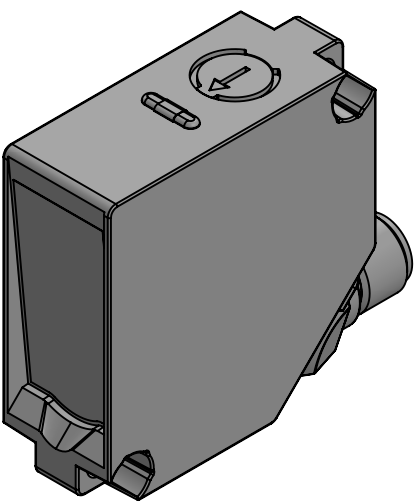
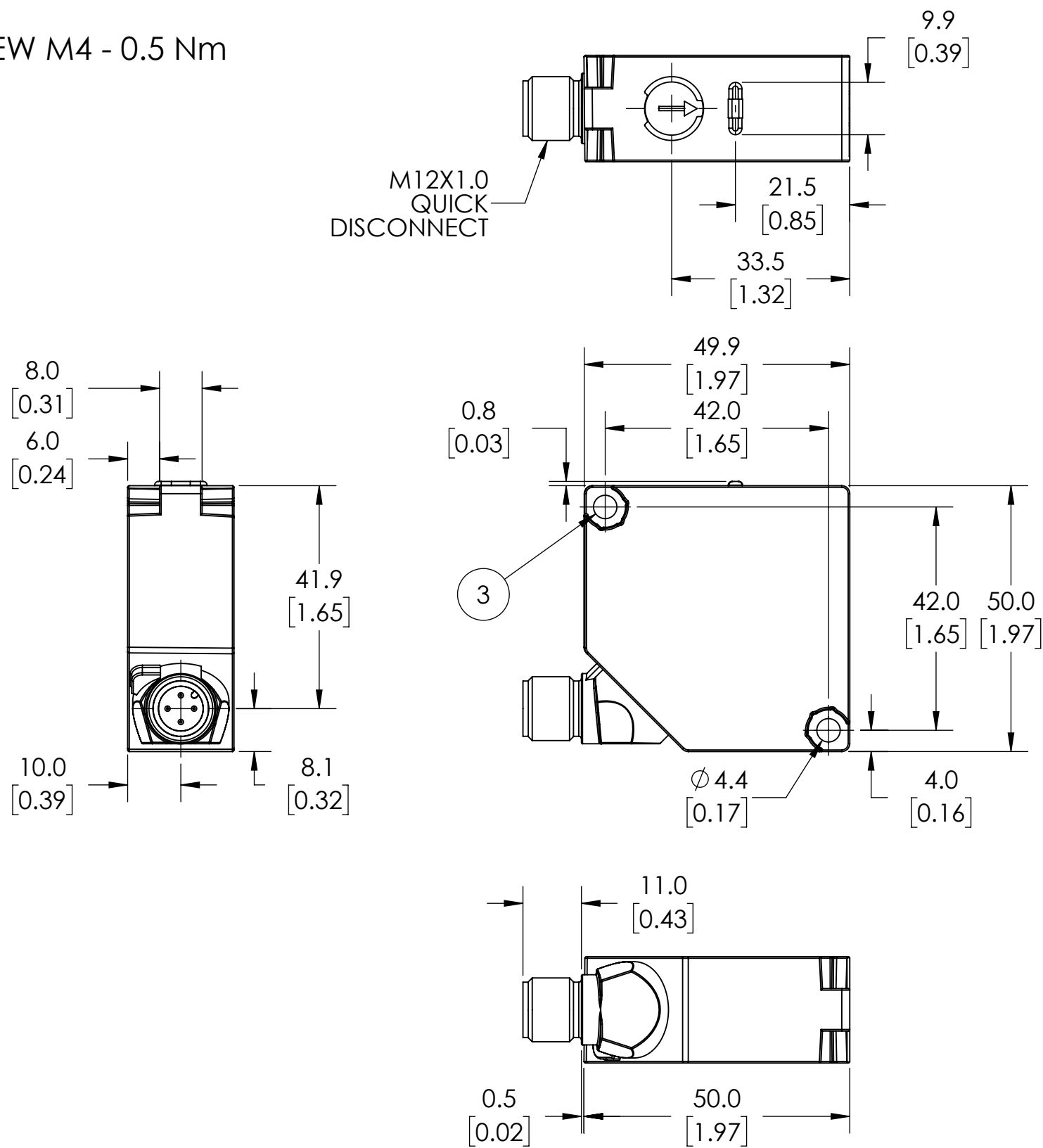


- 1 = TRANSMITTER DIODE  
2 = RECEIVER DIODE  
3 = WRENCH SIZE 7, SCREW M4 - 0.5 Nm



NOTES:

1. DIMENSIONS CAN BE CHANGED BY MANUFACTURER WITHOUT NOTICE.
2. DIMENSIONS DO NOT IMPLY TOLERANCE.

OPT2158
Units: mm [inches] Scale: Full
WENGLOR PHOTOELECTRIC LASER SENSOR, DIFFUSE WITH BACKGROUND SUPPRESSION, 50 X 50 X 20MM, CLASS 1 LASER LIGHT EMISSION, 0- 300MM SENSING DISTANCE, 15-30 VDC OPERATING VOLTAGE, NPN, IO-LINK COMPATIBLE, 4-PIN M12 QUICK-DISCONNECT
<b>AUTOMATIONDIRECT</b> .com