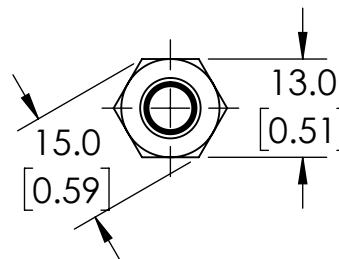


ISOMETRIC VIEW



NOTES:

1. DIMENSIONS CAN BE CHANGED BY MANUFACTURER WITHOUT NOTICE.
2. DIMENSIONS DO NOT IMPLY TOLERANCE.

PEW2-AP-3F

Units: mm [inches]

Scale: Full

PROSENSE INDUCTIVE PROXIMITY SENSOR,
TUBULAR, 8MM DIAMETER X 45MM BODY,
STAINLESS STEEL HOUSING, PNP, N.O. OUTPUT,
3MM SENSING DISTANCE, SEMI-FLUSH, 250 HZ
SWITCHING FREQUENCY, IP65 IP66 IP67 IP68
IP69K, 3-PIN M8 QUICK-DISCONNECT

AUTOMATIONDIRECT.com