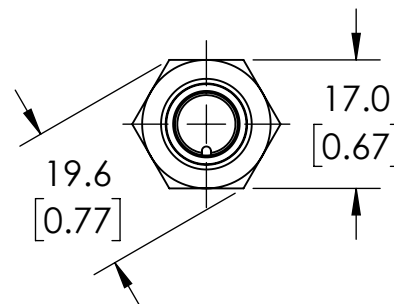


ISOMETRIC VIEW



#### NOTES:

1. DIMENSIONS CAN BE CHANGED BY MANUFACTURER WITHOUT NOTICE.
2. DIMENSIONS DO NOT IMPLY TOLERANCE.

PMW2-AP-3H

Units: mm [inches]

Scale: Full

PROSENSE INDUCTIVE PROXIMITY SENSOR,  
TUBULAR, 12MM DIAMETER X 45MM BODY,  
STAINLESS STEEL HOUSING, PNP, N.O. OUTPUT,  
4MM SENSING DISTANCE, FLUSH, 100 HZ  
SWITCHING FREQUENCY, IP65 IP66 IP67 IP68  
IP69K, 4-PIN M12 QUICK-DISCONNECT

**AUTOMATIONDIRECT**.com