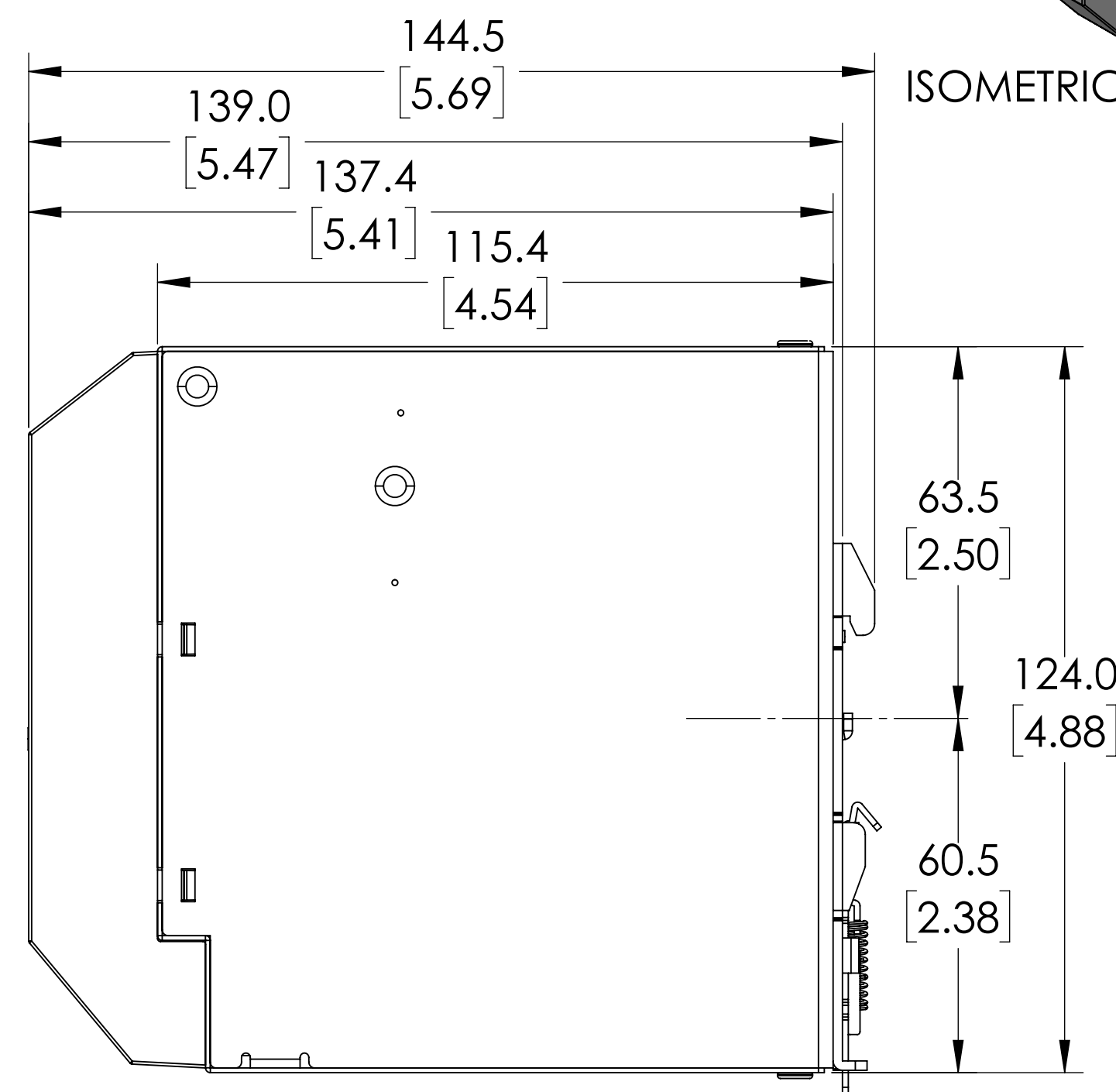
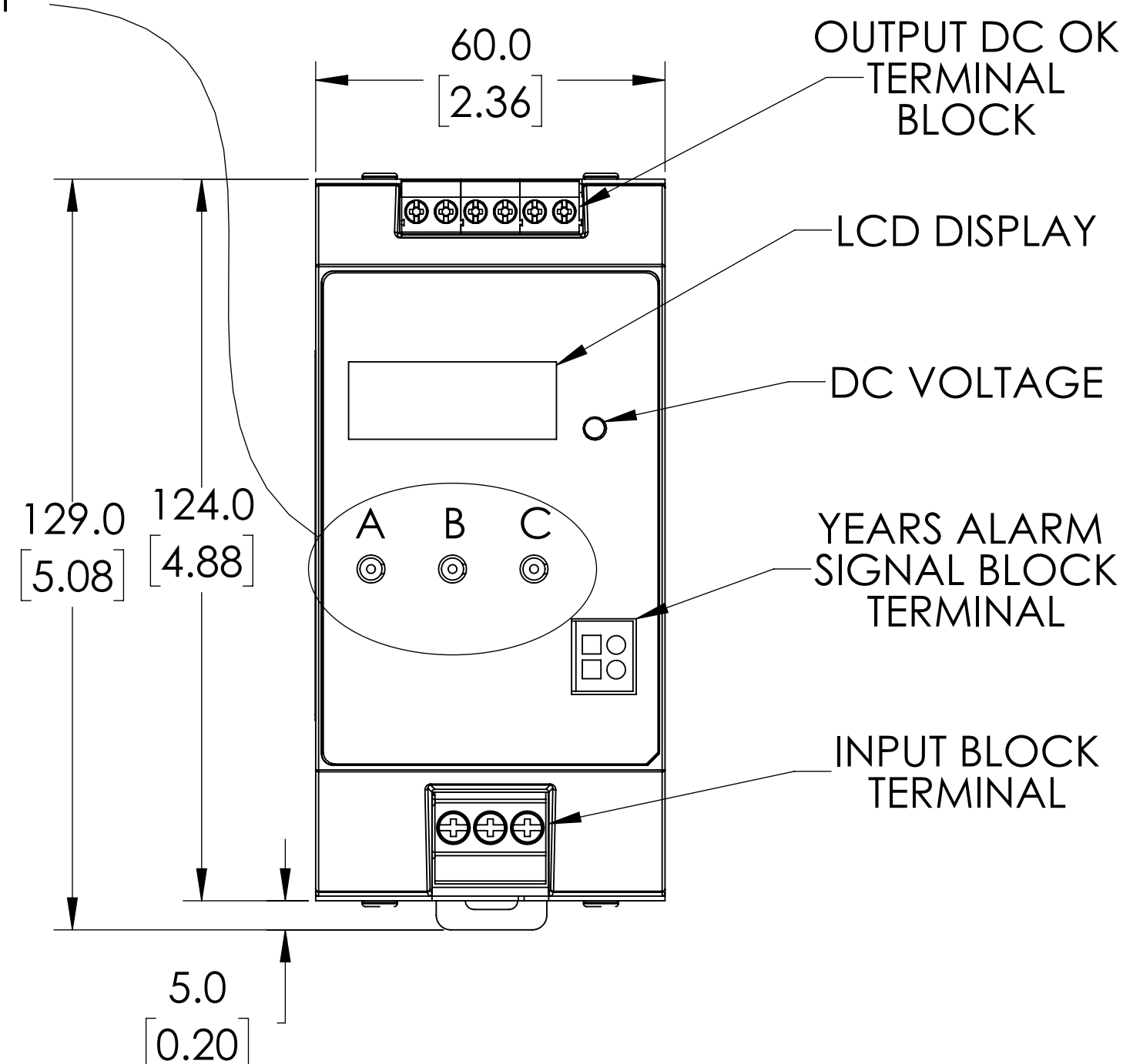


ISOMETRIC VIEW



FRONT FACEPLATE:

- A.) BACK KEY
- B.) FORWARD KEY
- C.) MODE KEY



NOTES:

1. DIMENSIONS CAN BE CHANGED BY MANUFACTURER WITHOUT NOTICE.
2. DIMENSIONS DO NOT IMPLY TOLERANCE.

PSD24-240-L

Units: mm [inches]
 Scale: Full

POWER SUPPLY, 24-28 VDC OUTPUT,
 10A, 240W, 120/240 VAC OR 110-300
 VDC NOMINAL INPUT, 1 PHASE