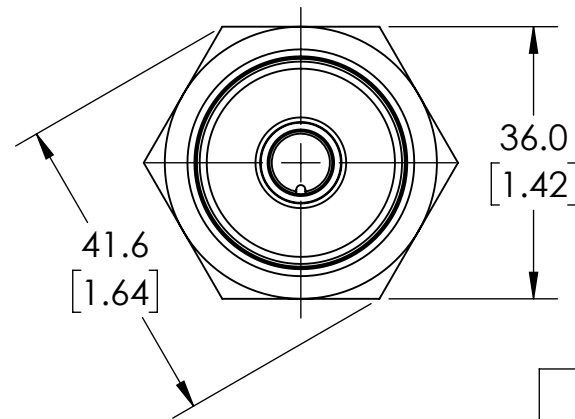


ISOMETRIC VIEW



NOTES:

1. DIMENSIONS CAN BE CHANGED BY MANUFACTURER WITHOUT NOTICE.
2. DIMENSIONS DO NOT IMPLY TOLERANCE.

PTW2-AP-3H

Units: mm [inches]

Scale: Full

PROSENSE INDUCTIVE PROXIMITY SENSOR,
TUBULAR, 30MM DIAMETER X 50MM BODY,
STAINLESS STEEL HOUSING, PNP, N.O. OUTPUT,
15MM SENSING DISTANCE, FLUSH, 50 HZ
SWITCHING FREQUENCY, IP65 IP66 IP67 IP68
IP69K, 4-PIN M12 QUICK-DISCONNECT

AUTOMATIONDIRECT.com