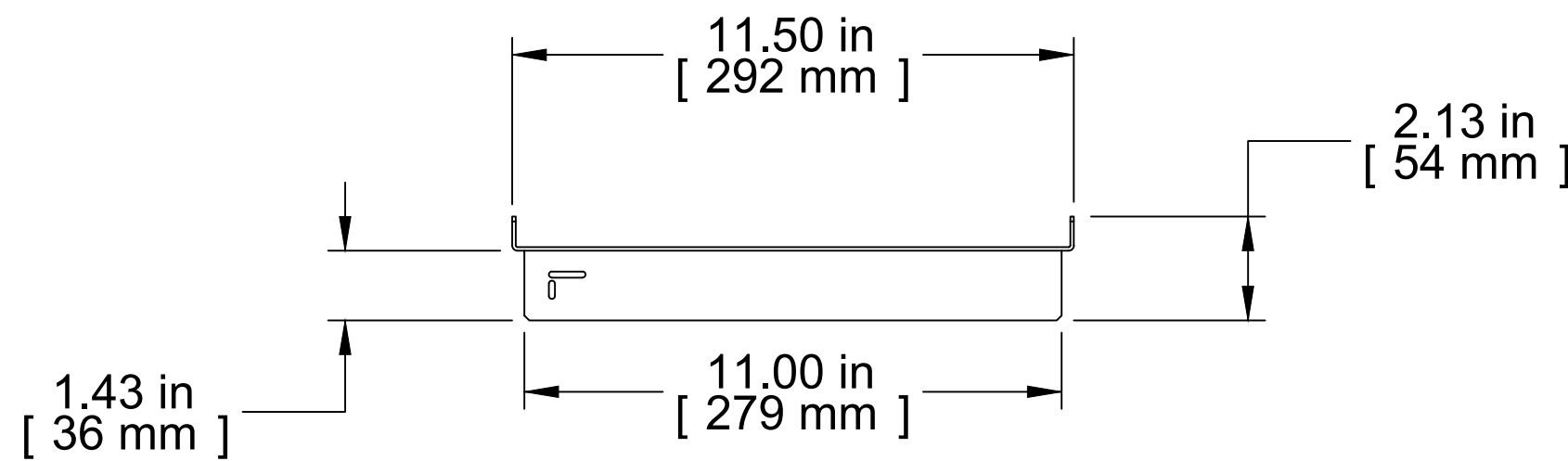
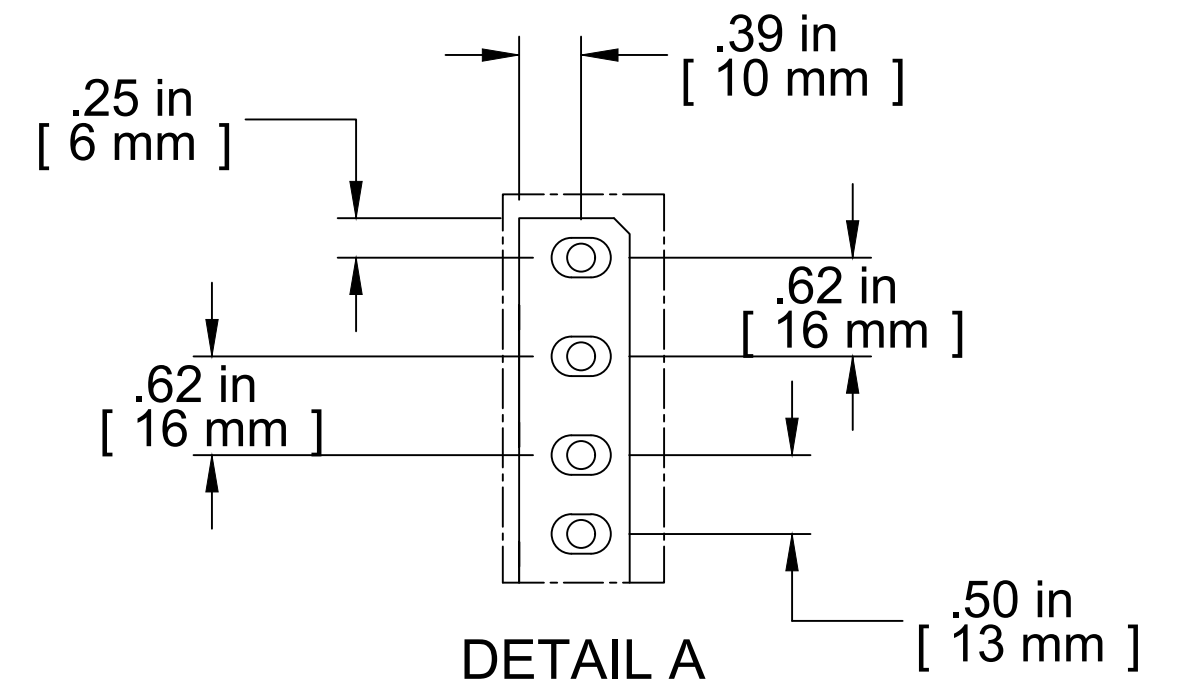


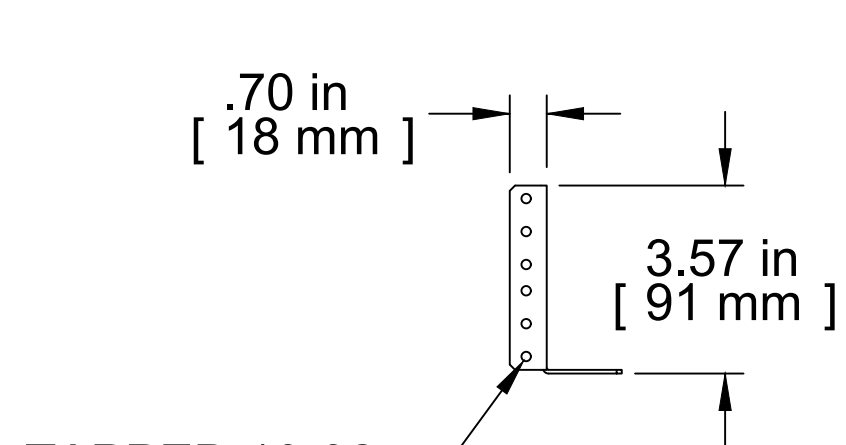
**ISOMETRIC**  
Sold with 2 Right and 2 Left



**TOP VIEW**

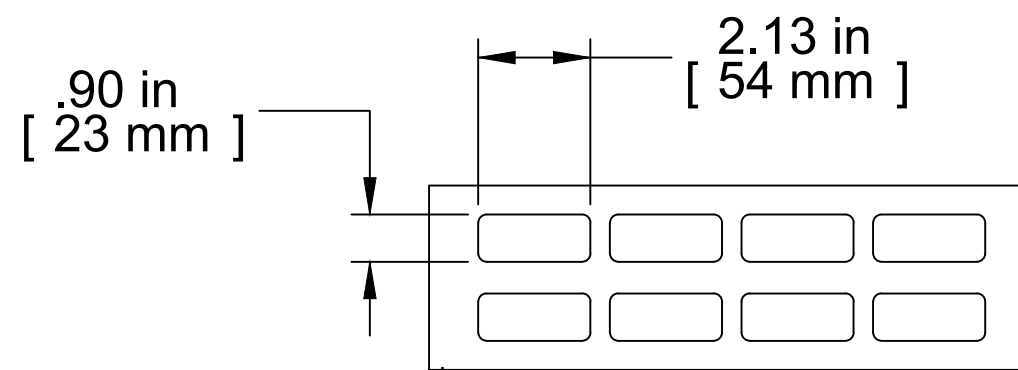


**DETAIL A**

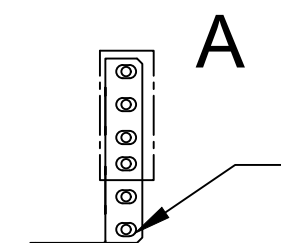


TAPPED 10-32

**L.S. VIEW**


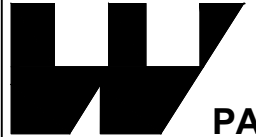


**FRONT VIEW**



**R.S. VIEW**

6X  
Ø 0.250 X 0.375  
OBROUND

PART NUMBERS	
RDAB2U26	PAINTED BLACK SMOOTH
NOTES	
Sold in Pairs of 2 Right and 2 Left	
10-32 x 5/8 Pan Head Screw (Qty. 8) Includ.	
See Hammond Website for More Information	
Français	
Pour tous les détails sur nos produits, svp veuillez consulter notre site <a href="http://www.hammondmfg.com">www.hammondmfg.com</a>	
Data subject to change without notice. Isometric drawing not to scale. Les données sont sujettes à changement sans préavis.	
	
	
<a href="http://www.hammondmfg.com">www.hammondmfg.com</a>	
PART NO.	RDAB2U26

