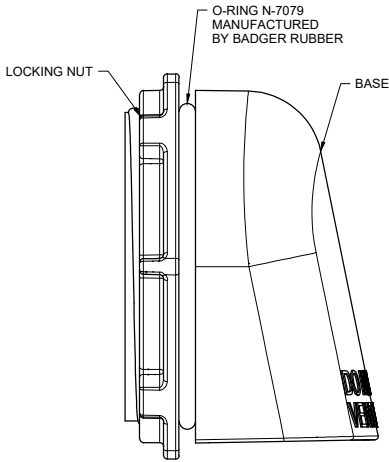
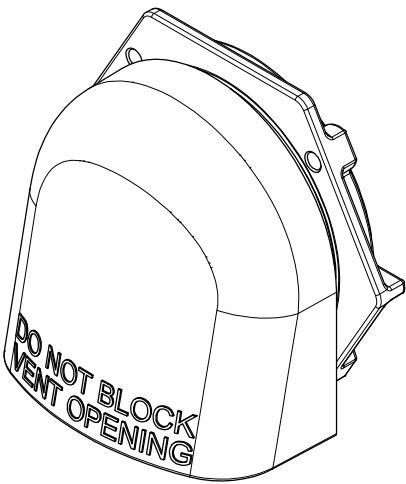
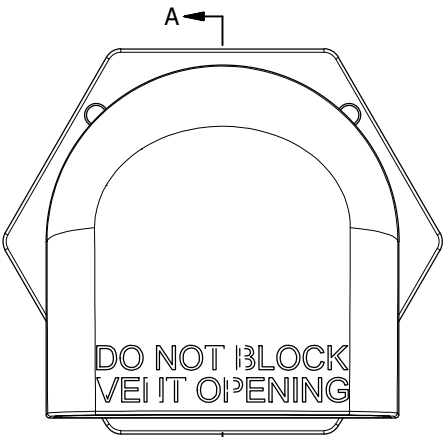


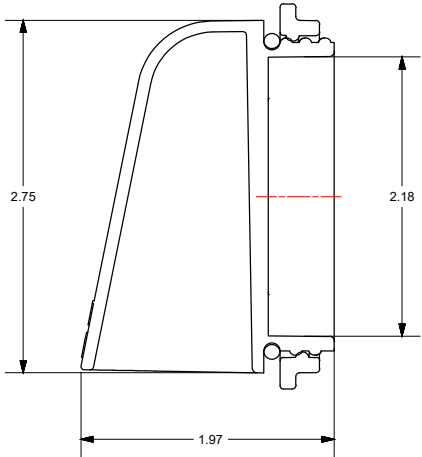
TOP VIEW



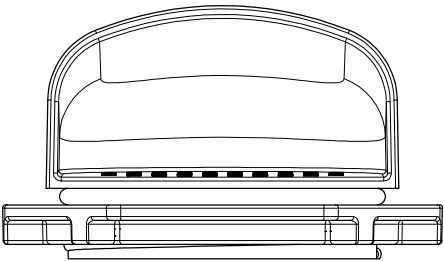
LEFT VIEW



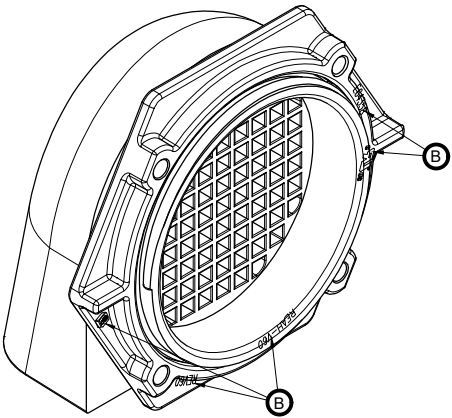
FRONT VIEW



SECTION A-A



BOTTOM VIEW

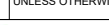


CONDITIONS OF ACCEPTABILITY:

1. THESE DEVICES ARE FOR "FOR USE ON A FLAT SURFACE OF A TYPE 1, 2 AND/OR 3R ENCLOSURE"
2. A "2-1/2 INCH (63.5mm) MAX" OPENING SHALL BE DRILLED INTO THE ENCLOSURE WALL FOR INSTALLATION OF THE VENT
3. A MAXIMUM ENCLOSURE WALL THICKNESS OF 0.188 IN. THICK SHALL BE USED
4. THE DRILLED OPENING SHALL BE CLEAN AND FREE OF BURRS AND DEBRIS IN ORDER FOR THE VENT TO SIT FLUSH AGAINST THE ENCLOSURE WALL
5. THERE SHOULD BE SUFFICIENT ROOM TO PROPERLY TIGHTEN THE LOCKNUT WHEN INSTALLING IN AN ENCLOSURE (12-18 IN-LBS RECOMMENDED)
6. THE VENT AIR EXHAUST OPENING SHALL BE INSTALLED ONLY IN THE DOWNWARDS POSITION
7. THE FLAT SIDE OF VENT RING NUT SHALL PRESS AGAINST THE INNER ENCLOSURE WALL

THIS DRAWING IS THE SOLE AND EXCLUSIVE PROPERTY OF ROBROY ENCLOSURES. NO PART OF THIS DRAWING MAY BE REPRODUCED, DISTRIBUTED, OR PUBLICALLY DISPLAYED IN ANY FORM OR BY ANY MEANS WITHOUT THE EXPRESS WRITTEN PERMISSION OF ROBROY ENCLOSURES. ALL RIGHTS RESERVED. UNDER THE COPYRIGHT LAWS. COPYRIGHT © 2018 ROBROY ENCLOSURES

SPECIAL REQUIREMENTS

NEMA 250: TYPE 3R IEC 60529			STANDARD P/N: SHREV-60		ALL DIMENSIONS ARE IN INCHES UNLESS OTHERWISE SPECIFIED		TOLERANCES UNLESS SPECIFIED		.XX ± 0.03		.XXX ± 0.010	
COLOR: N/A COLOR STANDARD: PANTONE 7541 C			CUSTOMER DWG: N/A		<div><div><b>ROBROY</b> <b>ENCLOSURES</b></div></div> <div><b>Robroy Enclosures</b> 500 Maple Street Belding, Michigan 48809 Phone: 616-794-0700 Fax: 616-749-3378</div>							
MATERIAL: POLYCARBONATE												
REVISION HISTORY												
REV	DESCRIPTION		DATE	ENG								
A	PER ECR 10237; NEW TOOL TO SOURCE LOCALLY		2/4/19	AA	DRAWN BY AA	DATE 1/11/18	CUSTOMER	DWG REV-60				
B	PER ECR16389; ADDED UL/PN/LOGO TO L-NUT		4/14/20	AA								
C	PER ECR16783; ADDED NOTES TO DWG		5/13/20	AA	SCALE		DESCRIPTION	PART NUMBER		SHREV-60		
-	-		-	-	DO NOT SCALE		VENT ASSEMBLY					

**Robroy Enclosures**  
500 Maple Street  
Belding, Michigan 48809  
Phone: 616-794-0700  
Fax: 616-749-3378