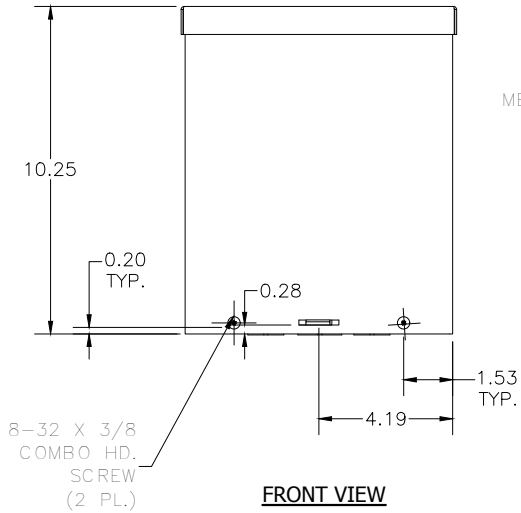
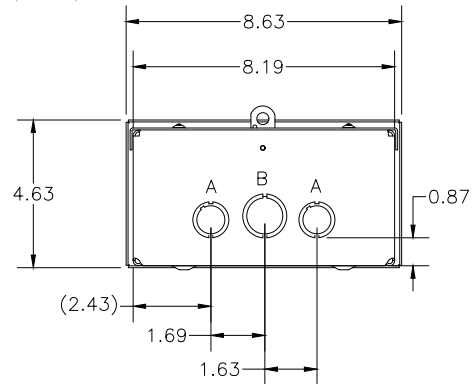


**TOP VIEW**

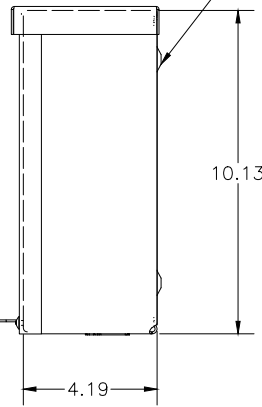


**FRONT VIEW**



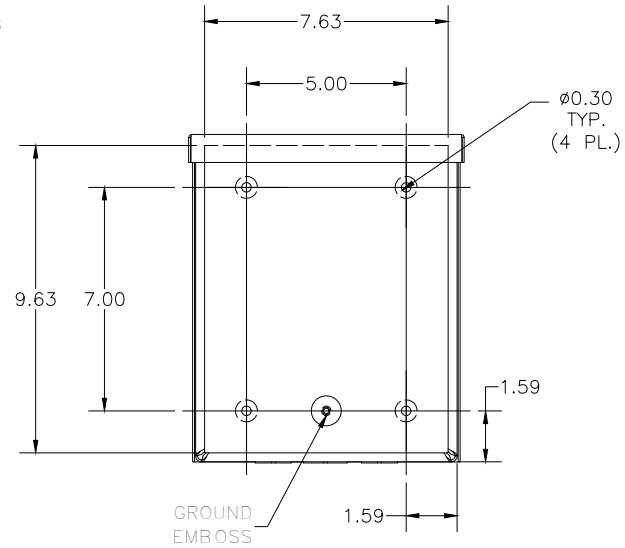
**BOTTOM VIEW**

HASP &  
METER SEAL

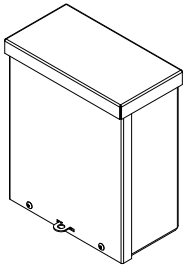


**RIGHT VIEW**

MOUNTING  
EMBOSS



**BACK VIEW**



KNOCK OUT SIZE	
LETTER	SIZES
A	1/2" TO 3/4"
B	3/4" TO 1"
F	1" TO 1-1/4"

PART#: RSC081004G  
(DATA SUBJECT TO CHANGE  
WITHOUT NOTICE)

THIS DRAWING IS PROPERTY OF HUBBELL INC.  
WIEGMANN  
ALL INFORMATION IS PROPRIETARY AND NOT TO BE  
DUPLICATED