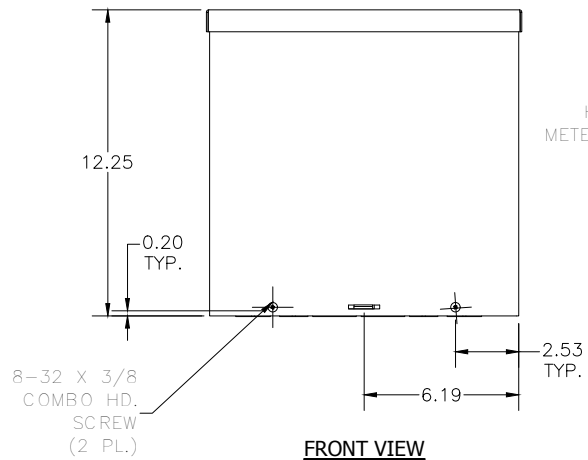
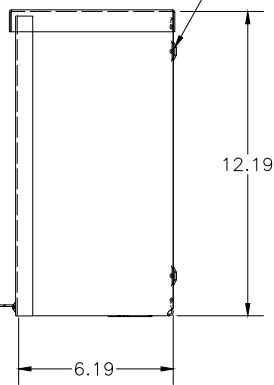


TOP VIEW

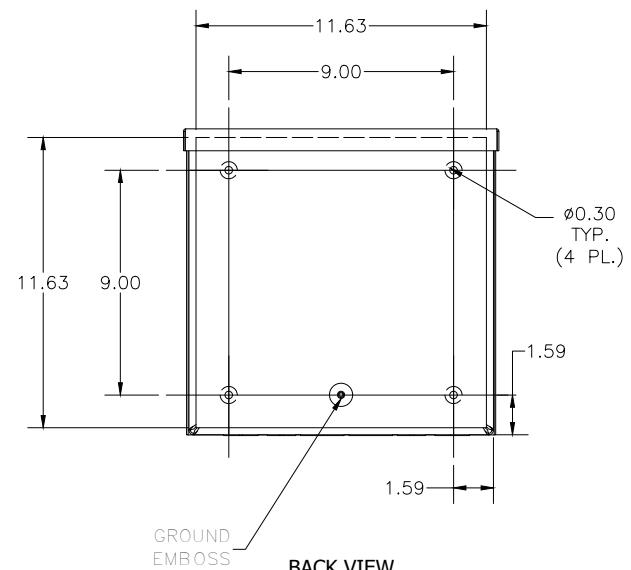


FRONT VIEW

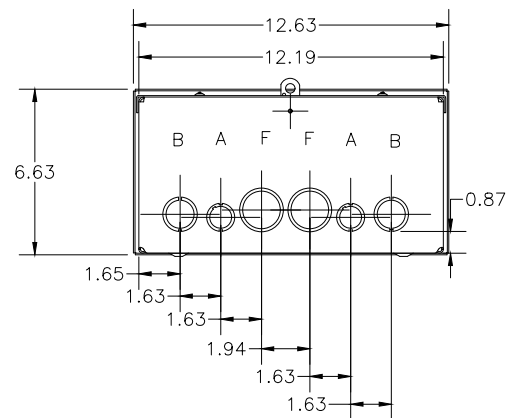
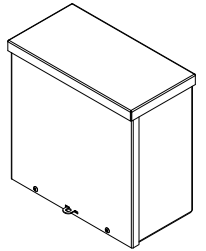
HASP &
METER SEAL



RIGHT VIEW



BACK VIEW



BOTTOM VIEW

| KNOCK OUT SIZE | |
|----------------|--------------|
| LETTER | SIZES |
| A | 1/2" TO 3/4" |
| B | 3/4" TO 1" |
| F | 1" TO 1-1/4" |

PART#: RSC121206G
(DATA SUBJECT TO CHANGE
WITHOUT NOTICE)

THIS DRAWING IS PROPERTY OF HUBBELL INC.
WIEGMANN
ALL INFORMATION IS PROPRIETARY AND NOT TO BE
DUPLICATED