

4

3

2

1

D

D

C

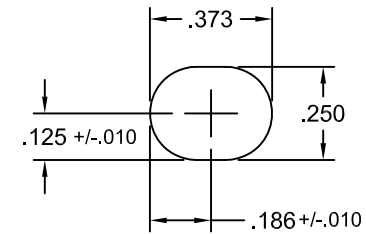
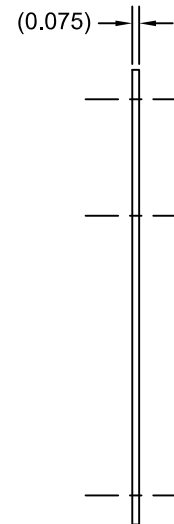
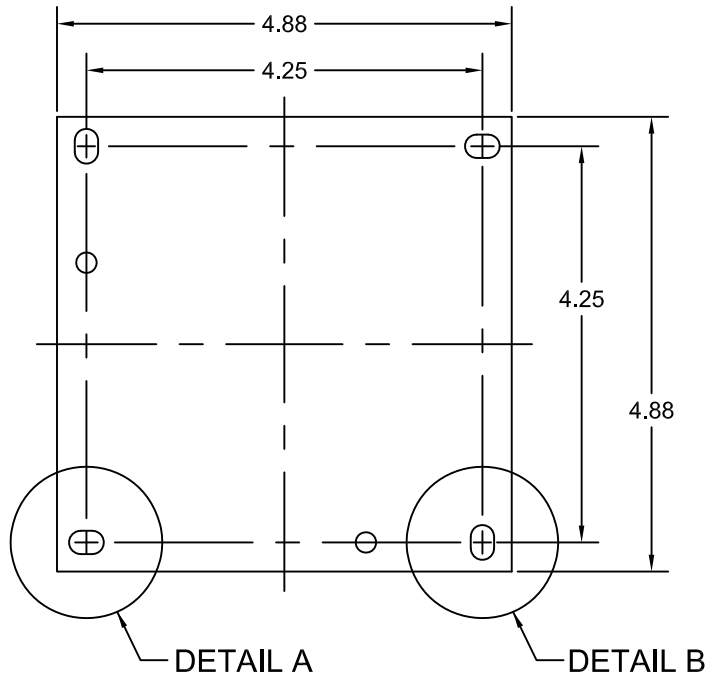
C

B

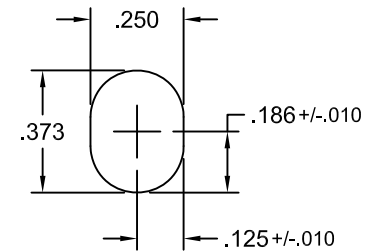
B

A

A



DETAIL A
2 PLACES
SCALE=NONE



DETAIL B
2 PLACES
SCALE=NONE

NOTES:

1. MATERIAL: 14 GAUGE STEEL, 0.075 THICK
2. FINISH: POWDER COATED WHITE
3. DIMENSIONS APPLY AFTER POWDER COAT

					INTEGRA ENCLOSURES		7700 TULAR BLVD. HUNTER, OHIO (440) 380-0100		M&M INDUSTRIES W. TIDWELL		
					DEFAULT TOLERANCES		SCALE	SHEET	DRAWN BY		
					DECIMAL .XX ±0.015 .XXX ±0.005		N/A	1 of 1	W. TIDWELL		
					FRACTIONAL ± 1/64		BACK PANEL, 6 X 6, STEEL				
					ANGULAR ±1°		DATE	DRAWING NUMBER	REV		
REV	DESCRIPTION				BY	DATE	EDM. NO.	APPROVED BY			