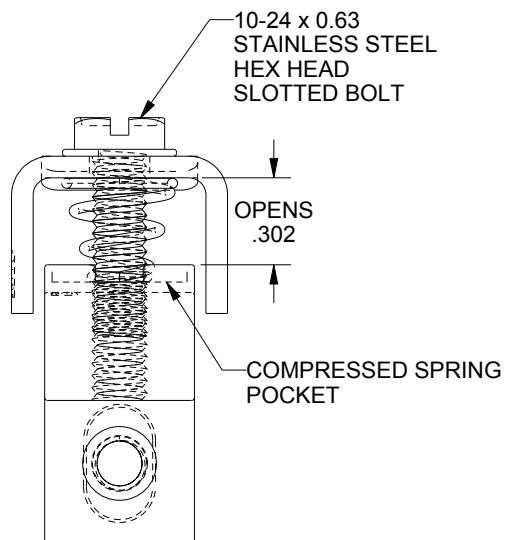
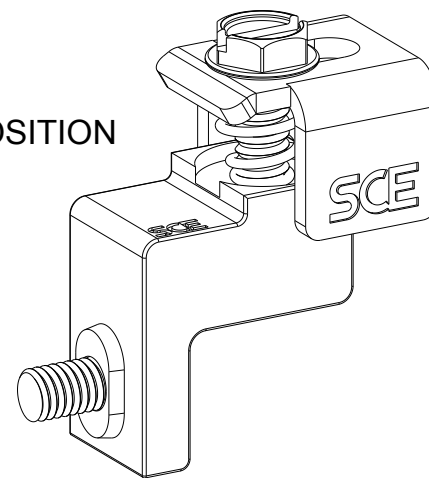


OPEN POSITION

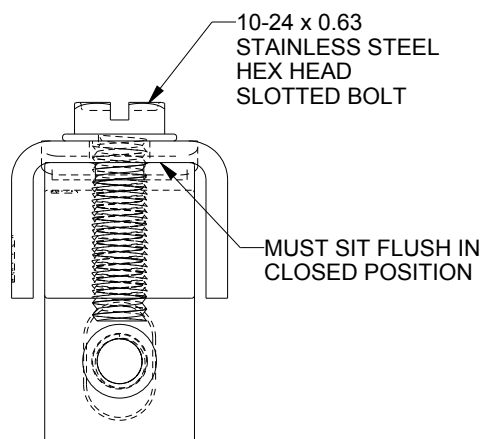
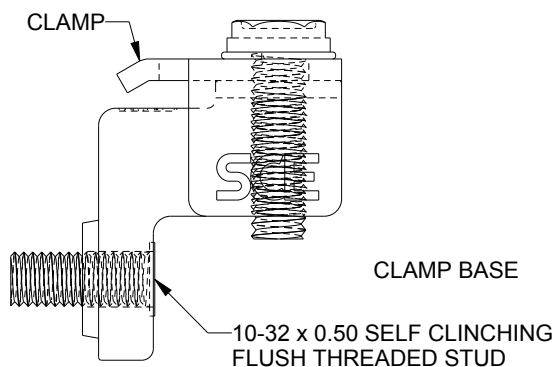
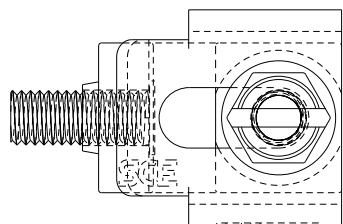


| ITEM | QTY | PART DESCRIPTION |
|------|-----|--|
| 1 | 1 | Base, CH Style, Zamak 5 With Trivalent Cromate and Topcoat Sealer |
| 2 | 1 | Clamp, Sliding, CH Style, 0.075" Type 304 Stainless Steel |
| 3 | 1 | Screw, Flanged, Hex Head, Slotted, 10-24 x 5/8", 304 Stainless Steel |
| 4 | 1 | Self Clinching Flush Head Stud 10-32 X 1/2", Zinc Plated Steel |
| 5 | 1 | Sprint, 0.035 Dia., 304 Stainless Steel |

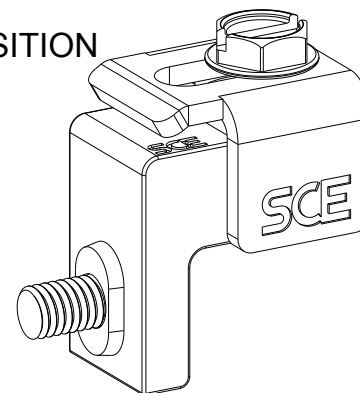
OPEN POSITION




CLOSED POSITION



CLOSED POSITION



| BY | REV. | DESCRIPTION OF CHANGES | DATE |
|----|------|------------------------|------|
|----|------|------------------------|------|

| | | | | |
|--|---|--|---|---|
| TOLERANCES UNLESS SPECIFIED LINEAR: 0.XX ± 0.020 LINEAR: 0.XXX ± 0.010 | DRAWN BY: Kajdan | | CUSTOMER: SAGINAW CONTROL & ENGINEERING | |
| | DATE: 10/07/15 | | PART NUMBER: SCE-CHCLAMP | |
| | MATERIAL UNLESS SPECIFIED ZAMAK 5, TRIVALENT CROMATE AND TOPCOAT SEALER | | COMPONENT: ASSEMBLY | REV: -- |
| | | | SHEET: 1 OF 1 |  Your Enclosure Source® |