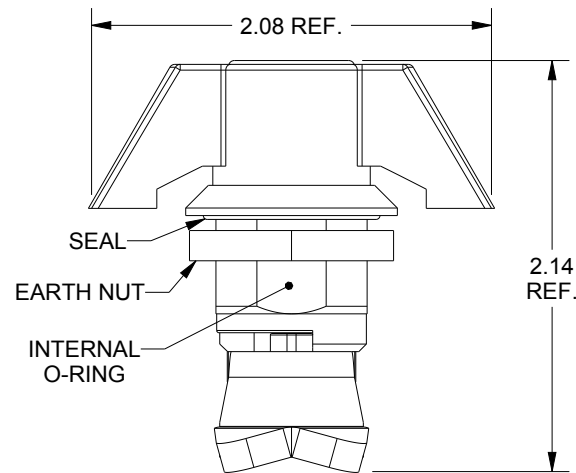
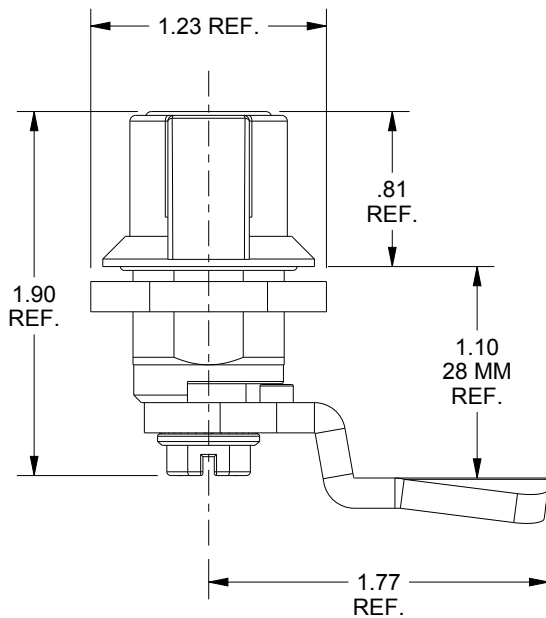
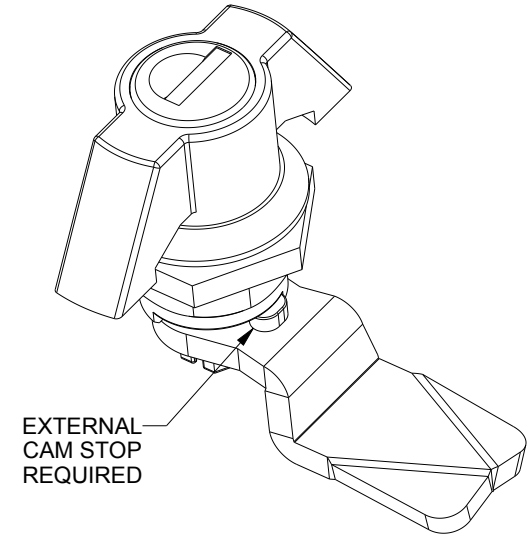
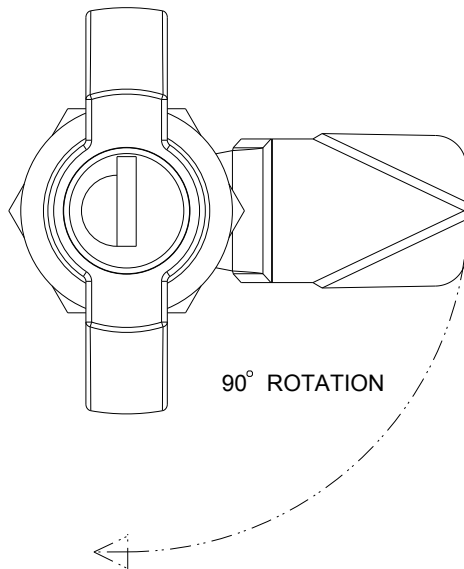
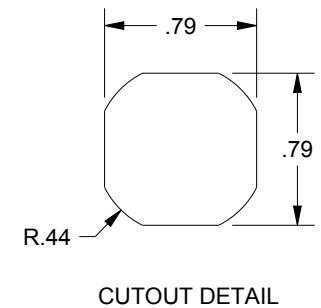


SAGINAW CONTROL & ENGINEERING

SCE-KLWNB, PART I.D. 101082



TO MAINTAIN TYPE
3, 3R, 4, 4X & 12



DESCRIPTION:
QUARTER TURN, WING KNOB, KEYLOCKING W/(2)
K333 KEYS, EXTERNAL CAM STOP, CAM INCLUDED
28 MM. ZINC DIE CAST, BLACK TEXTURED