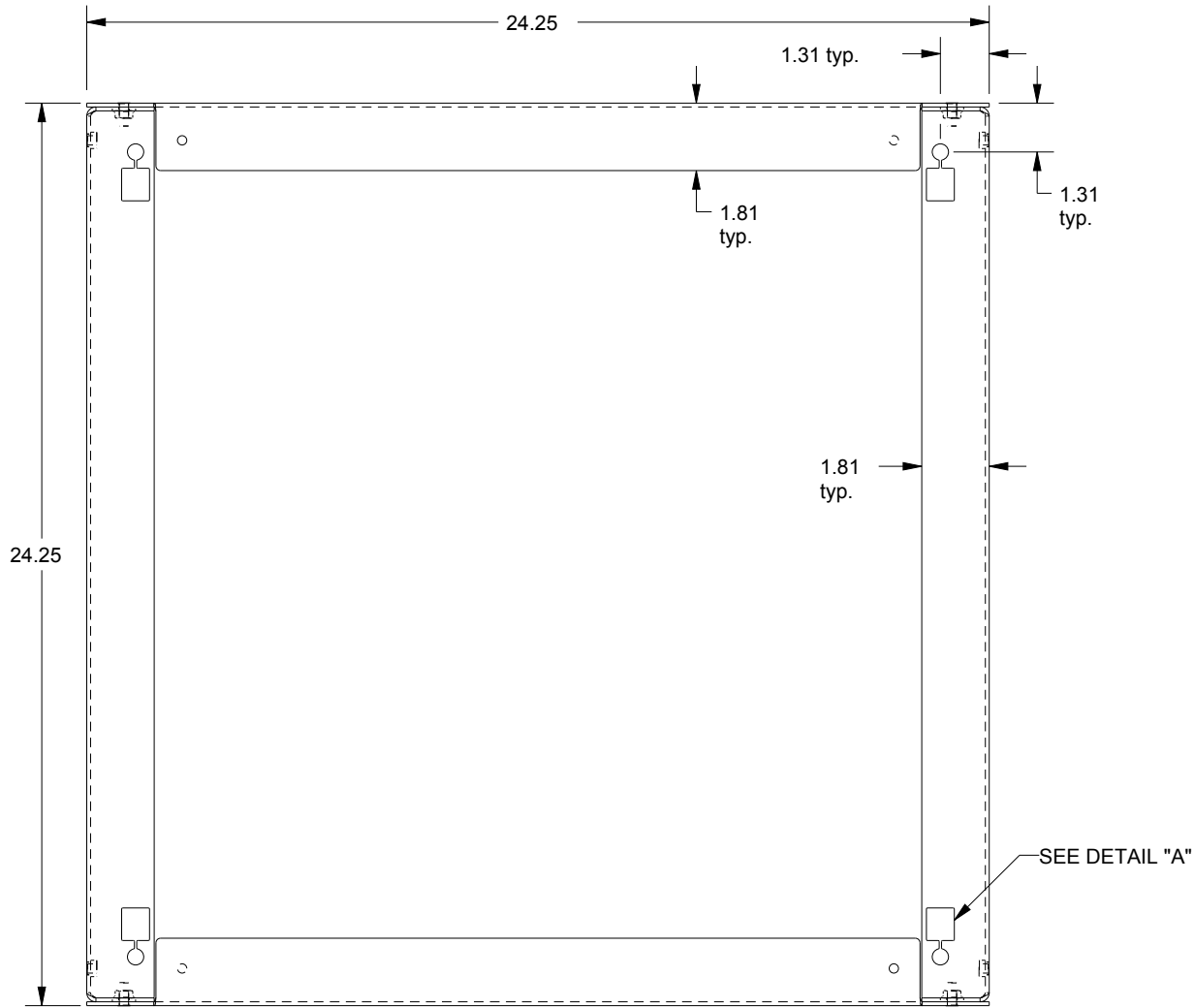


SAGINAW CONTROL & ENGINEERING

SCE-P2424WS

CONSTRUCTION NOTES:

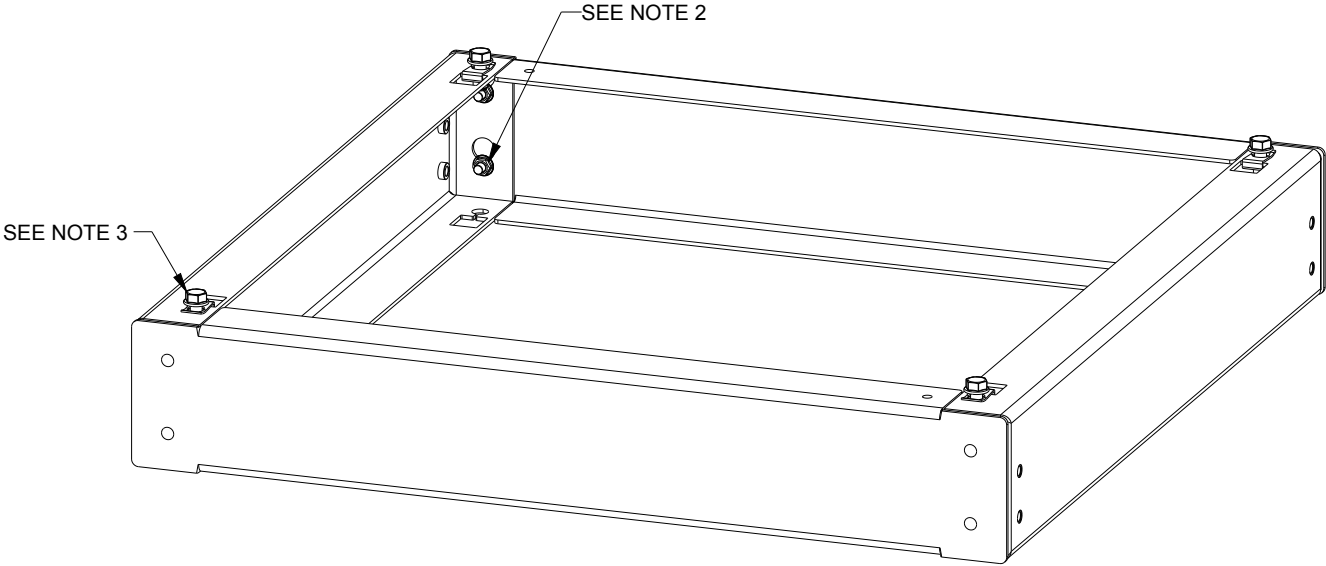
- 1. THE PLINTH BASE IS A BOLT TOGETHER CONSTRUCTION.
- 2. THE BASE IS BOLTED TOGETHER USING 1/4-20 HARDWARE, WHICH IS INCLUDED IN THE BOLT PACK.
- 3. 5/16-18 "U" NUTS & BOLTS ARE INCLUDED IN THE BOLT PACK FOR SECURING THE PLINTH BASE TO AN ENCLOSURE OR CONSOLE.
- 4. 1/4-20 SELF-CLINCHING PEM NUTS ARE INCLUDED IN BOTH SIDE CHANNELS FOR ATTACHING OPTIONAL MOUNTING ANGLES.



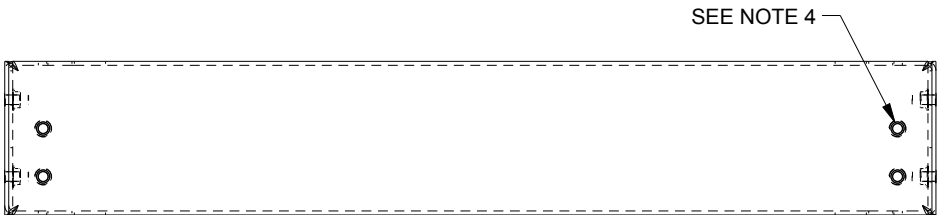
TOP VIEW



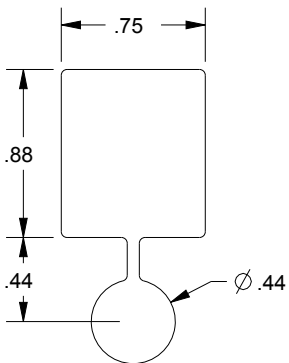
FRONT VIEW



PLINTH BASE
ASSEMBLED ISOMETRIC VIEW



RIGHT SIDE VIEW



DETAIL "A"
SCALE 1.000
(8plcs.)