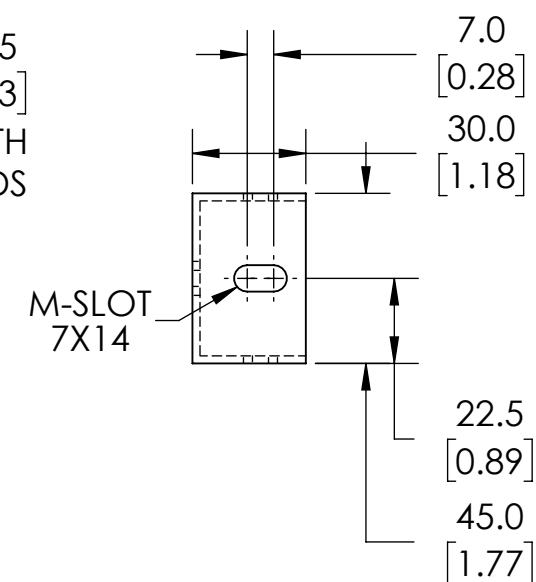
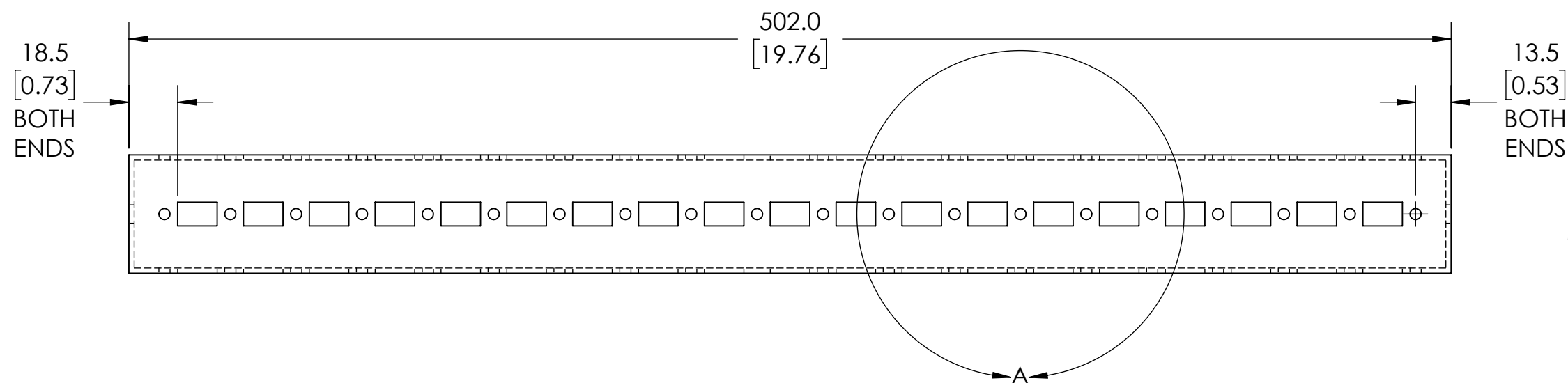
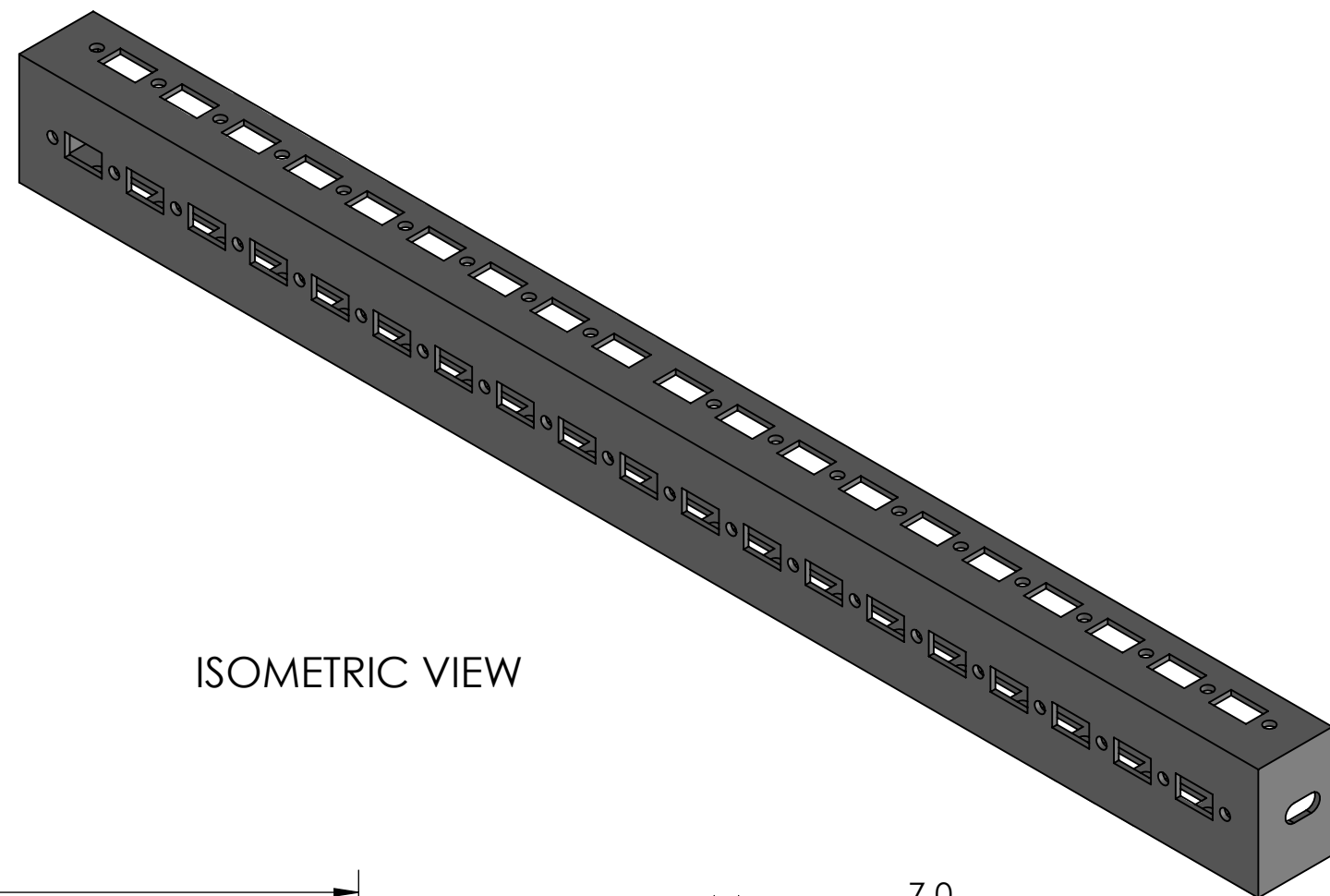


ISOMETRIC VIEW



NOTES:

1. DIMENSIONS CAN BE CHANGED BY MANUFACTURER WITHOUT NOTICE.
2. DIMENSIONS DO NOT IMPLY TOLERANCE.

SCK607

Units: mm [inches]
Scale: Full

QUADRITALIA CLOSED-END MOUNTING
CHANNEL, 502MM LENGTH, GALVANIZED STEEL.
FOR USE WITH 600MM WIDTH DEPTH
ENCLOSURES.