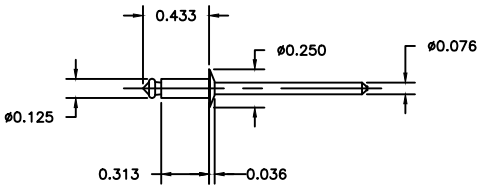
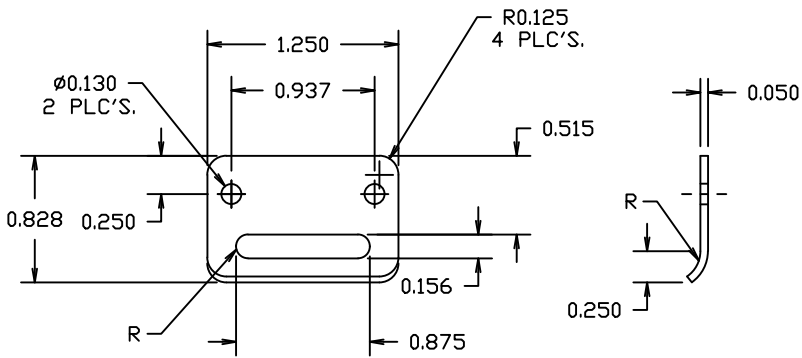


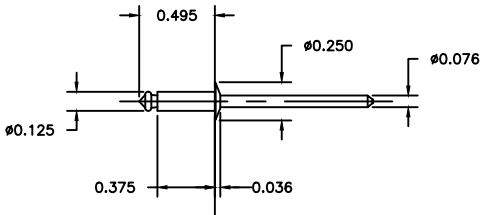
RMLATPLSSL



RMRIV43



RMKEEPSSL



RMRIV44

NOTES:

- NOTES:
- 1) ALL DIMENSIONS ARE IN INCHES.
 - 2) NO SHARP EDGES OR BURRS, ALL COMPONENTS ARE TO BE TUMBLED.
 - 3) PACK 3000 PARTS IN BULK PER EXPORT CARTON. THE MAXIMUM WEIGHT PER CARTON IS 50 POUNDS.
 - 4) EXPORT CARTON MUST BE CLEARLY MARKED WITH STAHLIN PART NUMBER "RMKEEPSSL".

ALL DIMENSIONS IN MM.							TOLERANCES		TWO PLACE	THREE PLACE
NO SHARP EDGES OR BURRS, ALL COMPONENTS ARE TO BE TUMBLED.							UNLESS SPECIFIED		±.020	±.005
MATERIAL					DR. BY	DATE	ROBROY ENCLOSURES			
S. S. 304 OR 316										
LET.	REVISION RECORD	DATE	BY	CHD.	CHK. BY	DATE	BELDING, MICHIGAN 48809			
					APD. BY	DATE				
					SCALE		CUSTOMER			
							PART NAME		PART NO.	
									RMSSLKIT	