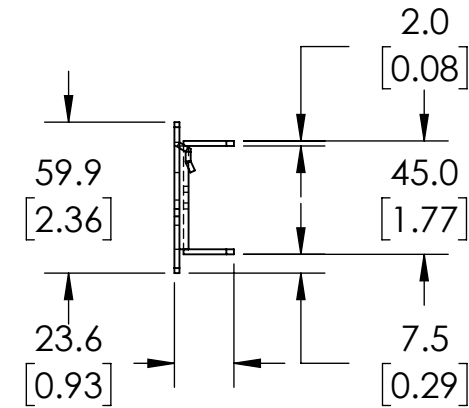
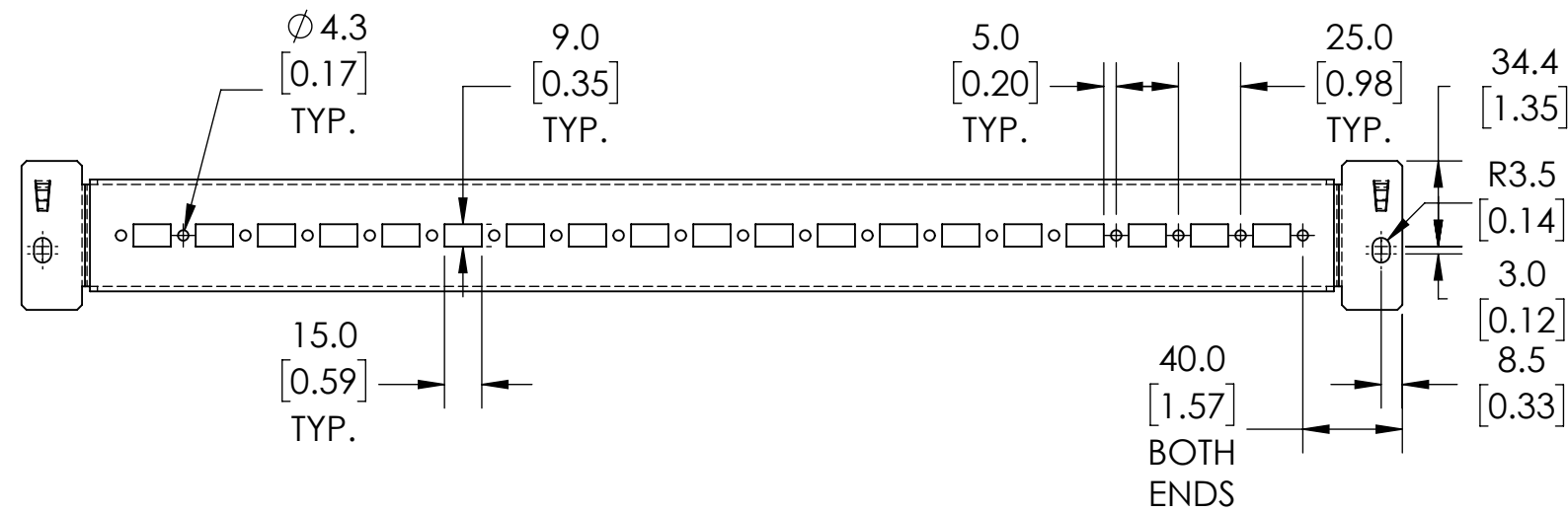
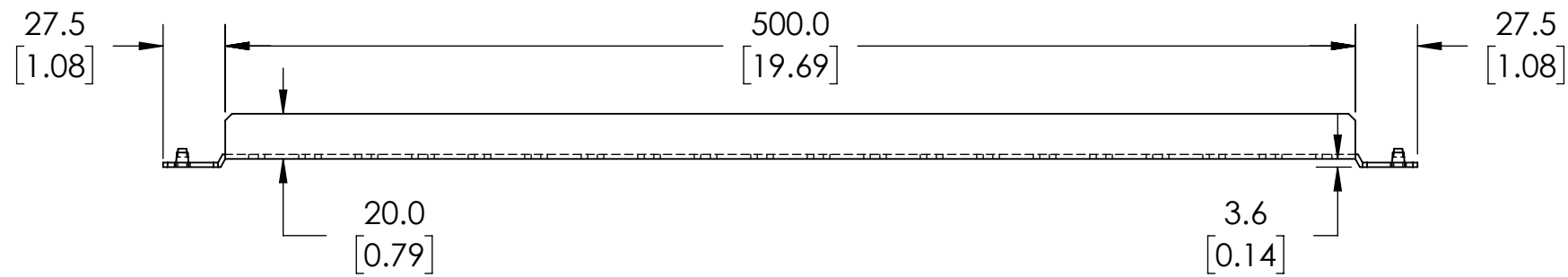


ISOMETRIC VIEW



NOTES:

1. DIMENSIONS CAN BE CHANGED BY MANUFACTURER WITHOUT NOTICE.
2. DIMENSIONS DO NOT IMPLY TOLERANCE.

STK645

Units: mm [inches]

Scale: Full

QUADRITALIA FLANGED MOUNTING CHANNEL,  
500MM LENGTH, GALVANIZED STEEL. FOR USE  
WITH 600MM WIDTH/DEPTH ENCLOSURES.