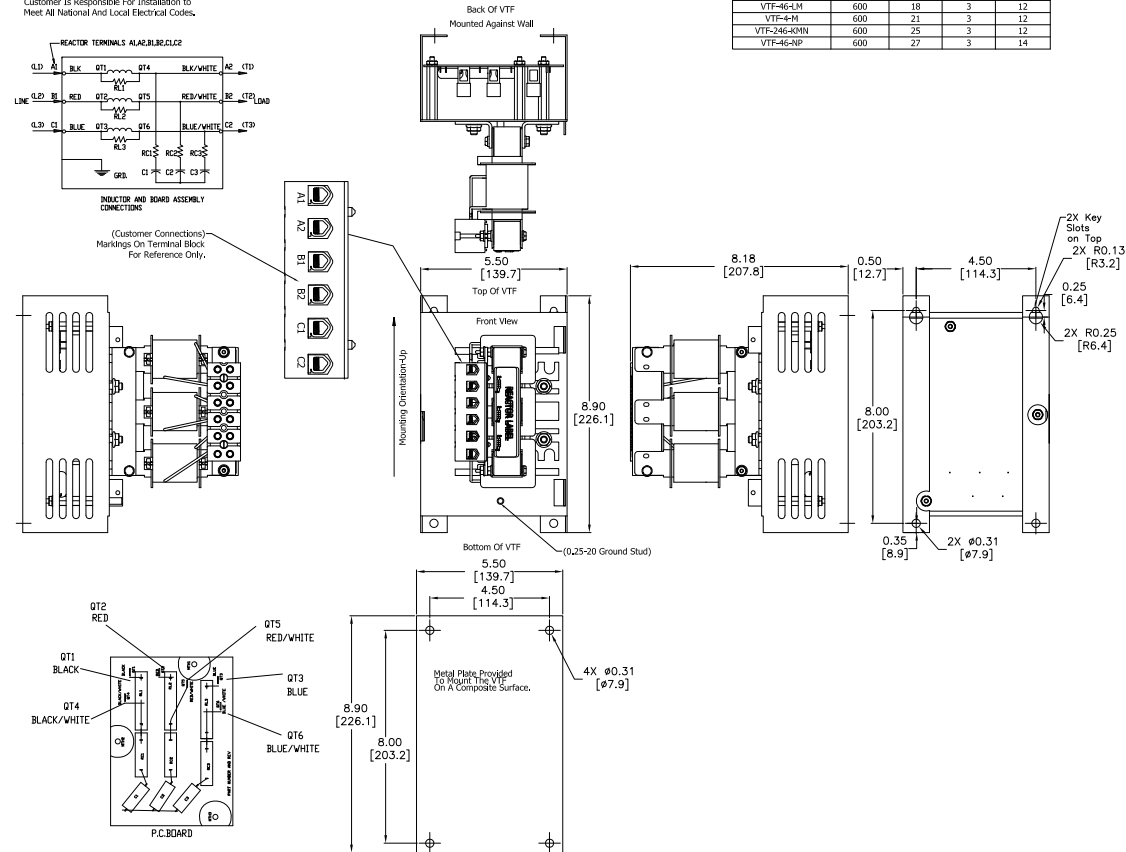


See VTF Installation Guide For  
Terminal Wire Size And Torque Information.  
Note: Maintain Clearance of 3 Inches On All Sides To Other Equipment.  
Customer Is Responsible For Installation to  
Meet All National And Local Electrical Codes.

Automation Direct Part#	Rated Voltage	Amps	Phase	Weight (LBS)
VTF-24-JL	600	16	3	12
VTF-46-LM	600	18	3	12
VTF-4-M	600	21	3	12
VTF-24G-4-M	600	25	3	12
VTF-46-NP	600	27	3	14



#### NOTES:

1. DIMENSIONS CAN BE CHANGED BY MANUFACTURER WITHOUT NOTICE.
2. DIMENSIONS DO NOT IMPLY TOLERANCE.

VTF-24-JL

Units: inches [mm]

Scale: Full

**VTF SERIES OUTPUT FILTER,  
230/460 VAC, 5HP, 10HP, 3-PHASE,  
16A, OUTPUT SIDE ONLY**

**AUTOMATIONDIRECT**.com