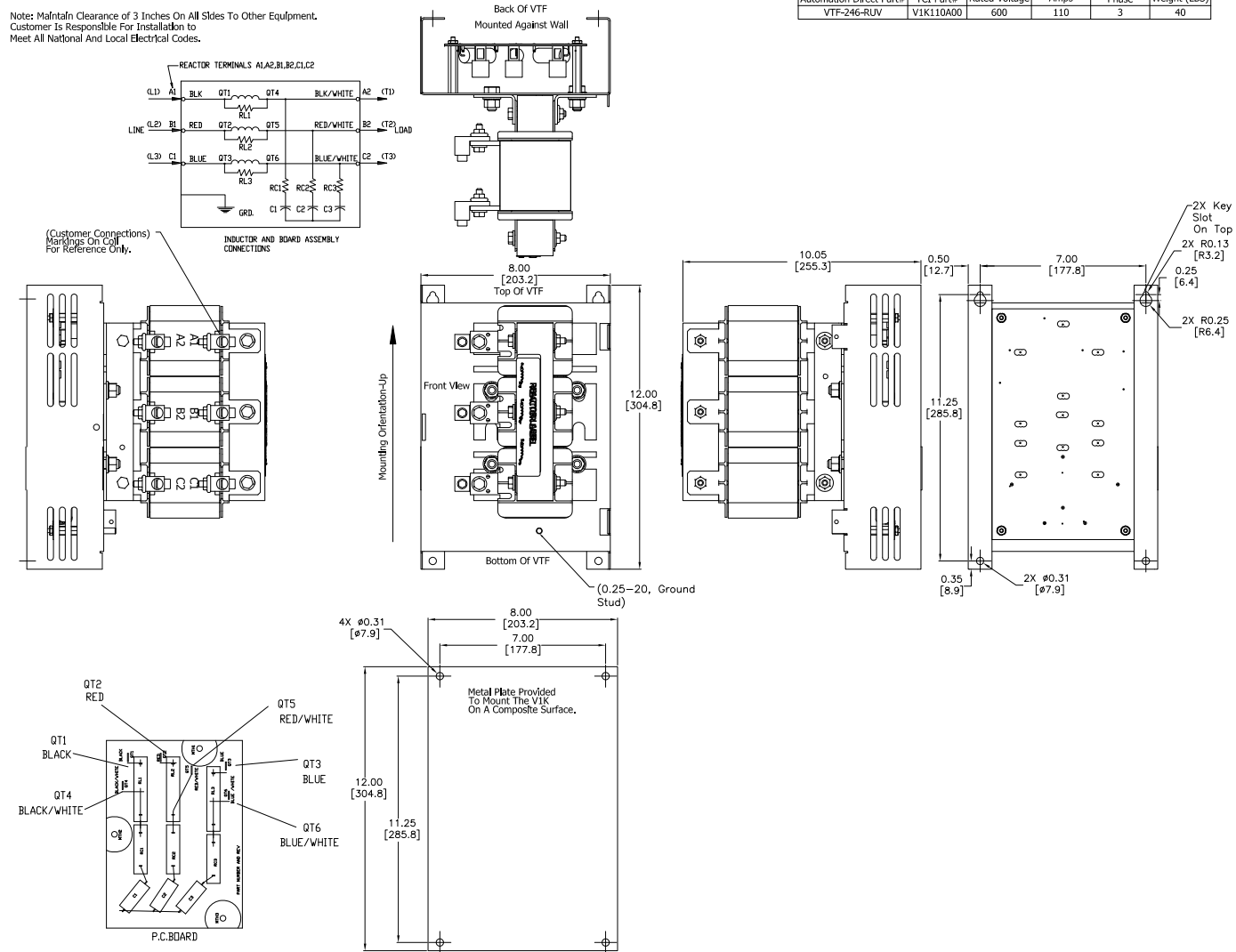


See VTF Installation Guide For
Terminal Wire Size And Torque Information.

Note: Maintain Clearance of 3 Inches On All Sides To Other Equipment.
Customer Is Responsible For Installation to
Meet All National And Local Electrical Codes.



Automation Direct Part#	TCI Part#	Rated Voltage	Amps	Phase	Weight (LBS)
VTF-246-RUV	V1K110A00	600	110	3	40

NOTES:

1. DIMENSIONS CAN BE CHANGED BY MANUFACTURER WITHOUT NOTICE.
2. DIMENSIONS DO NOT IMPLY TOLERANCE.

VTF-246-RUV

Units: inches [mm]

Scale: Full

VTF SERIES OUTPUT FILTER,
230/460/575 VAC, 40HP, 75HP, 100HP,
3-PHASE, 110A, OUTPUT SIDE ONLY

AUTOMATIONDIRECT.com