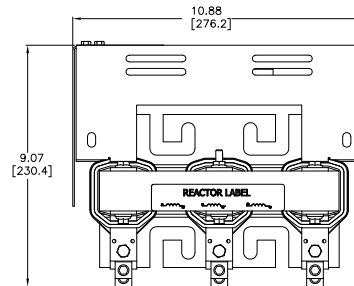
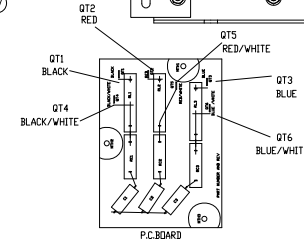
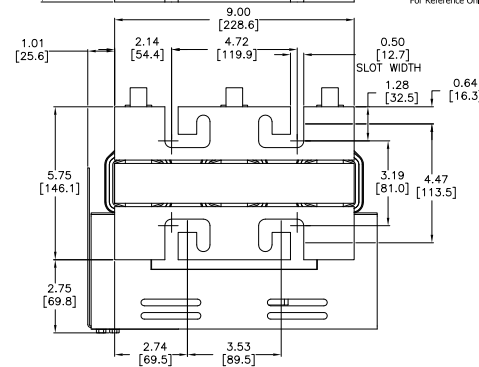
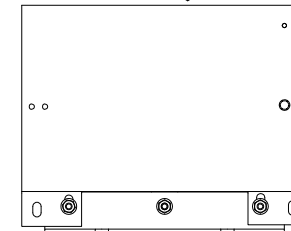
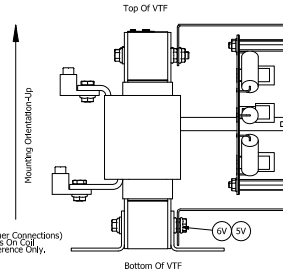
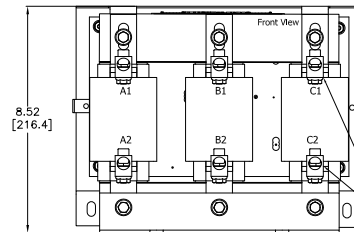
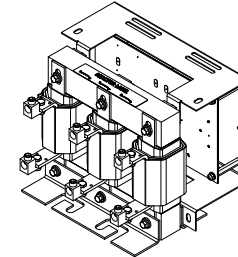
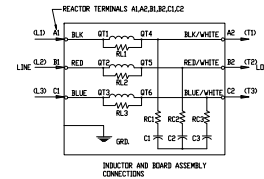


Automation Direct Part #	Rated Voltage	Amps	Phase	Weight (LBS)
VTF-246-SVW	600	130	3	55



See VTF Installation Guide For
Terminal Wire Size And Torque Information.
Note: Maintain Clearance of 3 Inches On All Sides To Other Equipment.
Customer Is Responsible For Installation To
Meet All National And Local Electrical Codes.



NOTES:

1. DIMENSIONS CAN BE CHANGED BY MANUFACTURER WITHOUT NOTICE.
2. DIMENSIONS DO NOT IMPLY TOLERANCE.

VTF-246-SVW

Units: inches [mm]

Scale: Full

VTF SERIES OUTPUT FILTER,
230/460/575 VAC, 50HP, 100HP, 125HP,
3-PHASE, 130A, OUTPUT SIDE ONLY

