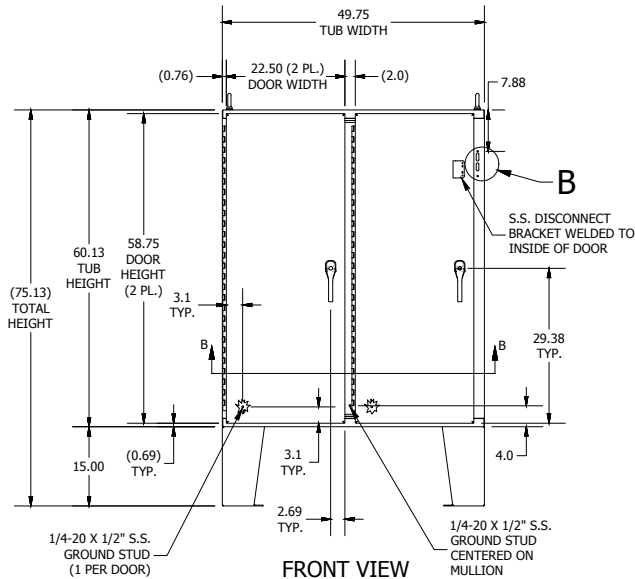
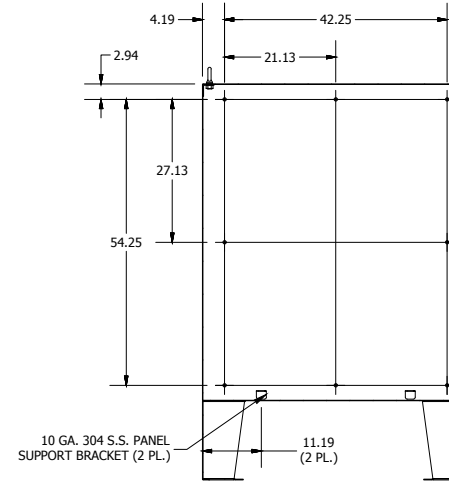


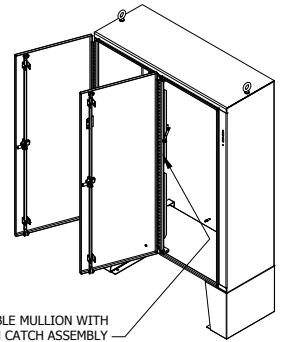
TOP VIEW



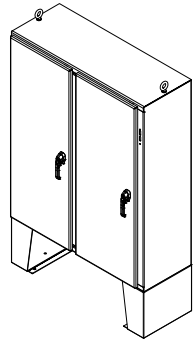
FRONT VIEW



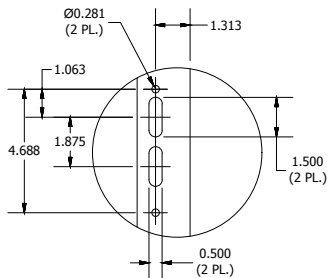
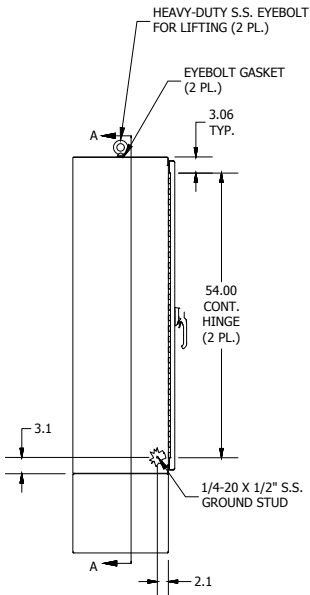
SECTION A-A
(INSIDE BACK OF ENCL.)



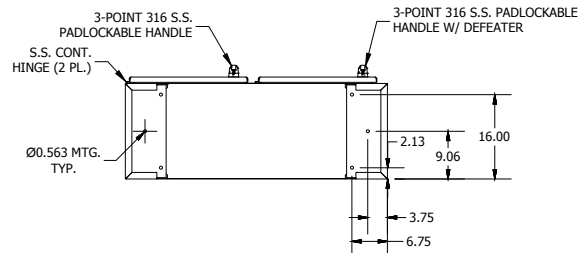
REMOVABLE MULLION WITH
DISCONNECT LATCH CATCH ASSEMBLY
(SEE HWDHFW500003 FOR DETAILS)



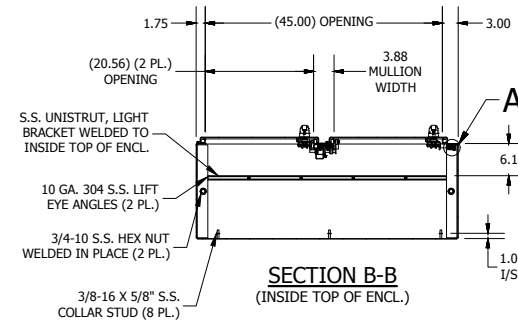
LEFT SIDE VIEW



DETAIL B
(DISCONNECT CUTOUT DETAIL)



BOTTOM VIEW



SECTION B-B
(INSIDE TOP OF ENCL.)

1/4-20 LOCK (KEP)
NUT (2 PL.)

UNIVERSAL ACTIVATOR ASSEMBLY
(SEE HWDHFW500002 FOR DETAILS)

1/4-20 X 3/4\"/>

DETAIL A
(UNIV. ACTIVATOR INSTALL)

PART#: HWDWA60X4918SSN4
(DATA SUBJECT TO CHANGE WITHOUT NOTICE)

THIS DRAWING IS PROPERTY OF HUBBELL INC. WIEGMANN
ALL INFORMATION IS PROPRIETARY AND NOT TO BE DUPLICATED