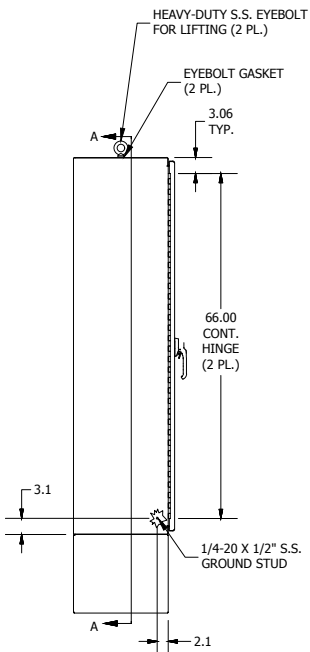
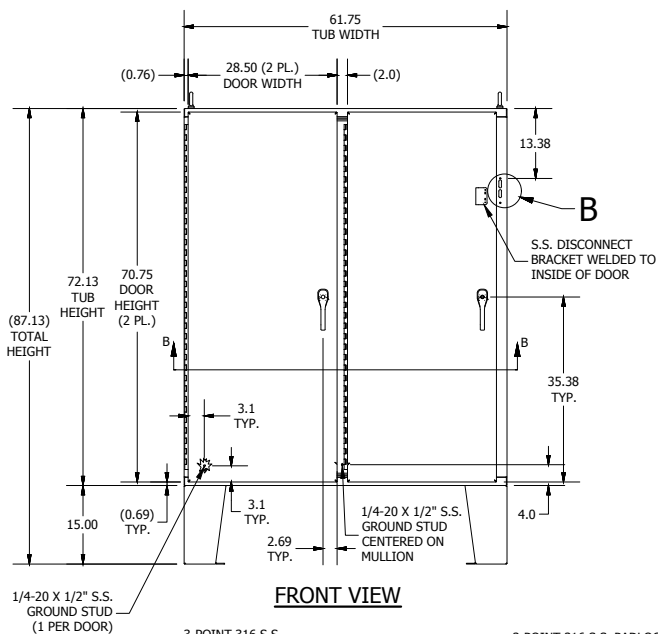


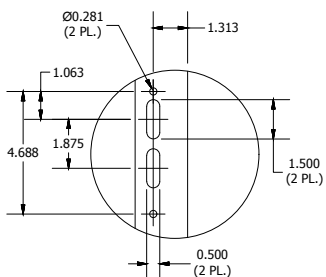
**TOP VIEW**



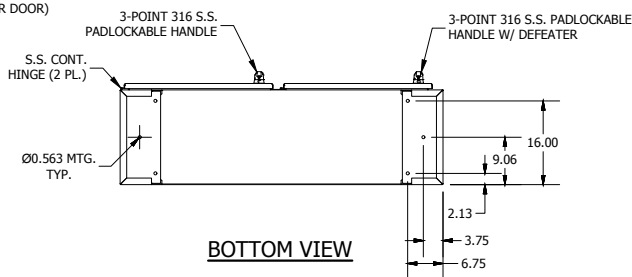
**LEFT SIDE VIEW**



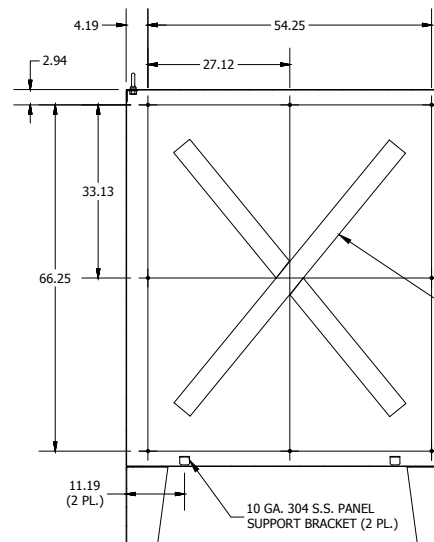
**FRONT VIEW**



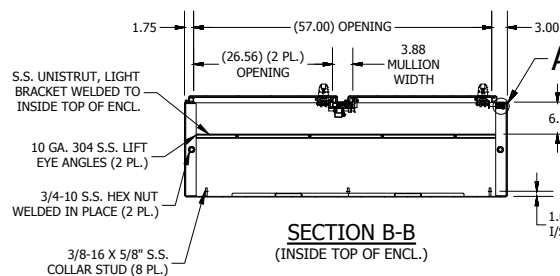
**DETAIL B**  
(DISCONNECT CUTOUT DETAIL)



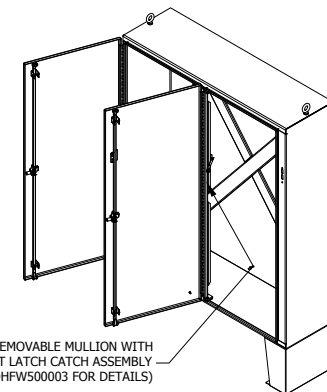
**BOTTOM VIEW**



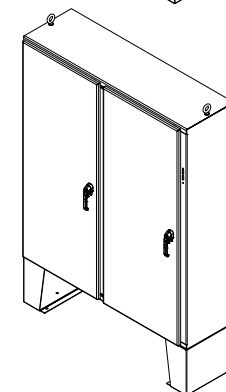
**SECTION A-A**  
(INSIDE BACK OF ENCL.)



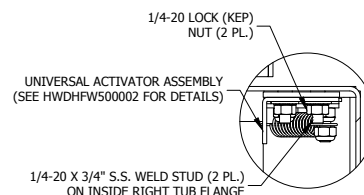
**SECTION B-B**  
(INSIDE TOP OF ENCL.)



REMOVABLE MULLION WITH  
DISCONNECT LATCH CATCH ASSEMBLY  
(SEE HWDHFW500003 FOR DETAILS)



10 GA. 304 S.S.  
CROSS STIFFENERS  
INSTALLED



**DETAIL A**  
(UNIV. ACTIVATOR INSTALL)

PART#: HWDWA72X6118SSN4  
(DATA SUBJECT TO CHANGE WITHOUT NOTICE)

THIS DRAWING IS PROPERTY OF HUBBELL INC. WIEGMANN  
ALL INFORMATION IS PROPRIETARY AND NOT TO BE DUPLICATED