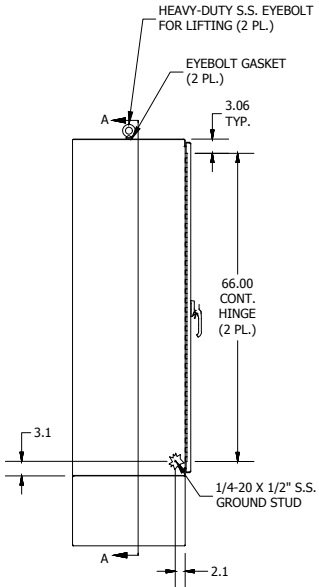
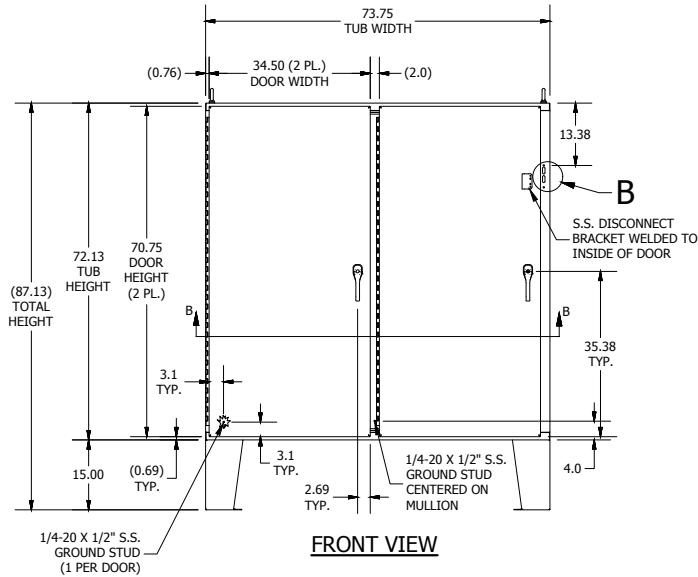


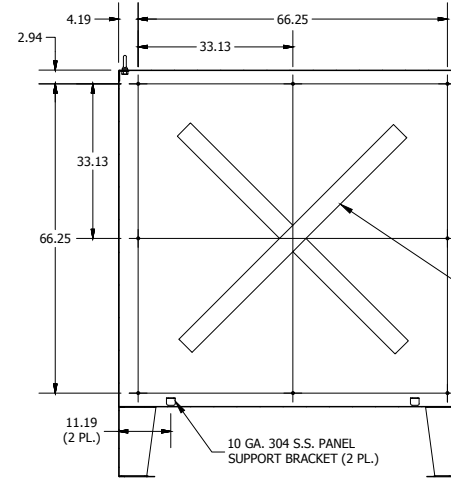
TOP VIEW



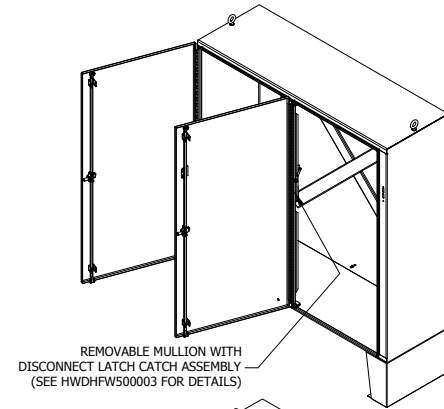
LEFT SIDE VIEW



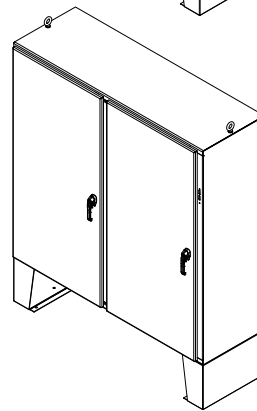
FRONT VIEW



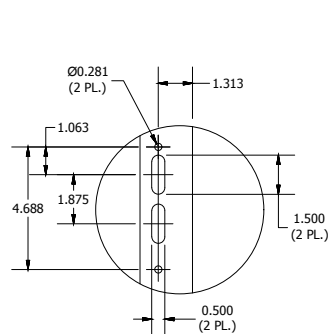
SECTION A-A
(INSIDE BACK OF ENCL.)



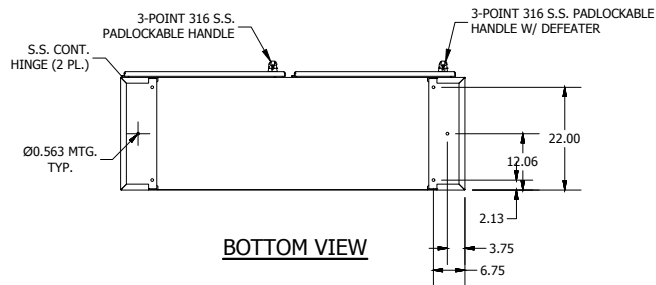
REMOVABLE MULLION WITH
DISCONNECT LATCH CATCH ASSEMBLY
(SEE HWDHFW500003 FOR DETAILS)



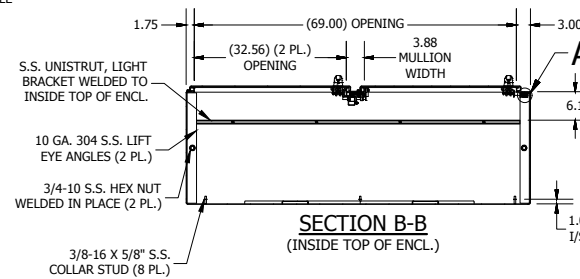
10 GA. 304 S.S.
CROSS STIFFENERS
INSTALLED



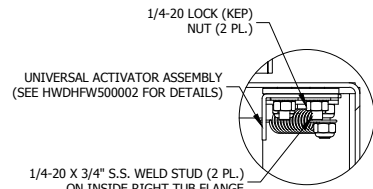
DETAIL B
(DISCONNECT CUTOUT DETAIL)



BOTTOM VIEW



SECTION B-B
(INSIDE TOP OF ENCL.)



DETAIL A
(UNIV. ACTIVATOR INSTALL)

PART#: HWDWA72X7324SSN4
(DATA SUBJECT TO CHANGE WITHOUT NOTICE)

THIS DRAWING IS PROPERTY OF HUBBELL INC. WIEGMANN
ALL INFORMATION IS PROPRIETARY AND NOT TO BE DUPLICATED