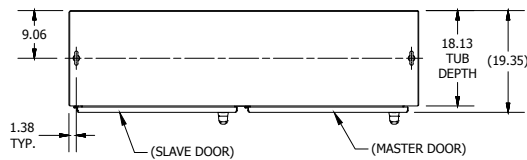


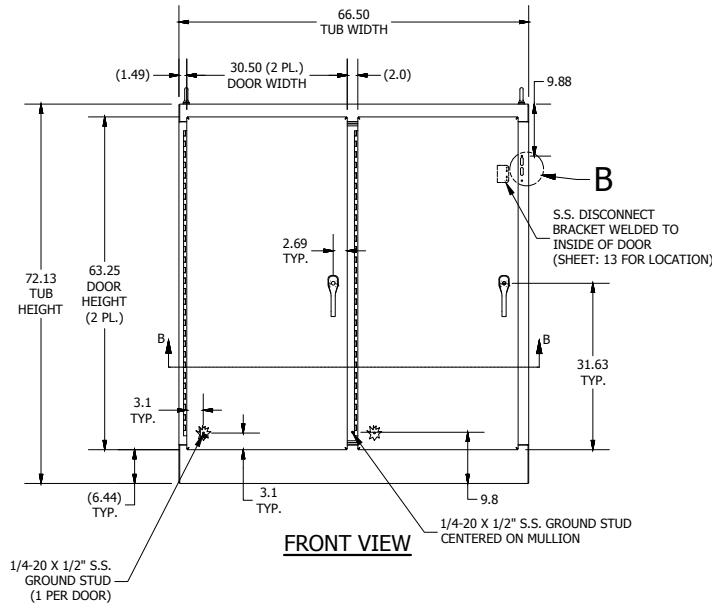
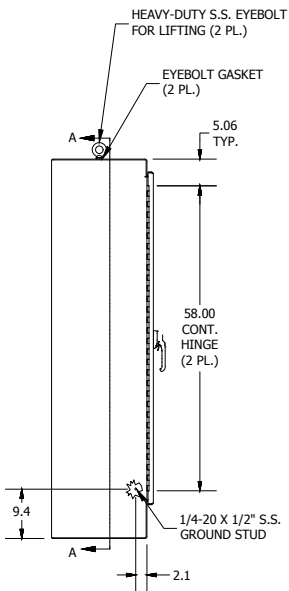
REVISION HISTORY			
REV	DESCRIPTION	BY	DATE
A	ECO# 20160606-1L	MR	04/27/2017

# NOTES:

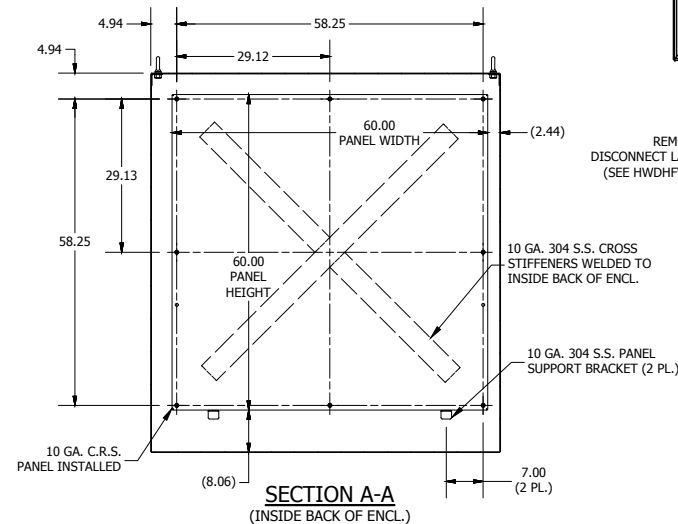
1. ALL DIMENSIONS ARE FROM OUTSIDE UNLESS OTHERWISE NOTED (1/S).
2. ENCLOSURE IS FABRICATED FROM 10 GA. 304 STAINLESS STEEL.
3. ALL SEAMS ARE CONTINUOUSLY WELDED & GROUND SMOOTH.
4. DOORS ARE SEALED WITH FOAM-IN-PLACE GASKET.
5. RIGHT DOOR (MASTER) IS SECURED SHUT WITH A 3-POINT 316 S.S. PADLOCKABLE HANDLE WITH BUILT IN DEFEATER.
6. LEFT DOOR (SLAVE) IS SECURED SHUT WITH A 3-POINT 316 S.S. PADLOCKABLE HANDLE WITHOUT DEFEATER.
7. A 10 GA. CARBON STEEL BACK PANEL IS INSTALLED PER DRAWING.
8. FINISH: EXTERIOR - STANDARD GRAINED FINISH.  
INTERIOR - STANDARD COMMERCIAL FINISH.  
PANEL - WHITE POLYESTER POWDER (SMOOTH).
9. ENCLOSURE IS RATED UL TYPE 4X.



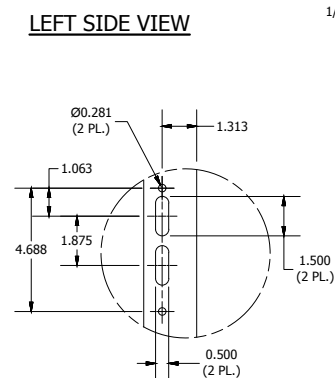
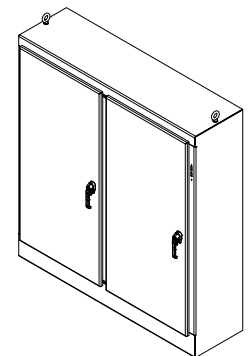
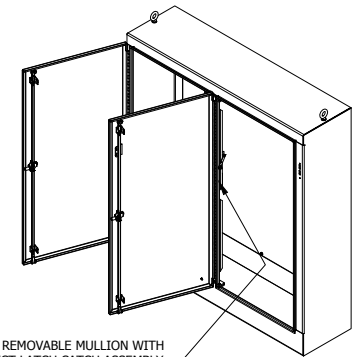
TOP VIEW



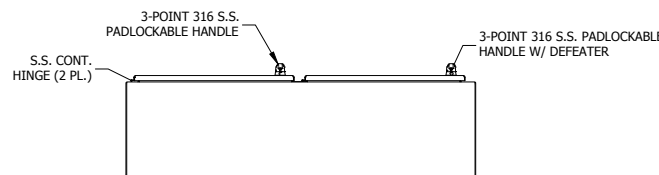
FRONT VIEW



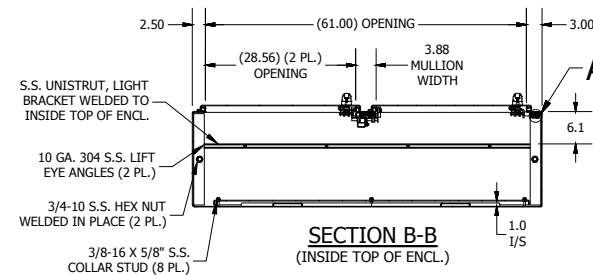
SECTION A-A  
(INSIDE BACK OF ENCL.)



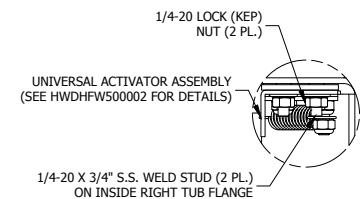
DETAIL B  
(DISCONNECT CUTOUT DETAIL)



BOTTOM VIEW



SECTION B-B  
(INSIDE TOP OF ENCL.)



DETAIL A  
(UNIV. ACTIVATOR INSTALL)

PART#: WA72XM6518SSN4  
(DATA SUBJECT TO CHANGE WITHOUT NOTICE)

THIS DRAWING IS PROPERTY OF HUBBELL INC. WIEGMANN  
ALL INFORMATION IS PROPRIETARY AND NOT TO BE DUPLICATED