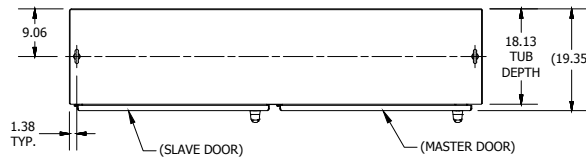
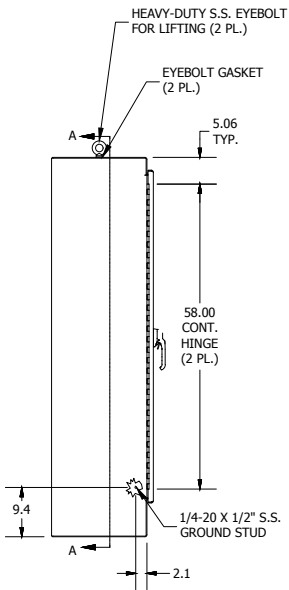


REVISION HISTORY			
REV	DESCRIPTION	BY	DATE
A	ECO# 20160606-1L	WF	04/27/2017

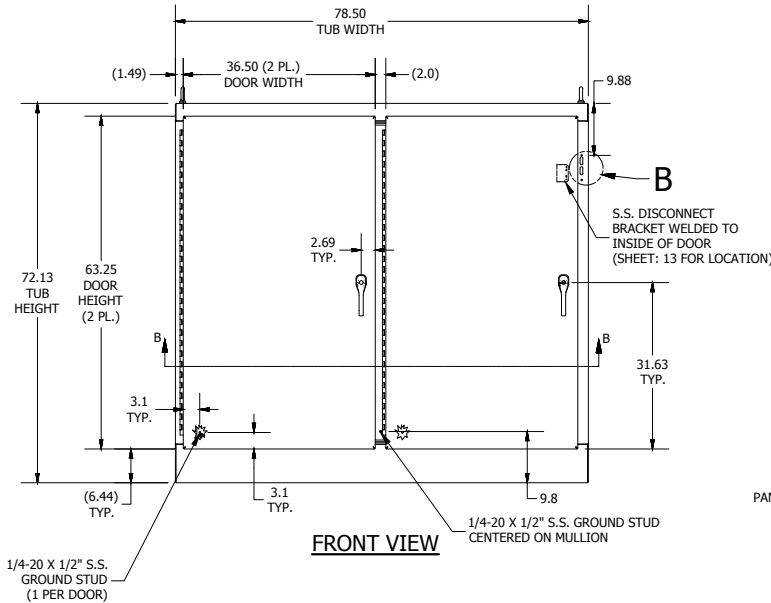
- NOTES:
1. ALL DIMENSIONS ARE FROM OUTSIDE UNLESS OTHERWISE NOTED (1/S).
  2. ENCLOSURE IS FABRICATED FROM 10 GA. 304 STAINLESS STEEL.
  3. ALL SEAMS ARE CONTINUOUSLY WELDED & GROUND SMOOTH.
  4. DOORS ARE SEALED WITH FOAM-IN-PLACE GASKET.
  5. RIGHT DOOR (MASTER) IS SECURED SHUT WITH A 3-POINT 316 S.S. PADLOCKABLE HANDLE WITH BUILT IN DEFEATER.
  6. LEFT DOOR (SLAVE) IS SECURED SHUT WITH A 3-POINT 316 S.S. PADLOCKABLE HANDLE WITHOUT DEFEATER.
  7. A 10 GA. CARBON STEEL BACK PANEL IS INSTALLED PER DRAWING.
  8. FINISH: EXTERIOR - STANDARD GRAINED FINISH.  
INTERIOR - STANDARD COMMERCIAL FINISH.  
PANEL - WHITE POLYESTER POWDER (SMOOTH).
  9. ENCLOSURE IS RATED UL TYPE 4X.



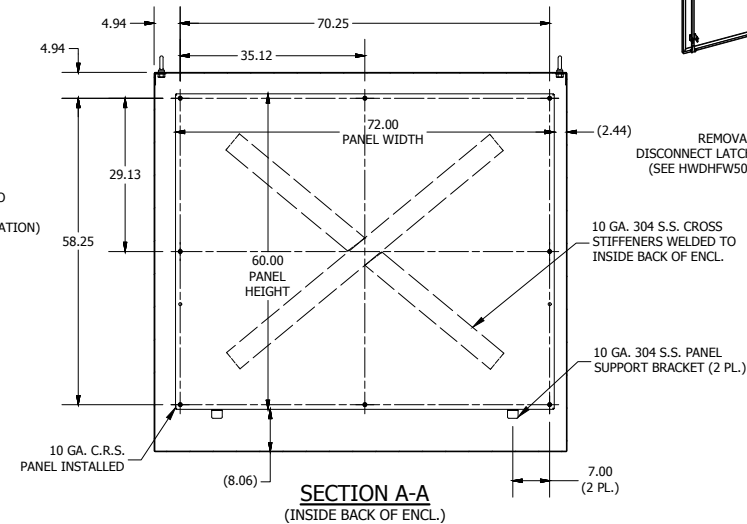
**TOP VIEW**



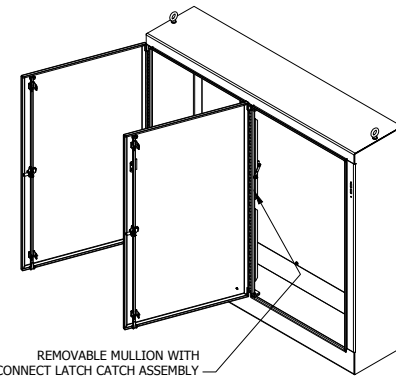
**LEFT SIDE VIEW**



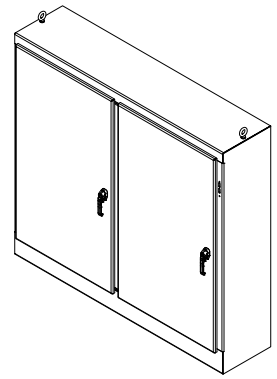
**FRONT VIEW**



**SECTION A-A**  
(INSIDE BACK OF ENCL.)

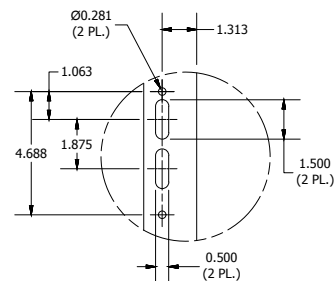


REMOVABLE MULLION WITH  
DISCONNECT LATCH CATCH ASSEMBLY  
(SEE HWDHPW500003 FOR DETAILS)

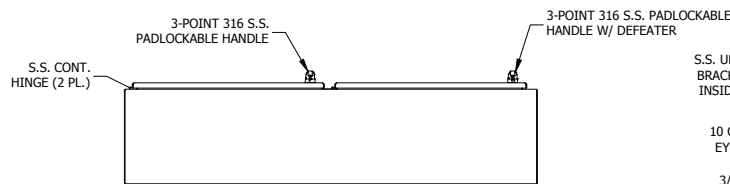


10 GA. 304 S.S. CROSS  
STIFFENERS WELDED TO  
INSIDE BACK OF ENCL.

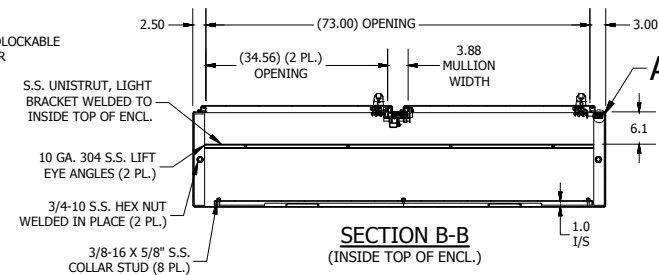
10 GA. 304 S.S. PANEL  
SUPPORT BRACKET (2 PL.)



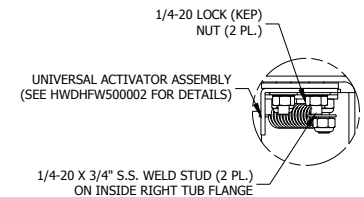
**DETAIL B**  
(DISCONNECT CUTOUT DETAIL)



**BOTTOM VIEW**



**SECTION B-B**  
(INSIDE TOP OF ENCL.)



**DETAIL A**  
(UNIV. ACTIVATOR INSTALL)

PART#: WA72XM7718SSN4  
(DATA SUBJECT TO CHANGE WITHOUT NOTICE)

THIS DRAWING IS PROPERTY OF HUBBELL INC. WIEGMANN  
ALL INFORMATION IS PROPRIETARY AND NOT TO BE DUPLICATED