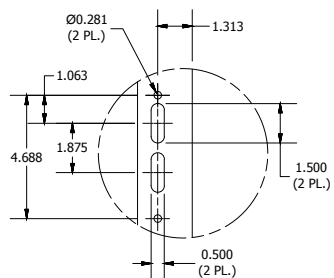
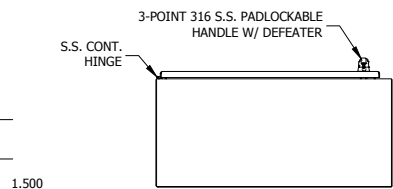


LEFT SIDE VIEW

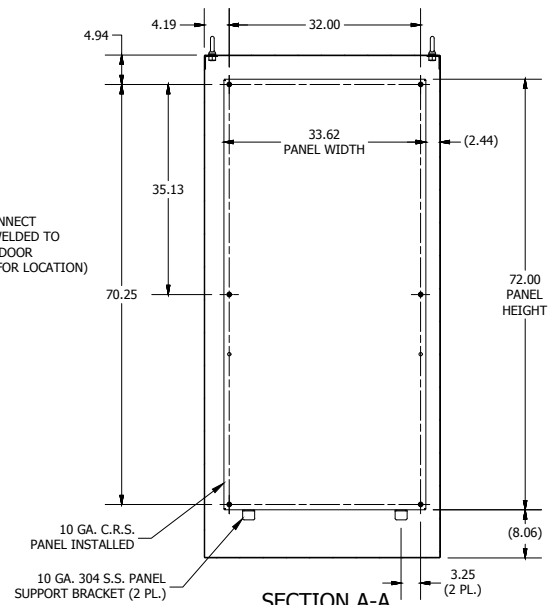


DETAIL B
(DISCONNECT CUTOUT DETAIL)

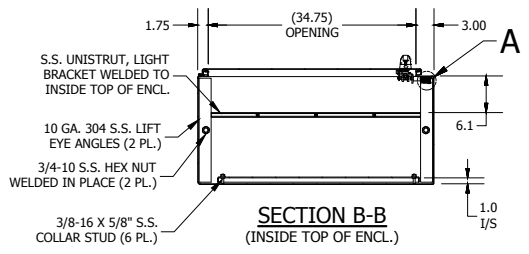


BOTTOM VIEW

- NOTES:**
1. ALL DIMENSIONS ARE FROM OUTSIDE UNLESS OTHERWISE NOTED (I/S).
 2. ENCLOSURE IS FABRICATED FROM 12 GA. 304 STAINLESS STEEL.
 3. ALL SEAMS ARE CONTINUOUSLY WELDED & GROUND SMOOTH.
 4. DOOR IS SEALED WITH FOAM-IN-PLACE GASKET.
 5. DOOR IS SECURED SHUT WITH A 3-POINT 316 S.S. PADLOCKABLE HANDLE WITH BUILT IN DEFEATER.
 6. A 10 GA. CARBON STEEL BACK PANEL IS INSTALLED PER DRAWING.
 7. FINISH: EXTERIOR - STANDARD GRAINED FINISH.
INTERIOR - STANDARD COMMERCIAL FINISH.
PANEL - WHITE POLYESTER POWDER (SMOOTH).
 8. ENCLOSURE IS RATED UL TYPE 4X.

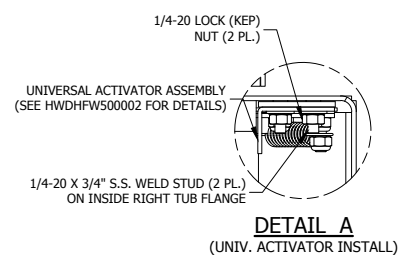
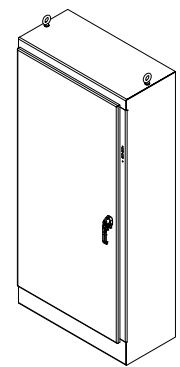
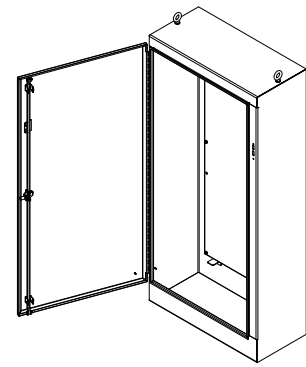


SECTION A-A
(INSIDE BACK OF ENCL.)



SECTION B-B
(INSIDE TOP OF ENCL.)

REVISION HISTORY			
REV	DESCRIPTION	BY	DATE
A	ECO# 20160606-1L	MR	05/09/2017



DETAIL A
(UNIV. ACTIVATOR INSTALL)

PART#: WA84XM3918SSN4
(DATA SUBJECT TO CHANGE WITHOUT NOTICE)

THIS DRAWING IS PROPERTY OF HUBBELL INC. WIEGMANN
ALL INFORMATION IS PROPRIETARY AND NOT TO BE DUPLICATED