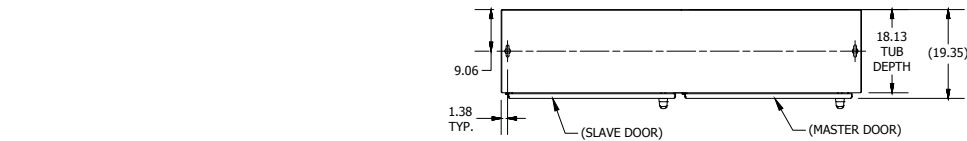
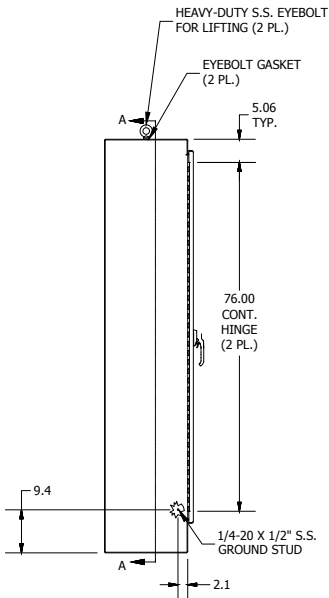


REVISION HISTORY			
REV	DESCRIPTION	BY	DATE
A	ECO# 20160606-1L	WF	5/9/2017

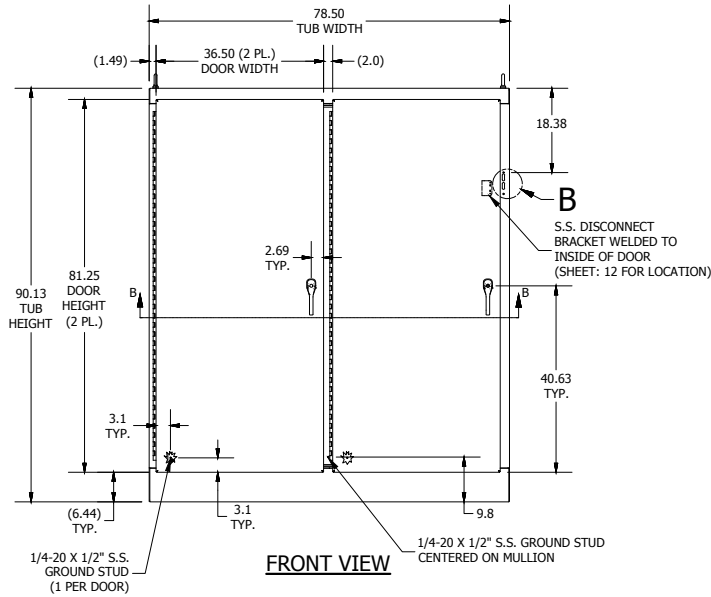
- NOTES:
1. ALL DIMENSIONS ARE FROM OUTSIDE UNLESS OTHERWISE NOTED (1/5).
 2. ENCLOSURE IS FABRICATED FROM 10 GA. 304 STAINLESS STEEL.
 3. ALL SEAMS ARE CONTINUOUSLY WELDED & GROUND SMOOTH.
 4. DOORS ARE SEALED WITH FOAM-IN-PLACE GASKET.
 5. RIGHT DOOR (MASTER) IS SECURED SHUT WITH A 3-POINT 316 S.S. PADLOCKABLE HANDLE WITH BUILT IN DEFEATER.
 6. LEFT DOOR (SLAVE) IS SECURED SHUT WITH A 3-POINT 316 S.S. PADLOCKABLE HANDLE WITHOUT DEFEATER.
 7. A 10 GA. CARBON STEEL BACK PANEL IS INSTALLED PER DRAWING.
 8. FINISH: EXTERIOR - STANDARD GRAINED FINISH.
INTERIOR - STANDARD COMMERCIAL FINISH.
PANEL - WHITE POLYESTER POWDER (SMOOTH).
 9. ENCLOSURE IS RATED UL TYPE 4X.



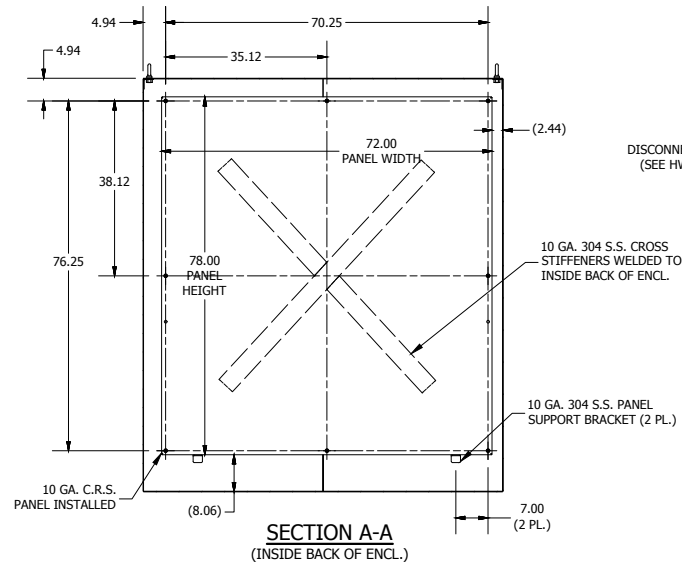
TOP VIEW



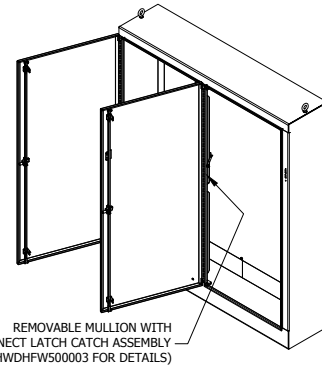
LEFT SIDE VIEW



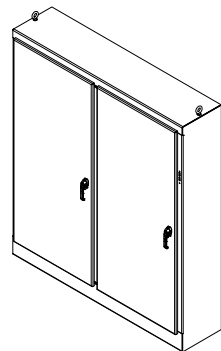
FRONT VIEW



SECTION A-A
(INSIDE BACK OF ENCL.)

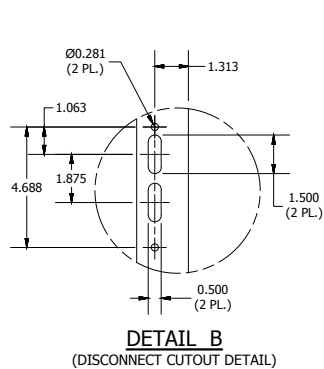


REMOVABLE MULLION WITH
DISCONNECT LATCH CATCH ASSEMBLY
(SEE HWDHFW500003 FOR DETAILS)

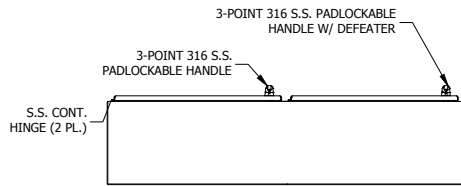


10 GA. 304 S.S. CROSS
STIFFENERS WELDED TO
INSIDE BACK OF ENCL.

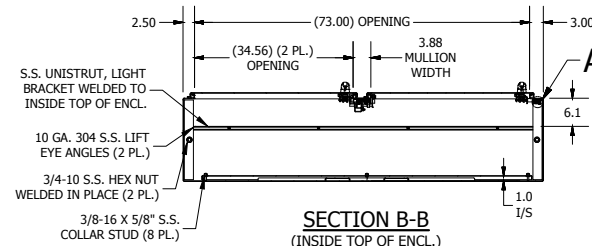
10 GA. 304 S.S. PANEL
SUPPORT BRACKET (2 PL.)



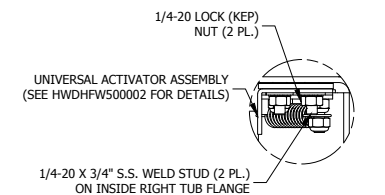
DETAIL B
(DISCONNECT CUTOUT DETAIL)



BOTTOM VIEW



SECTION B-B
(INSIDE TOP OF ENCL.)



DETAIL A
(UNIV. ACTIVATOR INSTALL)

PART#: WA90XM7718SSN4
(DATA SUBJECT TO CHANGE WITHOUT NOTICE)

THIS DRAWING IS PROPERTY OF HUBBELL INC. WIEGMANN
ALL INFORMATION IS PROPRIETARY AND NOT TO BE DUPLICATED