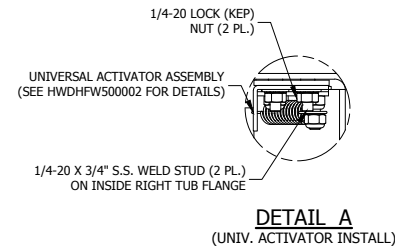
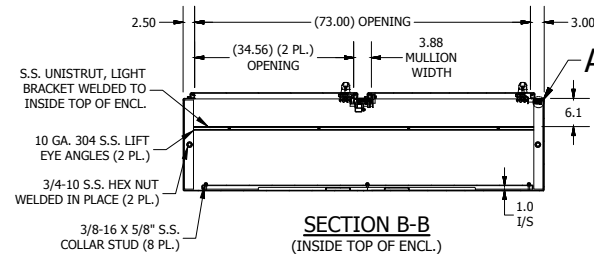
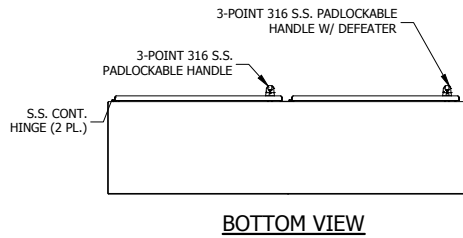
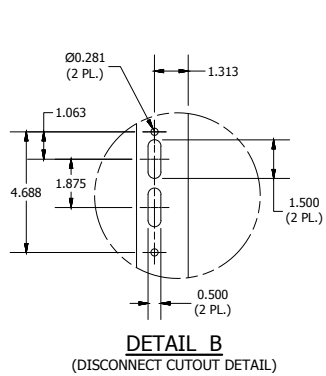
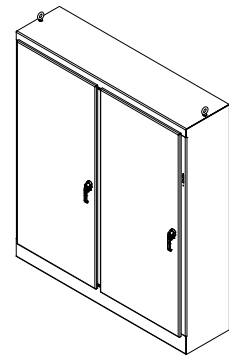
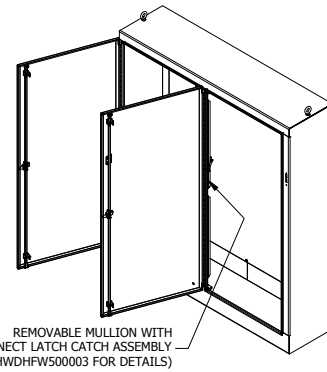
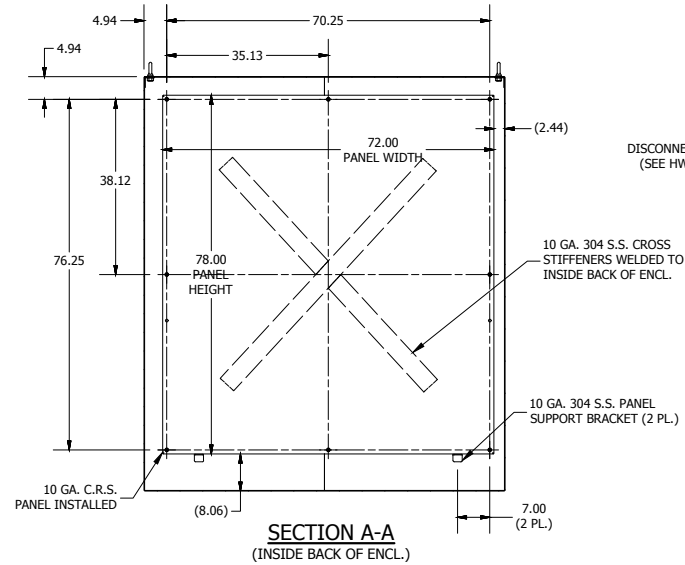
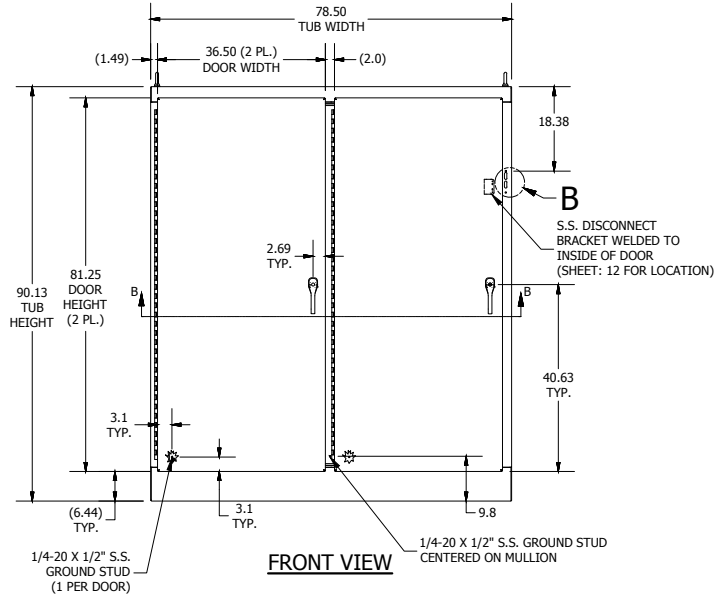
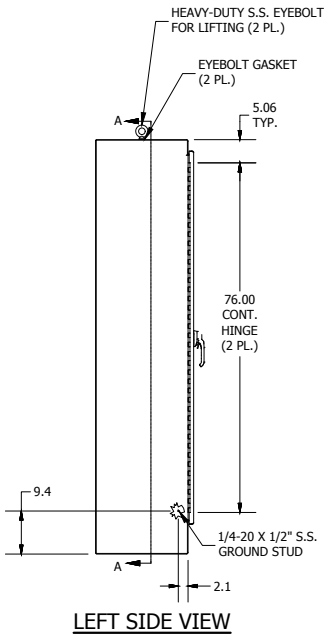
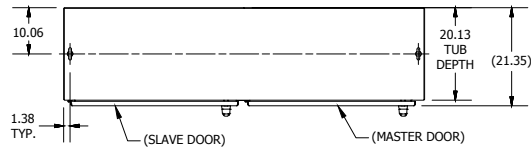


REVISION HISTORY			
REV	DESCRIPTION	BY	DATE
A	ECO# 20160606-1L	WF	05/09/2017

- NOTES:
1. ALL DIMENSIONS ARE FROM OUTSIDE UNLESS OTHERWISE NOTED (1/5).
  2. ENCLOSURE IS FABRICATED FROM 10 GA. 304 STAINLESS STEEL.
  3. ALL SEAMS ARE CONTINUOUSLY WELDED & GROUND SMOOTH.
  4. DOORS ARE SEALED WITH FOAM-IN-PLACE GASKET.
  5. RIGHT DOOR (MASTER) IS SECURED SHUT WITH A 3-POINT 316 S.S. PADLOCKABLE HANDLE WITH BUILT IN DEFEATER.
  6. LEFT DOOR (SLAVE) IS SECURED SHUT WITH A 3-POINT 316 S.S. PADLOCKABLE HANDLE WITHOUT DEFEATER.
  7. A 10 GA. CARBON STEEL BACK PANEL IS INSTALLED PER DRAWING.
  8. FINISH: EXTERIOR - STANDARD GRAINED FINISH.  
INTERIOR - STANDARD COMMERCIAL FINISH.  
PANEL - WHITE POLYESTER POWDER (SMOOTH).
  9. ENCLOSURE IS RATED UL TYPE 4X.



PART#: WA90XM7720SSN4  
(DATA SUBJECT TO CHANGE WITHOUT NOTICE)

THIS DRAWING IS PROPERTY OF HUBBELL INC. WIEGMANN  
ALL INFORMATION IS PROPRIETARY AND NOT TO BE DUPLICATED