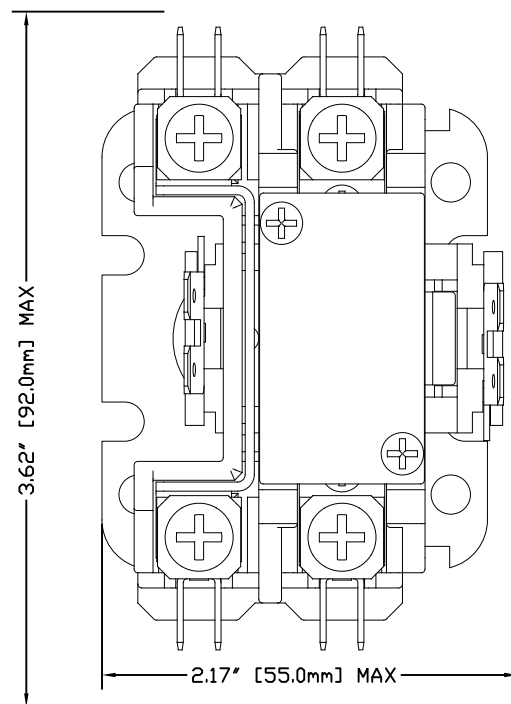
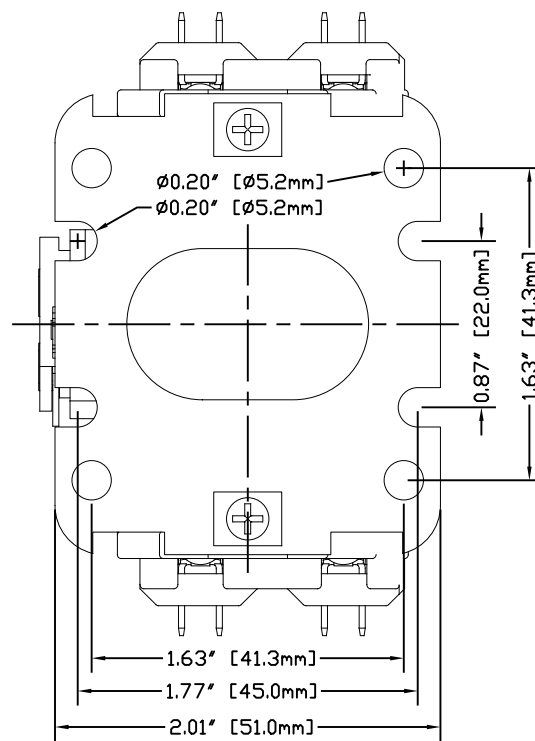
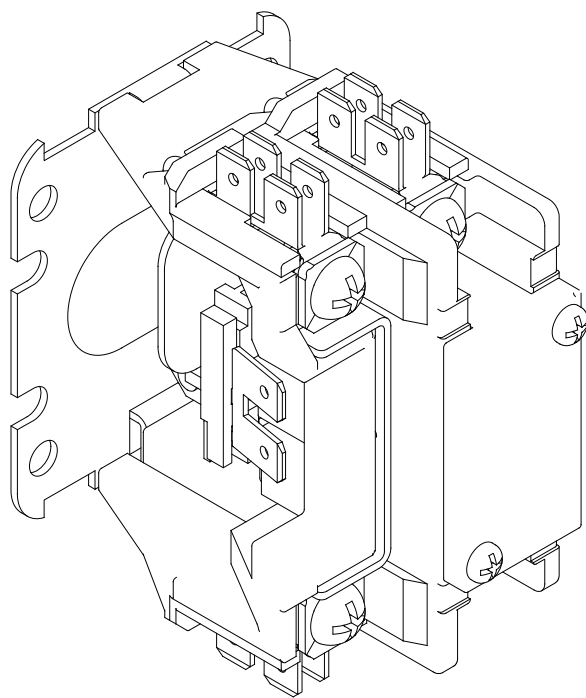


LH SIDE DETAIL



FRONT DETAIL



BASE DETAIL

# **1 POLE DP CONTACTORS, 20-40A**

WDP20-1L-#, FLA = 20A

WDP25-1L-#, FLA = 25A

WDP32-1L-#, FLA = 32A

WDP40-1L-#, FLA = 40A

#=COIL VOLTAGE

# **COIL DATA:**

COILS 24V-600V 50/60Hz

55VA INRUSH, 13VA SEAL

(85-100%) Vs OPERATE

(20-65%) Vs DROPOUT

MAIN CIRCUIT: #14-10 Cu-Wire (WDP20/25)

MAIN CIRCUIT: #14-8 Cu-Wire (WDP30/32/40)

TIGHTENING TORQUE: 20 LB-IN



**WorldWide Electric Corporation**

3540 WINTON PLACE  
ROCHESTER, NEW YORK 14623 USA  
TOLL FREE: 1-800-808-2131

DRAWING SERIES / PARTS:  
WDP20-40(1P)  
BOXLUG DP CONTACTORS  
MECHANICAL DETAILS, 20 - 40A

ENGINEER	JSW	CREATED	20 FEB 16
DRAWN BY	JSW	SCALE	DWG 2:1
CHECKED BY	JSW	SHEET	1 OF 1
DWG NO			

NO.	DATE