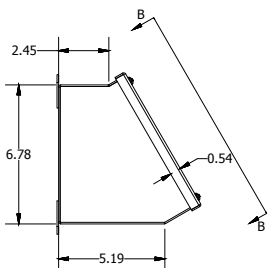
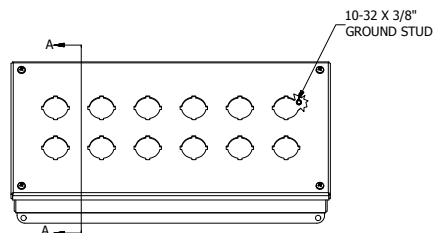


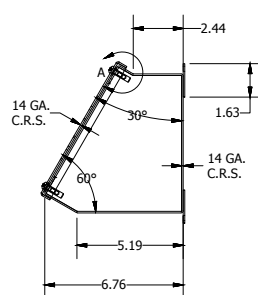
VIEW B-B
(LID ASSM. REMOVED)



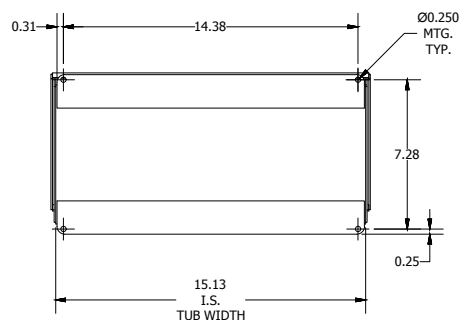
LEFT SIDE VIEW



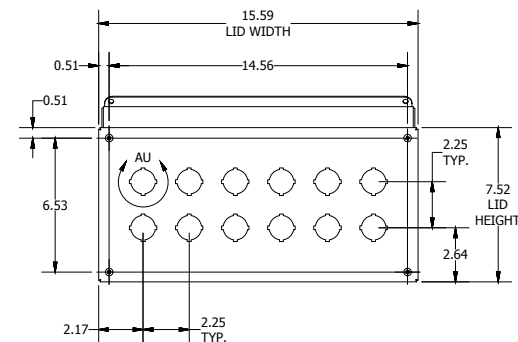
FRONT VIEW



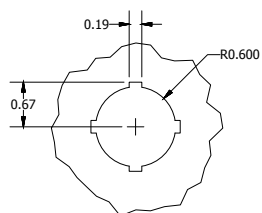
SECTION A-A
(INSIDE LEFT OF ENCL.)



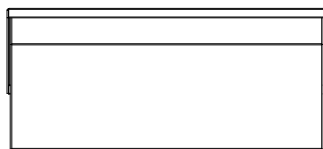
BACK VIEW



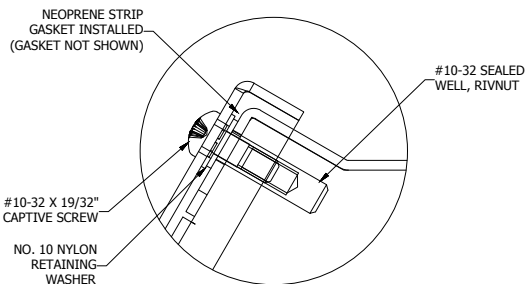
SECTION B-B
(STRAIGHT AHEAD VIEW OF LID)



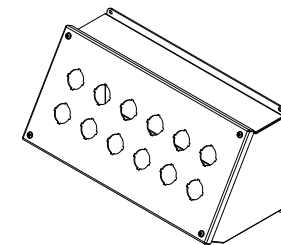
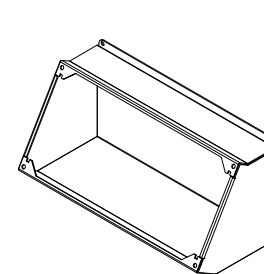
DETAIL AU
(TYP. PUSH BUTTON)



REAR VIEW



DETAIL A (4 PL.)
(LID ATTACHMENT DETAIL)



PART#: WPBA12
(DATA SUBJECT TO CHANGE WITHOUT NOTICE)

THIS DRAWING IS PROPERTY OF HUBBELL INC. WIEGMANN
ALL INFORMATION IS PROPRIETARY AND NOT TO BE DUPLICATED