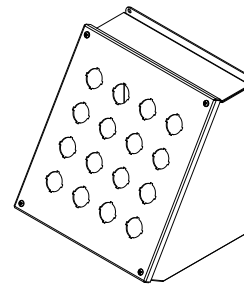
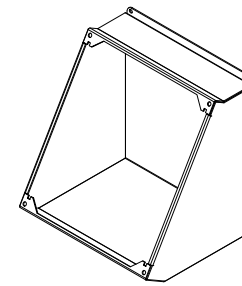
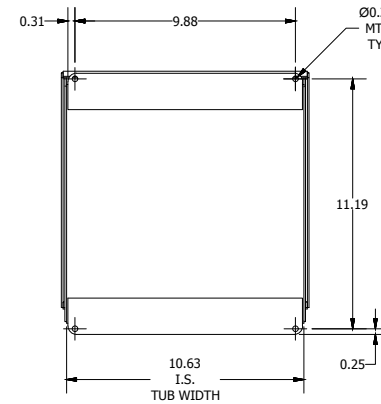
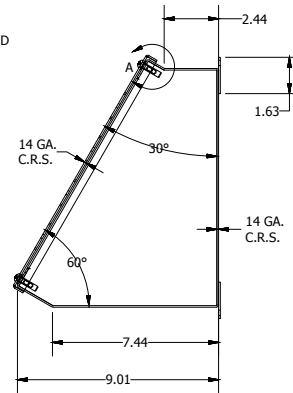
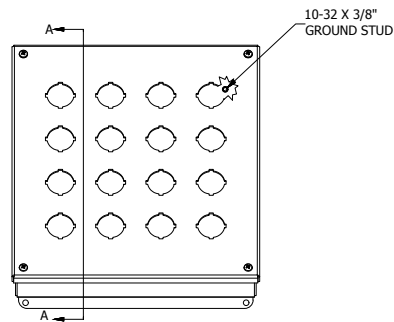


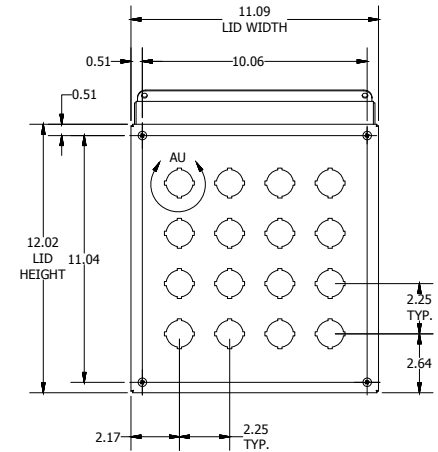
**DETAIL A (4 PL.)**  
(LID ATTACHMENT DEATIL)



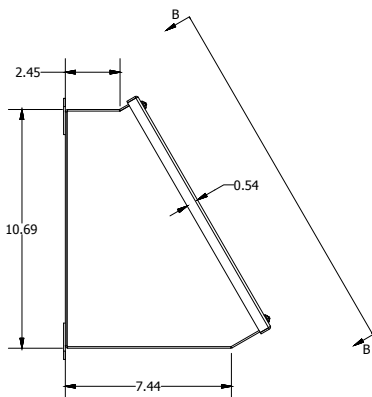
**VIEW B-B**  
(LID ASSM. REMOVED)



**BACK VIEW**

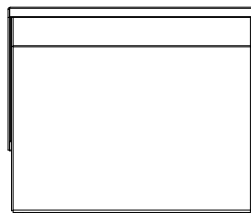


**SECTION B-B**  
(STRAIGHT AHEAD VIEW OF LID)

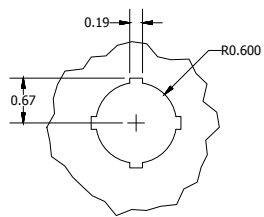


**LEFT SIDE VIEW**

**FRONT VIEW**



**REAR VIEW**



**DETAIL AU**  
(TYP. PUSH BUTTON)

PART#: WPBA16S  
(DATA SUBJECT TO CHANGE WITHOUT NOTICE)

THIS DRAWING IS PROPERTY OF HUBBELL INC. WIEGMANN  
ALL INFORMATION IS PROPRIETARY AND NOT TO BE DUPLICATED