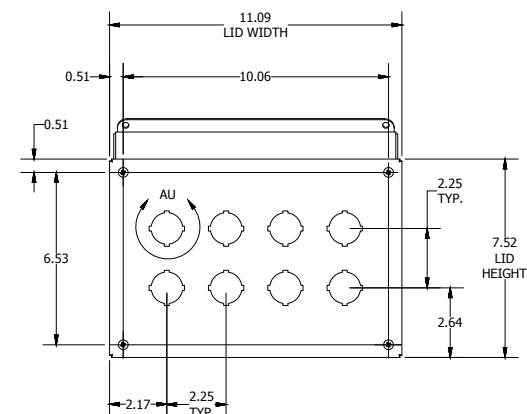
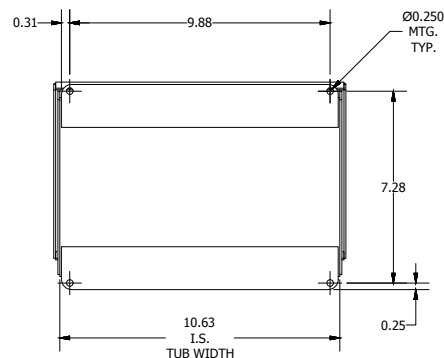
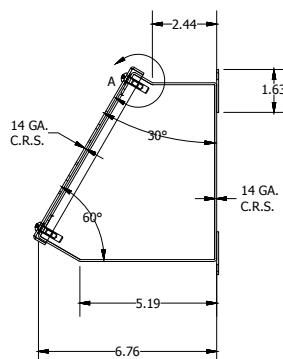
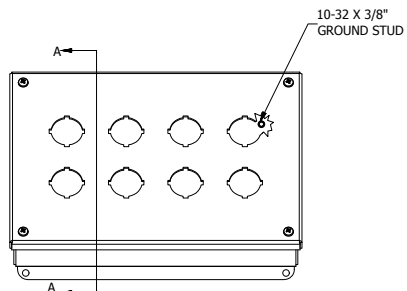
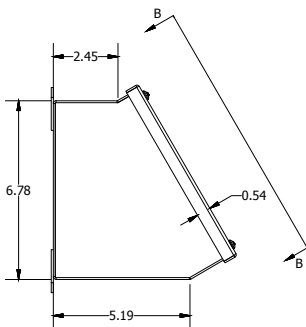


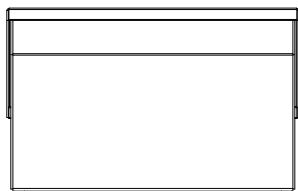
**VIEW B-B  
 (LID ASSM. REMOVED)**



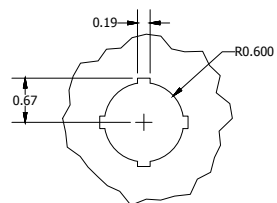
**LEFT SIDE VIEW**



**FRONT VIEW**



**REAR VIEW**



PART#: WPBA8  
 (DATA SUBJECT TO CHANGE WITHOUT NOTICE)

THIS DRAWING IS PROPERTY OF HUBBELL INC. WIEGMANN  
 ALL INFORMATION IS PROPRIETARY AND NOT TO BE DUPLICATED