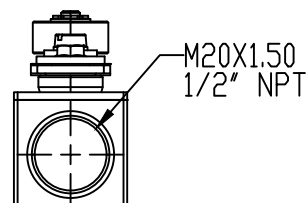


ISOMETRIC VIEW



M20X1.50
1/2" NPT

NOTES:

1. DIMENSIONS CAN BE CHANGED BY MANUFACTURER WITHOUT NOTICE.
2. DIMENSIONS DO NOT IMPLY TOLERANCE.

ZV7H-235-02Z

Units: mm [inches]
Scale: Full

SCHMERSAL LIMIT SWITCH, SIDE ROTARY ADJ.
LEVER W/PLASTIC ROLLER, 90° ADJ. HEAD,
(2)N.C. CONTACTS, SNAP ACTION, 30MM
WIDE BODY, ZINC ALLOY, 20-22MM MOUNT,
M20X1.50 ENTRY W/1/2" NPT ADAPTER

AUTOMATIONDIRECT.com