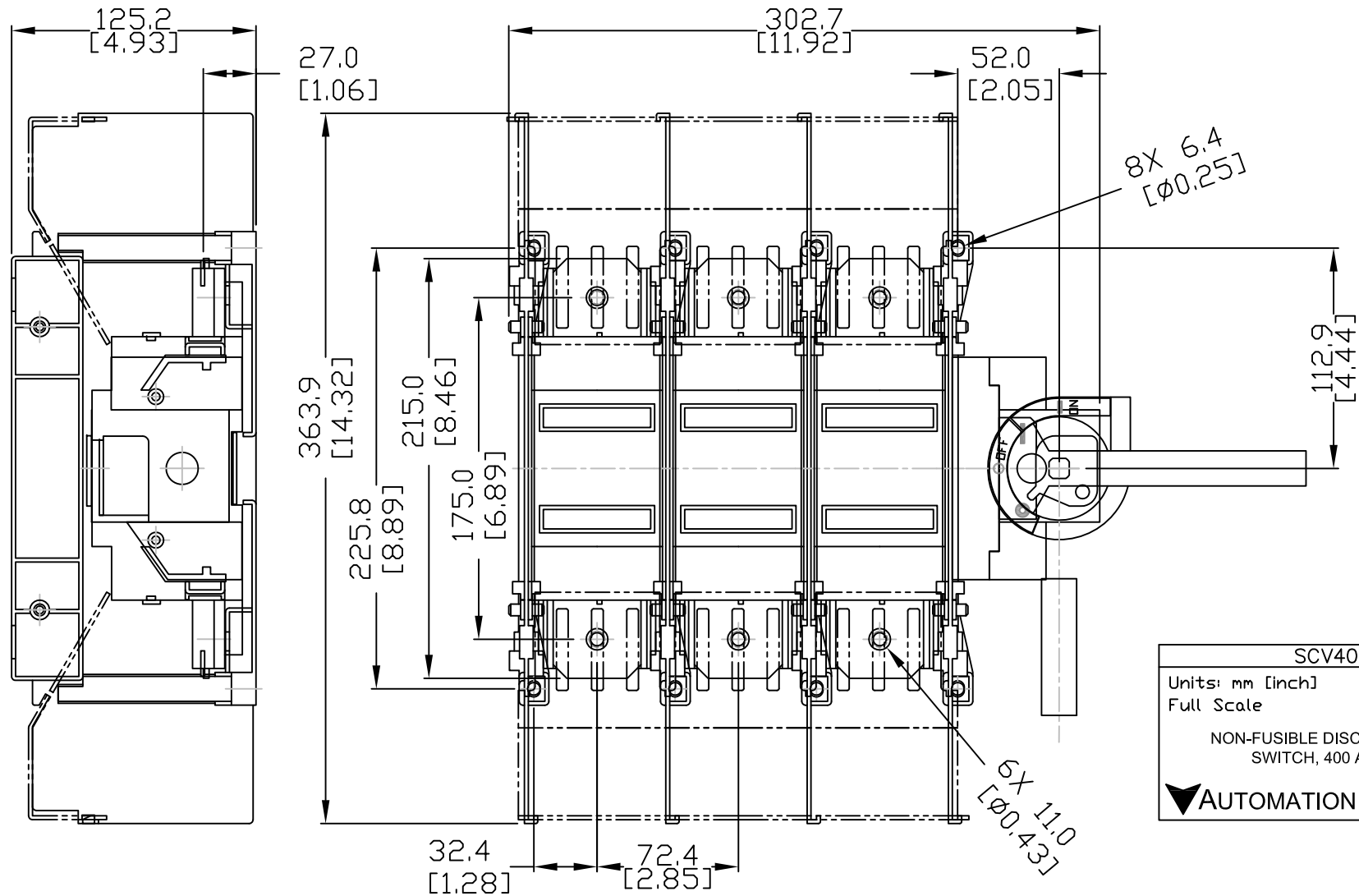
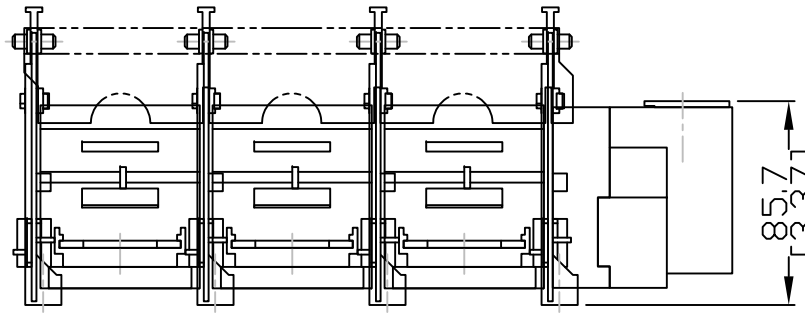


Technical drawing of a circular part. The drawing shows a central circle with a diameter of  $\phi 31.0$  and a tolerance of  $[ \phi 1.22 ]$ . There are four smaller circles, each with a diameter of  $\phi 0.18$  and a tolerance of  $[ \phi 0.18 ]$ , arranged in a square pattern around the central circle. The distance between the centers of the four small circles is  $50.0$  with a tolerance of  $[ 1.97 ]$ . The distance from the center of the central circle to the center of one of the small circles is  $50.0$  with a tolerance of  $[ 1.97 ]$ .



AUTOMATIONDIRECT.com