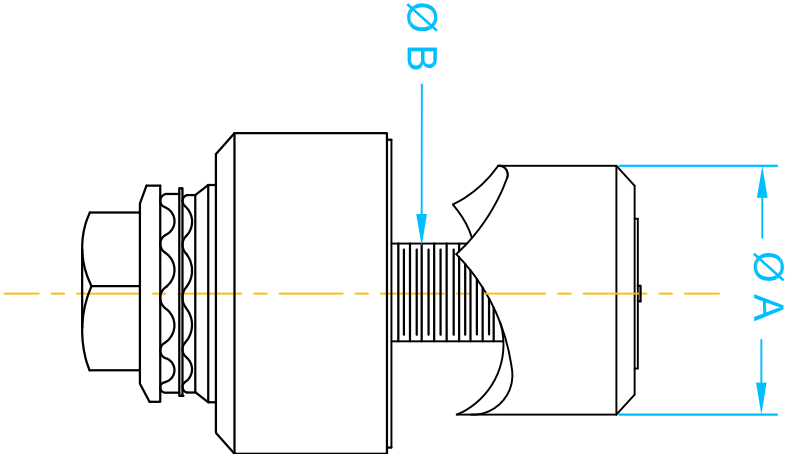


Knockout Punch Tools

PART #	PRICES/ PKG.	DESCRIPTION	ACTUAL HOLE SIZE (ØA)	DRAW BOLT SIZE (ØB)	TRADE HOLE SIZE	WORKS WITH
109220	1	KNOCKOUT PUNCH HOLE CUTTING	22.0 mm	M10	22 mm	101703, 103110K
109225	1		22.5 mm	M10	22.5 mm	101703, 103110K
109300	1		30.0 mm	M12	30 mm	101703, 103112K
109305	1		30.5 mm	M12	30.5 mm	101703, 103112K
1097012	1		0.875 inch	M8	1/2 inch	101703, RA-16G, RA-16K, CUR-16G, CUR-16K
1097034	1	TDOL	1.115 inch	M10	3/4 inch	101703, 103110K RA-20G, RA-20K, CUR-20G, CUR-20K
1097010	1		1.362 inch	M10	1 inch	101703, 103110K, RA-25G, RA-25K, CUR-25G, CUR-25K
1097114	1		1.6875 inch	M12	1 1/4 inch	101703, 103112K, RA-32G, RA-32K, CUR-32G, CUR-32K
1097112	1		1.9375 inch	M12	1 1/2 inch	101703, 103112K
1097020	1		2.375 inch	M16	2 inch	101703, 103116K
REPLACEMENT DRAW BOLTS						
103110K	1	M10 replacement bolt with ball-bearing bushing	22 mm	3/4 to 1 inch		109220, 109225, 1097034, 1097010
103112K	1	M12 replacement bolt with ball-bearing bushing	30 mm	1 1/4 to 1 1/2 inch		1097114, 1097112, 109300, 109305
103116K	1	M16 replacement bolt with ball-bearing bushing	2 inch			1097020

NOTE: Part number 109225 is recommended when punching holes for 22mm pilot devices  
Part number 109305 is recommended when punching holes for 30mm pilot devices



HOLE PUNCH RECOMMENDATIONS

DRAW-IN BOLT	SHEET STEEL	STAINLESS STEEL SHEETS	NON-FERROUS LIGHT METALS	PLASTICS
M8 x 1.0 mm	14 Ga, 2mm	18 Ga, 1 mm	8 Ga, 4 mm	8 Ga, 4 mm
M10 x 1.0 mm	14 Ga, 2 mm	18 Ga, 1 mm	8 Ga, 4 mm	8 Ga, 4 mm
M12 x 1.5 mm	11 Ga, 3 mm	14 Ga, 2 mm	8 Ga, 4 mm	8 Ga, 4 mm
M16 x 1.5 mm	11 Ga, 3 mm	14 Ga, 2 mm	8 Ga, 4 mm	8 Ga, 4 mm

PUNCH HOLE

Units: inches [mm]

Scale: not to scale

Knockout Punch Tools